

iBoard®

iBoard® by APS

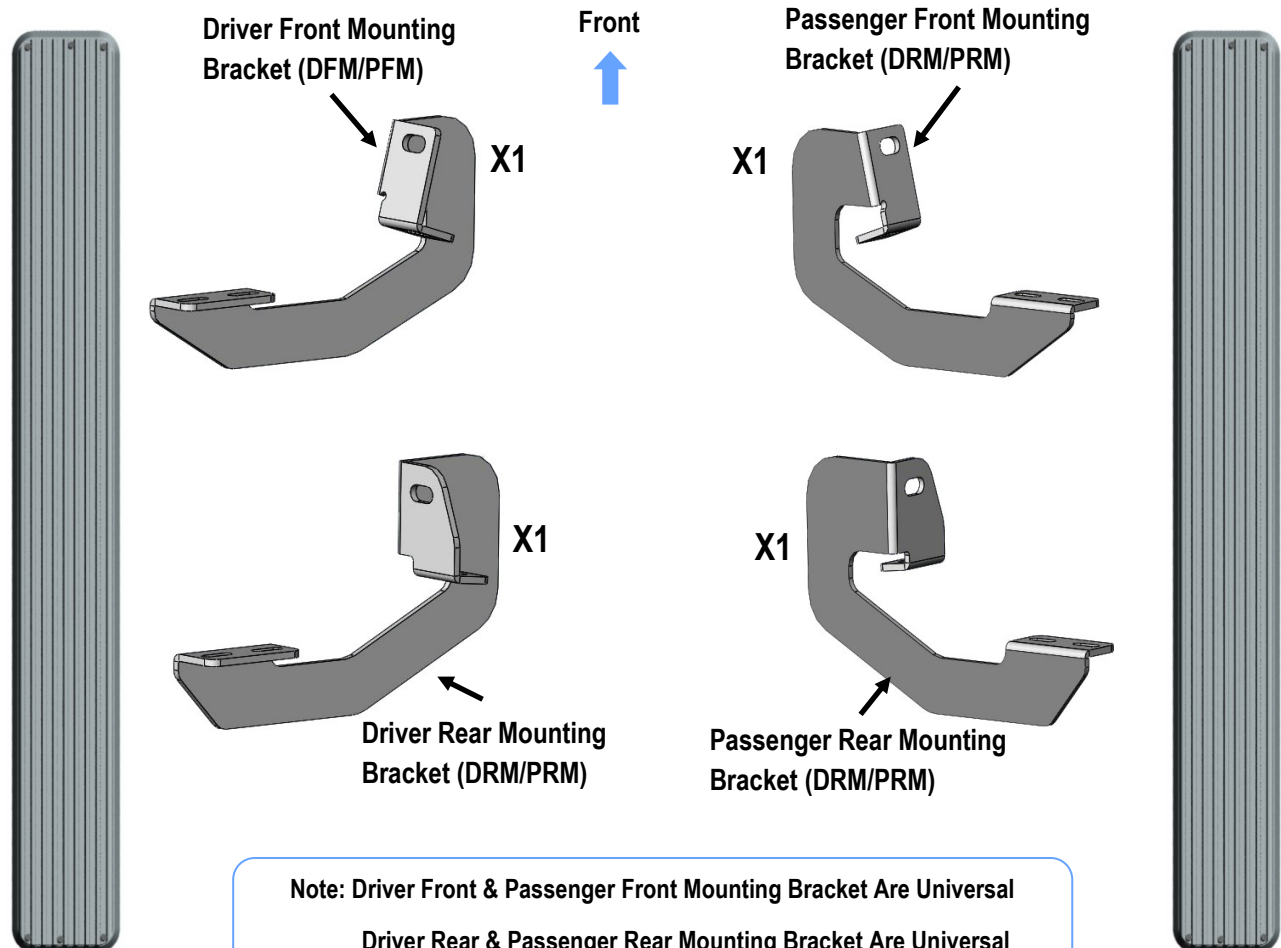
PART#: IB-009A-B

**READ INSTRUCTIONS CAREFULLY BEFORE
STARTING INSTALLATION. REMOVE CONTENTS
FROM BOX AND VERIFY ALL PARTS ARE PRE-
SENT. ASSISTANCE IS RECOMMENDED.**

***ROCKER PANEL MOUNT
*NO DRILLING REQUIRED**

Fastener Size	Tightening Torque (ft-lbs)
6mm	6-7
8mm	16-18
10mm	31-32
12mm	56-58
14mm	92-94

PART LIST



Customer Support: info@iboardauto.com

iBoard®



M8X1.25-30mm
Hex Bolt



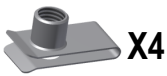
M8 Large Flat Washer



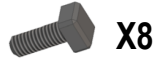
M8 Lock Washer



M8X1.25 Hex Nut



M8 Clip Nut



M6X1-20mm
Square Head Bolt



M6 Large Flat Washer

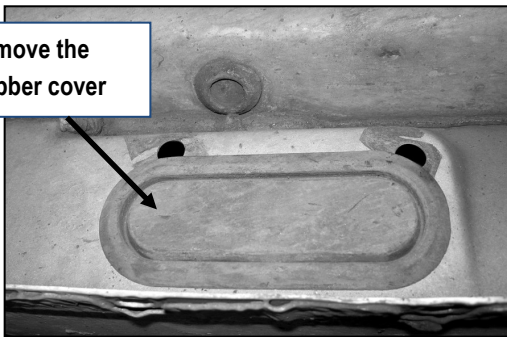


M6X1 Nylon
Lock Nut

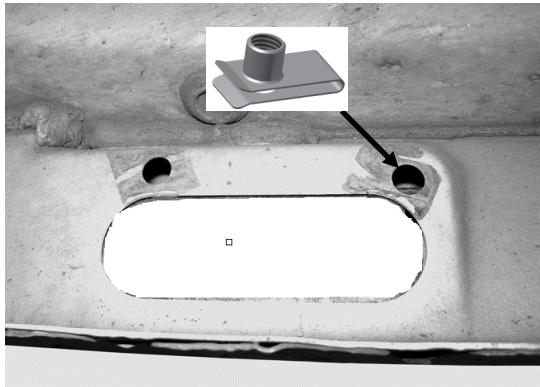
STEP 1

Start installation under the Driver Side Front Mounting Location. Remove the large oval rubber cover located on the inner side panel toward the front, **(Fig1)**. Insert (1) M8 Clip Nut into the round hole **(Fig 2)**. **NOTE:** Threaded nut must go towards the inside of the side panel,

Remove the
Rubber cover



(Fig 1) Driver Side Front Mounting Location



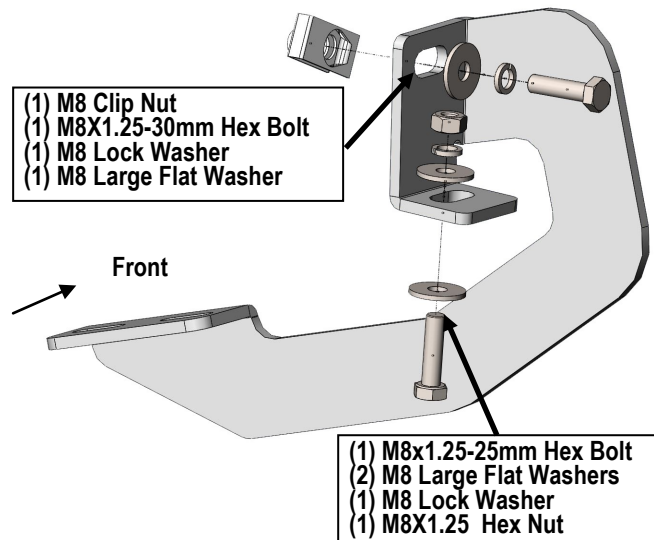
(Fig 2) Insert M8 Clip Nut into the Round Hole

STEP 2

Select (1) Driver Front Mounting Bracket **(DFM/PFM)**. Attach the Bracket to the installed M8 Clip Nut with the included (1) M8X1.25-30mm Hex Bolt, (1) M8 Lock Washer and (1) M8 Large Flat Washer, **(Fig 3)**.

Align the bottom holes in the front Bracket with the (1) hole in the pinch weld. Bolt the Bracket to the pinch weld using the included (1) M8X1.25-30mm Hex Bolt, (2) M8 Large Flat Washers, (1) M8X1.25 Lock Washer and (1) M8 Hex Nut, **(Fig 3)**.

NOTE: Insert the bolt up from the bottom of the pinch weld and through the Bracket.



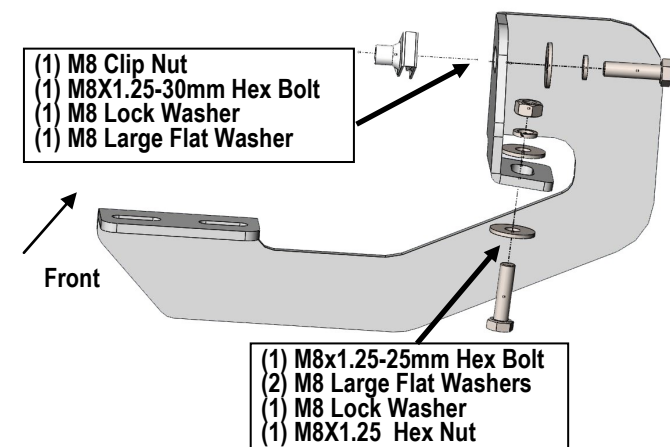
(Fig 3) Driver Front Mounting Bracket (DFM/PFM) Installed

iBoard®

STEP 3

Next, move along the vehicle to the Driver Side Rear Mounting Location, select a Driver Rear Mounting Bracket (**DRM/PRM**), repeat **Steps 1-2** to install the rear bracket.

Do not fully tighten hardware at this time.



(Fig 4) Driver Rear Mounting Bracket Installed

STEP 4

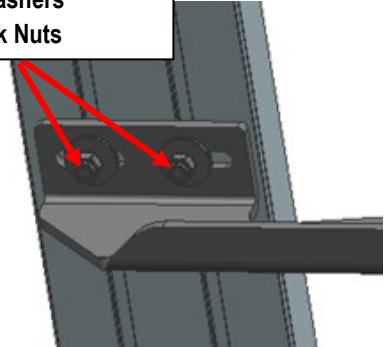
Select a Running Board. Slip (2) M6x1-20mm Square Head Bolts into each bottom channel (**Fig 5**). Carefully position the Running Board onto the (2) Mounting Brackets.

IMPORTANT: Do not slide the Running Board on the Brackets or the bottom surface of the board will be damaged. Attach the Running Board to each Mounting Brackets with (2) M6x1-20mm Square Head Bolts, (2) M6 Large Flat Washers and (2) M6 X1 Nylon Lock Nuts (**Fig 6**). Do not fully tighten at this time.



(Fig 5) Slip M6X1-20mm Square Head Bolts Into The Bottom Channels

- (2)M6X1-20mm Square Head Bolts
- (2)M6 Large Flat Washers
- (2)M6X1 Nylon Lock Nuts



(Fig 6) Running Board Installed onto Mounting Bracket

STEP 5

Level and adjust the Running Board as necessary and fully tighten all hardware.

STEP 6

Repeat **Steps 1-5** for the other side Running Board installation. The installation is completed (**Fig 7**).



(Fig 7) Installation Completed

Attention

Do periodic inspections to the installation to make sure that all hardware is secure and tight.

In order to protect your bars/boards, please use only mild soap/non-abrasive products for cleaning.