

# iBoard®

## iBoard® by APS

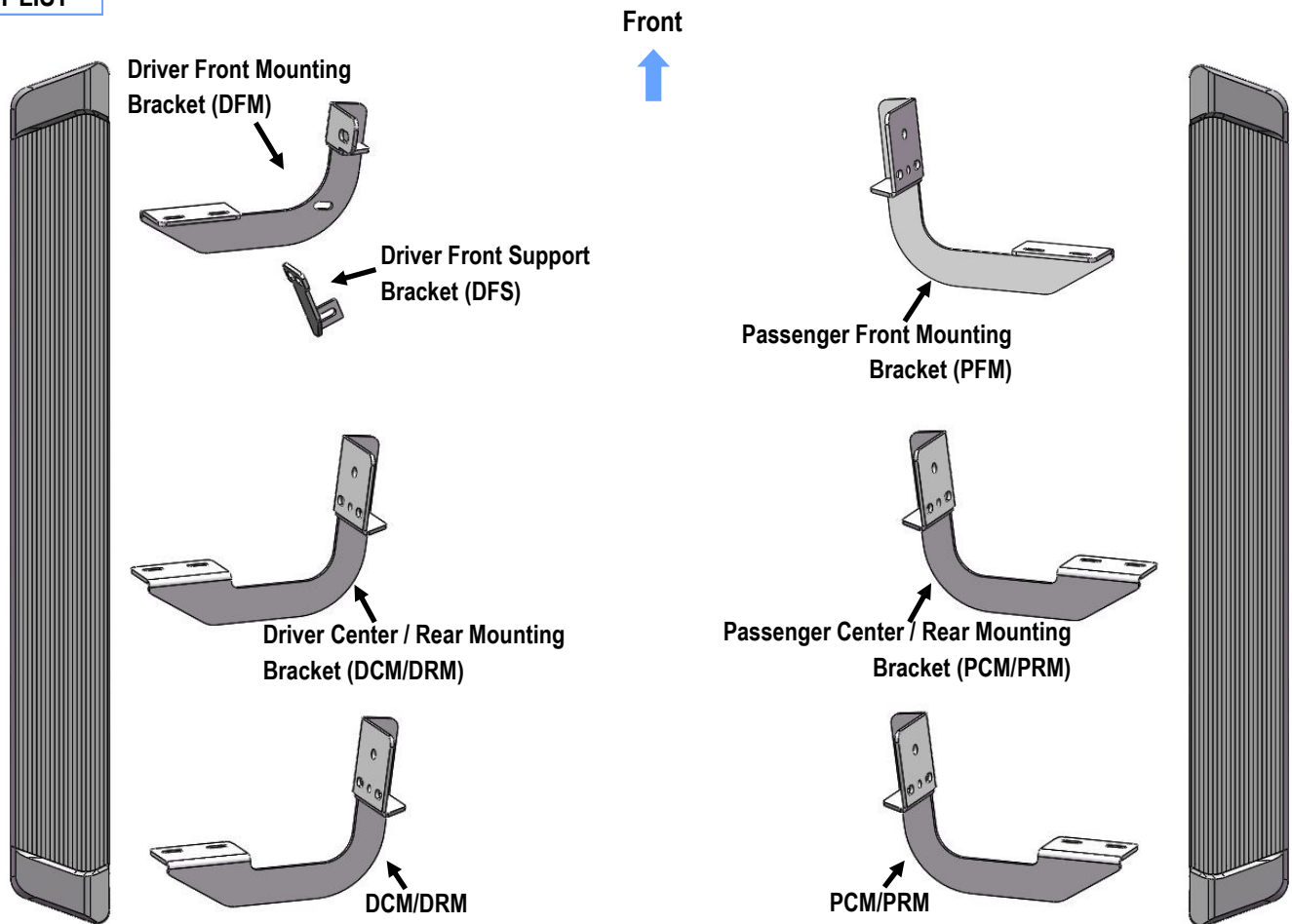
PART#: IB-R179&R208&R209A\_B

**READ INSTRUCTIONS CAREFULLY BEFORE STARTING INSTALLATION. REMOVE CONTENTS FROM BOX AND VERIFY ALL PARTS ARE PRESENT. ASSISTANCE IS RECOMMENDED.**

**\*ROCKER PANEL MOUNT  
\*DRILLING MAYBE REQUIRED**

Fastener Size	Tightening Torque (ft-lbs)
6mm	6-7
8mm	16-18
10mm	31-32
12mm	56-58
14mm	92-94

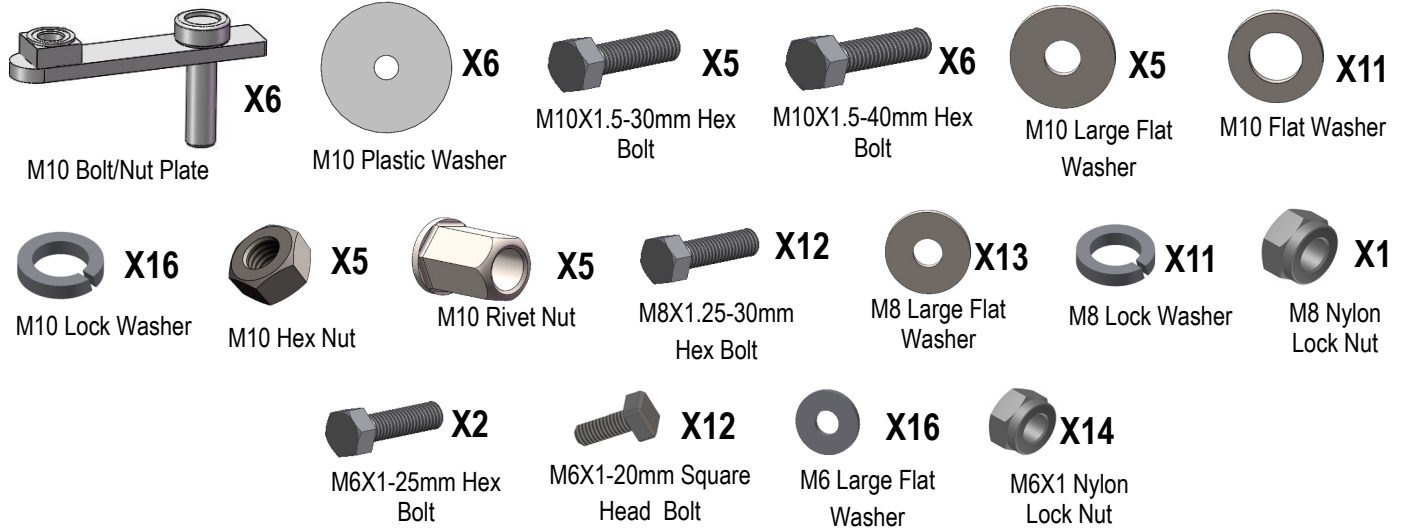
### PART LIST



**Note: \*Driver Center & Rear Mounting Bracket are universal.  
\*Passenger Center & Rear Mounting Bracket are universal.**

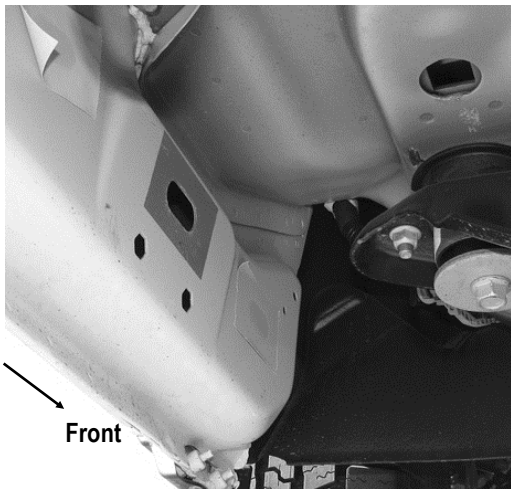
Customer Support: [info@iboardauto.com](mailto:info@iboardauto.com)

# iBoard®

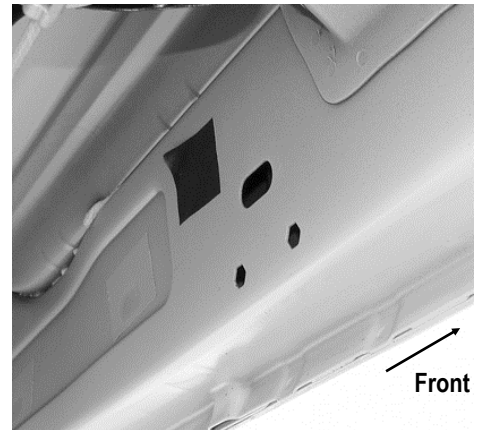


## STEP 1

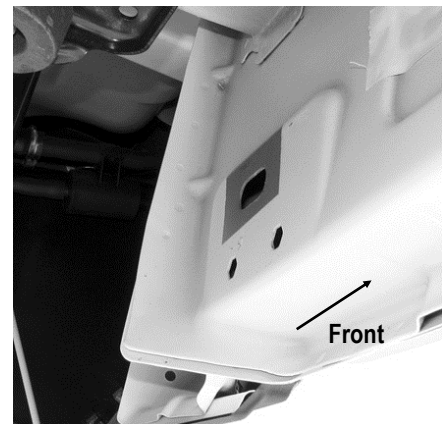
Start installation on the driver side of the vehicle. If equipped, remove the sealing tapes covering the factory oval holes on the inner side of the body panel, (**Fig 1A & 1B & 1C**).



(Fig 1A) Driver Side Front Mounting Location



(Fig 1B) Driver Side Center Mounting Location



(Fig 1C) Driver Side Rear Mounting Location

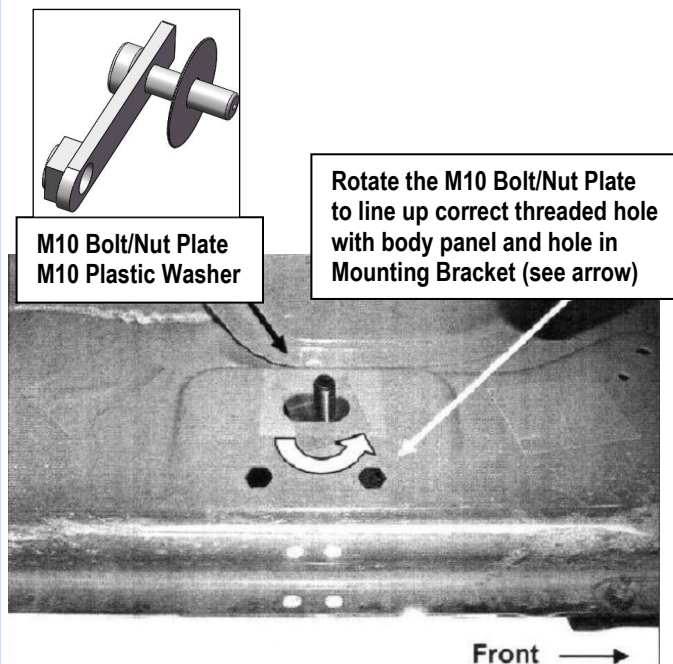
# iBoard®

## STEP 2

Determine the correct procedure to attach (1) Driver Front Mounting Bracket for your model/year:

### Models without factory threaded inserts in body panel:

- Insert the M10 Bolt/Nut Plate into the factory oval hole. And then Thread down the M10 Plastic Washer onto the M10 bolt until it is flush against the sheet metal to prevent the M10 Bolt/Nut Plate from falling down into the oval hole, (Fig 2).
- Attach the Driver Front Mounting Bracket to the inner panel and rotate the M10 Bolt/Nut Plate until the welded nut end lines up with the hole on the Mounting Bracket. Secure with (1) M10x1.5-40mm Hex Bolt, (1) M10 Lock Washer and (1) M10 Flat Washer, (Fig 6). Keep them snug but do not tighten hardware at this time.

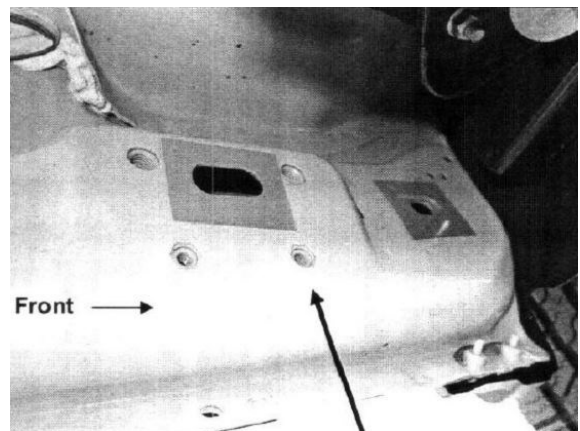


(Fig 2) M10 Bolt/Nut Plate Installed  
(on Driver Side Front Mounting Location)

## STEP 3

### Models with factory threaded inserts, (Fig 3):

Attach the Driver Front Mounting Bracket (DFM) onto the threaded insert with (1) M8X1.25-30mm Hex Bolt, (1) M8 Lock Washer, (1) M8 Large Flat Washer, (Fig 6). Do not fully tighten at this time.



(Fig 3) Driver Side Front Mounting Location mid 15-on (Example of models with factory installed threaded inserts)

## STEP 4

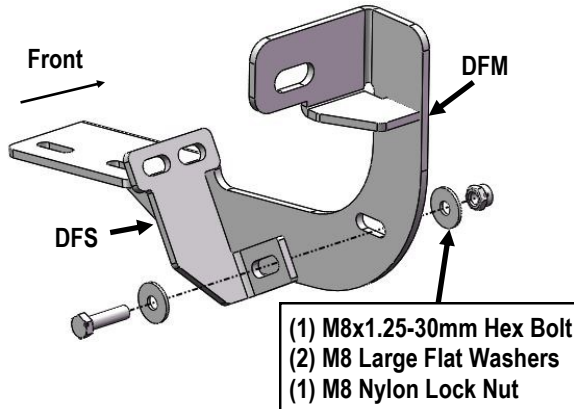
Attach the Driver Front Support Bracket (DFS) to the back side of the Front Mounting Bracket (DFM) with (1) M8X1.25-30mm Hex Bolt, (2) M8 Large Flat Washers and (1) M8 Nylon Lock Nut, (Fig 4).

Rotate the Support Bracket (DFS) to the back of the pinch weld. Attach the Support Bracket to the pinch weld with (2) M6X1-25mm Hex Bolts, (4) M6 Large Flat Washers, (2) M6 Nylon Lock Nuts. (Figs 5 & 6). Do not Fully tighten at this time.

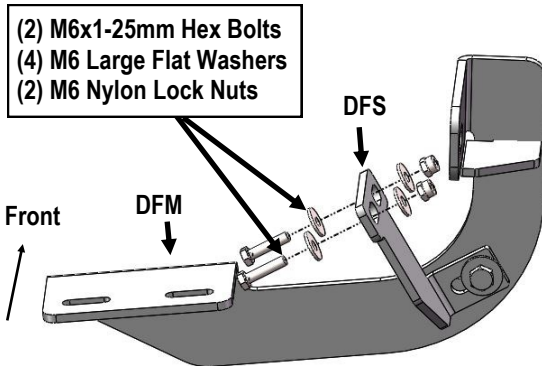
**Important: Some models are not equipped with factory holes and will require drilling through the pinch weld to attach the Support Bracket. Do not drill through pinch weld at this time. (Refer to Step 9)**

# iBoard®

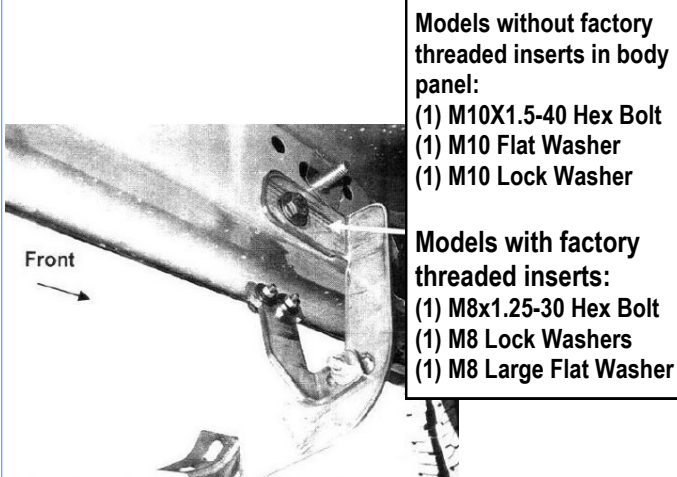
## STEP 5



(Fig 4) Driver Front Mounting Bracket Assembly



(Fig 5) Driver Front Support Bracket Installed



(Fig 6) Driver Front Mounting Bracket Installed

Move to the driver side Center Mounting Location:

### Models without factory threaded inserts on body panel:

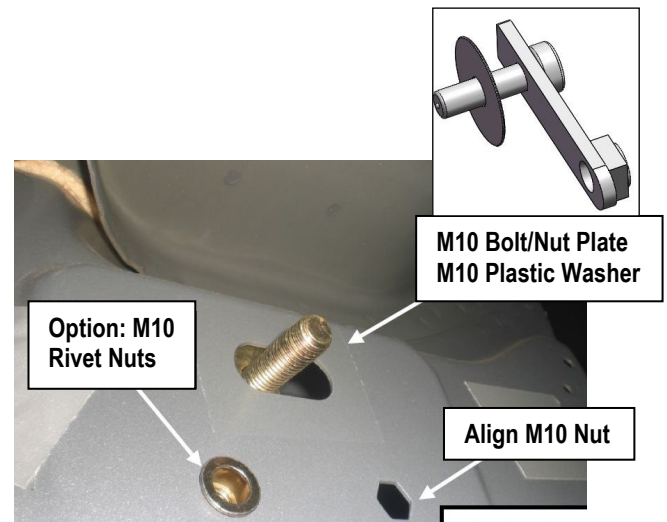
Select (1) M10 Bolt/Nut Plate, repeat **Step 2** to install the M10 Bolt/Nut Plate into the oval hole (**Fig 7**).

Insert (1) M10 Rivet Nut into the hole on rocker panel, and attach the Center Bracket onto the installed M10 Bolt/Nut Plate temporarily with (1) M10X1.5 Hex Nut, (1) M10 Large Flat Washer, (1) M10 Lock Washer. And use the mounting bracket as a tool to secure the M10 Rivet Nut onto the rocker panel with (1) M10X1.5-30mm Hex Bolt, (1) M10 Large Flat Washer and (1) M10 Lock Washer, (**Fig 8**). After the M10 rivet nut installed, remove the M10 hardware from the center hole of the mounting bracket, (**Fig 8**).

And then Attach the Driver Center Mounting Bracket on the installed M10 Rivet Nut and M10 Bolt Nut/Plate, (**Fig 9**).

### Models with factory threaded inserts, (Fig 3):

Attach the Driver Centre Mounting Bracket (**DCM/DRM**) onto the factory threaded insert with (2) M8X1.25-30mm Hex Bolt, (2) M8 Lock Washer, (2) M8 Large Flat Washer (**Fig 9**). Do not fully tighten hardware at this time.



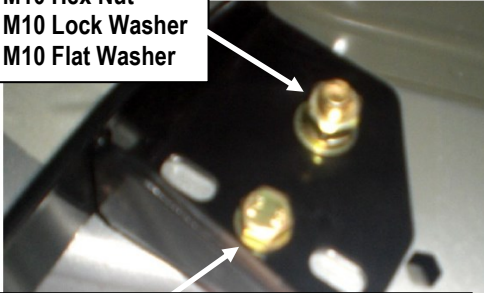
(Fig 7) Insert the M10 Bolt/Nut Plate (Driver Center Side)



# iBoard®

## STEP 7

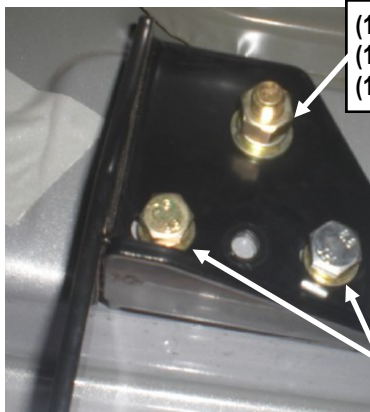
- (1) M10 Hex Nut
- (1) M10 Lock Washer
- (1) M10 Flat Washer



Use the Mounting Bracket as a tool to secure the M10 Rivet Nut onto the body panel with:

- (1) M10X1.5-30mm Hex Bolt
- (1) M10 Large Flat Washer
- (1) M10 Lock Washer

(Fig 8) M10 Rivet Insert Nut installation (example)



- (1) M10 Hex Nut
- (1) M10 Lock Washer
- (1) M10 Flat Washer

Models with Factory Threaded holes:

- (2) M8x1.25-30 Hex Bolts
- (2) M8 Lock Washers
- (2) M8 Large Flat Washers

Models w/o Factory Threaded Holes:

- (1) M10x1.5-30 Hex Bolt
- (1) M10X1.5-40 Hex Bolt
- (2) M10 Lock Washers
- (2) M10 Large Flat Washers

(Fig 9) Driver Center Mounting Bracket Installed

## STEP 6

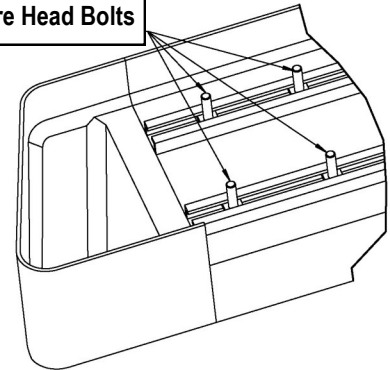
Move to the driver side rear of the vehicle, repeat **Step 5** for Driver Rear Mounting Bracket (DCM/DRM) installation.

**Note:** Driver Center & Rear Mounting Bracket are universal.

Select a Running Board. Slip (3) M6x1-20mm Square Head Bolts into each bottom channel (**Fig 10**). Carefully position the Running Board onto the (3) Mounting Brackets.

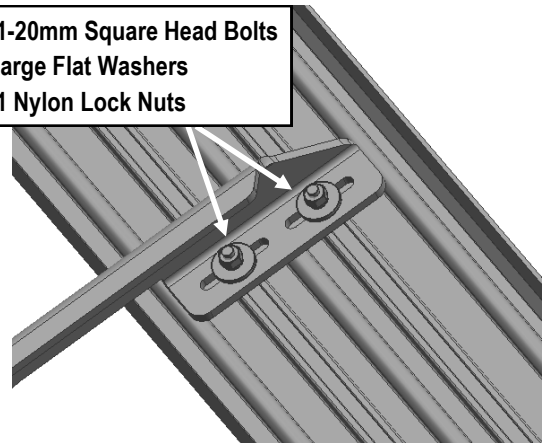
**IMPORTANT:** Do not slide the Running Board on the Brackets or the bottom surface of the board will be damaged. Attach the Running Board to each Mounting Bracket with (2) M6x1-20mm Square Head Bolts, (2) M6 Large Flat Washers and (2) M6 X1 Nylon Lock Nuts (**Fig 11**). Do not fully tighten at this time.

M6X1-20mm Square Head Bolts



(Fig 10) Slip M6X1-20mm Square Head Bolts Into The Bottom Channels

- (2) M6X1-20mm Square Head Bolts
- (2) M6 Large Flat Washers
- (2) M6X1 Nylon Lock Nuts



(Fig 11) Running Board Installed Onto Mounting Bracket

# iBoard®

## STEP 8

Level and adjust the Running Board and fully tighten all hardware.

**Important:** Please follow the recommended Tightening Torques shown in the table on page 1. Don't over tighten, or the nuts/bolts will be damaged.

## STEP 9

Some Models requiring **drilling** for Driver Front Support Bracket (DFS):

- Make sure the sidebar is level to the vehicle. Line up the slot on the Support Bracket with the back of the pinch weld. Mark the location of the slot onto the pinch weld.
- Drill (2)  $\frac{1}{4}$ " holes through the pinch weld. **Important:** Do not drill too close to the bottom edge of the pinch weld. Drill the holes toward the outside of the marked slot.
- Attach the Support Bracket to the pinch weld with (2) M6 X1-25mm Hex Bolts, (4) M6 Large Flat Washers, (2) M6 nylon Lock Nuts. (Fig 6).
- Check for level then fully tighten all hardware.

## STEP 10

Repeat **Steps 1-8** for the other side Running Board installation. The installation is completed (Fig 12).



(Fig 12) Installation Completed

### Attention

**Do periodic inspections to the installation to make sure that all hardware is secure and tight.**

**In order to protect your bars/boards, please use only mild soap/non-abrasive products for cleaning.**