

iBoard®

iBoard® by APS

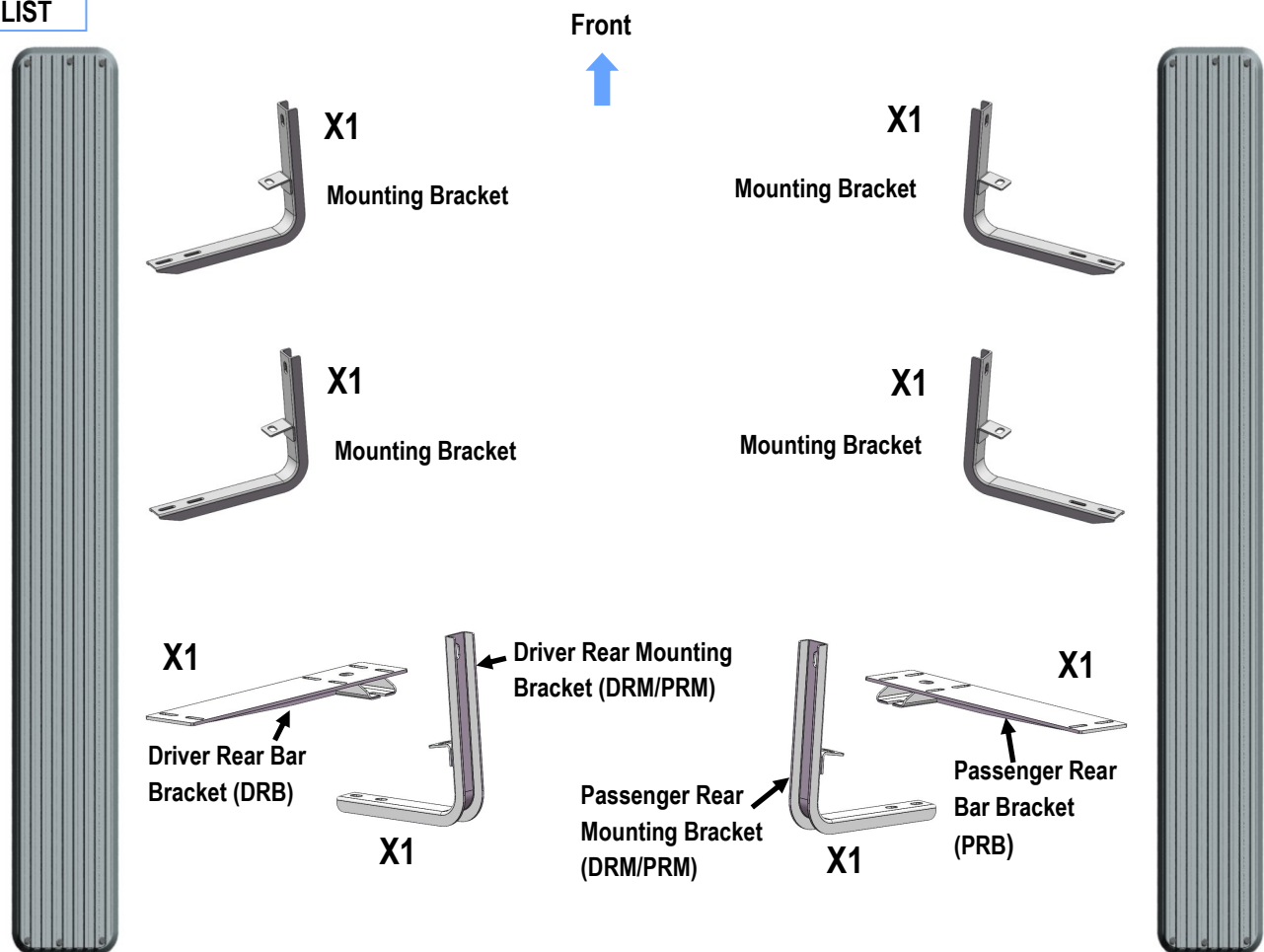
PART#: IB-295[L]-A_B

READ INSTRUCTIONS CAREFULLY BEFORE STARTING INSTALLATION. REMOVE CONTENTS FROM BOX AND VERIFY ALL PARTS ARE PRESENT. ASSISTANCE IS RECOMMENDED.

*ROCKER PANEL MOUNT
*No DRILLING REQUIRED

Fastener Size	Tightening Torque (ft-lbs)
6mm	6-7
8mm	16-18
10mm	31-32
12mm	56-58
14mm	92-94

PART LIST



Note: (4) Mounting Brackets are universal.
(2) Driver Rear Mounting Bracket and Passenger Rear Mounting Bracket are universal.

Customer Support: info@iboardauto.com

iBoard®



X4

M8X1.25-20mm
Inner Hex Bolt



X12

M8X1.25-30mm
Hex Bolt



X20

M8 Flat Washer



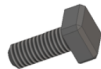
X12

M8 Lock Washer



X4

M8X1.25 Nylon
Lock Nut



X20

M6X1-20mm
Square Head Bolt



X20

M6 Large Flat
Washer



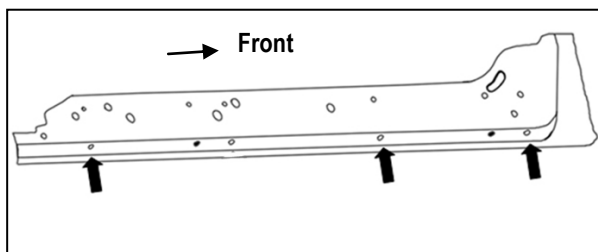
X20

M6X1 Nylon
Lock Nut

STEP 1

Start the installation from the driver side of the vehicle. Locate the 6 plugs along the bottom edge of the body. Mounting Brackets will bolt to the 1st, 3rd and 6th threaded mounting holes, **(Fig 1)**. Remove the plastic plugs from each mounting location. Directly above each threaded insert is a top mounting location on the side of the body panel. Hold a Bracket up in place to help determine the mounting holes to use along the body.

NOTE: Thread (1) 8mm Hex Bolt into the threaded inserts to clear paint as required.

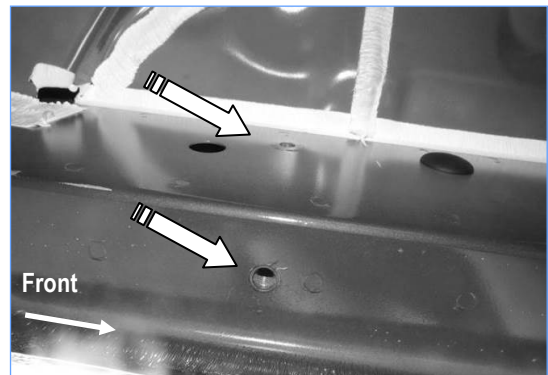


(Fig 1) Driver Side Mounting Locations

STEP 2

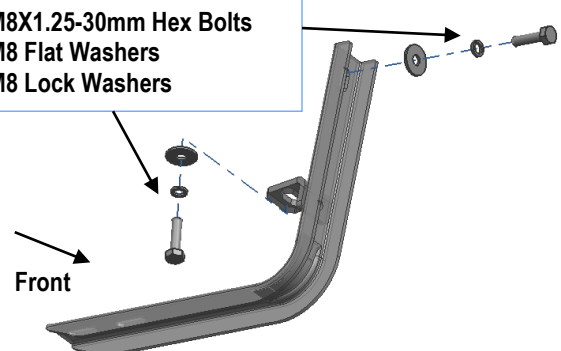
Start from the Driver side Front Mounting location, **(Fig 2)**. Bolt the Driver Front Mounting Bracket to the factory threaded holes

with (2) M8X1.25-30mm Hex Bolts, (2) M8 Flat Washers and (2) M8 Lock Washers **(Fig 3)**. Do not fully tighten hardware at this time.



(Fig 2) Driver Side Front Mounting Location

(2) M8X1.25-30mm Hex Bolts
(2) M8 Flat Washers
(2) M8 Lock Washers



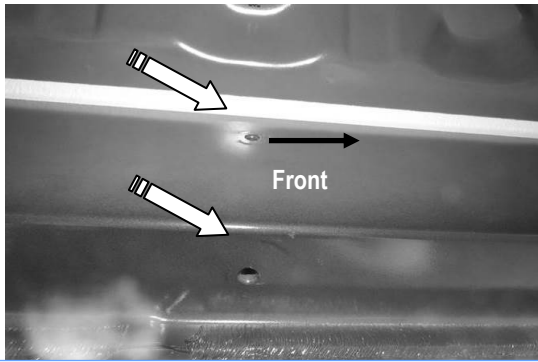
(Fig 3) Driver Front Mounting Bracket Installed

iBoard®

STEP 3

Move to Driver 3rd Mounting locations, (**Fig 4**). Repeat **Steps 1 -2** to install the Driver Center Mounting Bracket. Do not fully tighten hardware at this time.

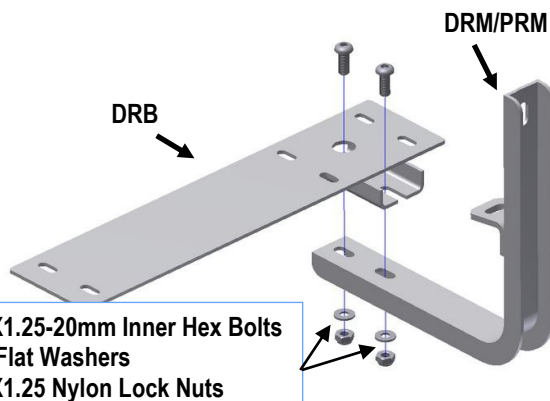
Note: Driver Front Mounting Bracket and Driver Center Mounting Bracket are universal.



(Fig 4) Driver 3rd Mounting Location

STEP 4

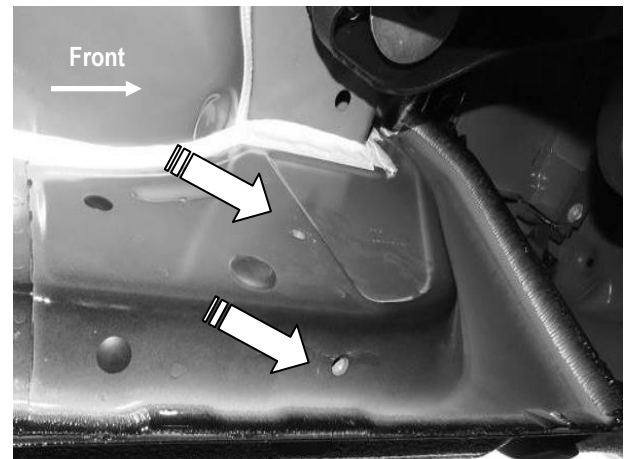
Assemble the Driver Rear Bar Bracket (**DRB**) and the Driver Rear Mounting Bracket (**DRM/PRM**) with (2) M8X1.25-20mm Inner Hex Bolts, (2) M8 Flat Washers, (2) M8X1.25 Nylon Lock Nuts. (**Fig 5**) Do not fully tighten hardware at this time.



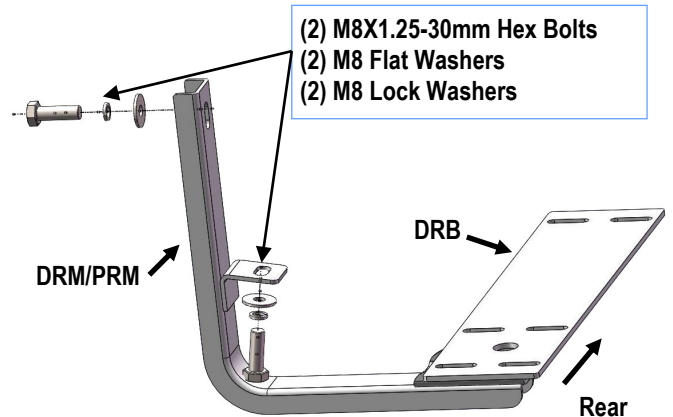
(Fig 5) Driver Rear Bar Bracket (DRB) and Driver Rear Mounting Bracket (DRM/PRM) Assembly

STEP 5

Move to Driver side Rear Mounting location, (**Fig 6**). Install the Assembled Driver Rear Mounting Bracket (**DRM/PRM**) with (2) M8X1.25-30mm Hex Bolts, (2) M8 Flat Washers and (2) M8 Lock Washers (**Fig 7**). Do not fully tighten hardware at this time.



(Fig 6) Driver Side Rear Mounting Location



(Fig 7) Driver Rear Mounting Bracket (DRM/PRM) Installed

iBoard®

STEP 6

Select a Running Board. Slip (5) M6X1-20mm Square Head Bolts into each bottom channel (**Fig 8**). Carefully position the Running Board onto the (3) Mounting Brackets. **IMPORTANT:** Do not slide (front to back) the Running Board on the Brackets or the bottom surface of the running board might be damaged.

Attach the Running Board to Front & Center Mounting Brackets with (2) M6X1-20mm Square Head Bolts, (2) M6 Large Flat Washers and (2) M6X1 Nylon Lock Nuts (**Fig 9**).

Attach the Running Board to Rear Bar Bracket with (6) M6X1-20mm Square Head Bolts, (6) M6 Large Flat Washers and (6) M6X1 Nylon Lock Nuts (**Fig 10**). Do not fully tighten hardware at this time.

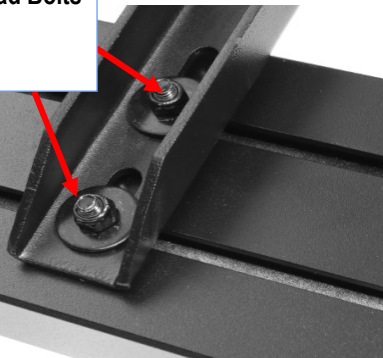
Next, level and adjust the Running Board as necessary and fully tighten all hardware.



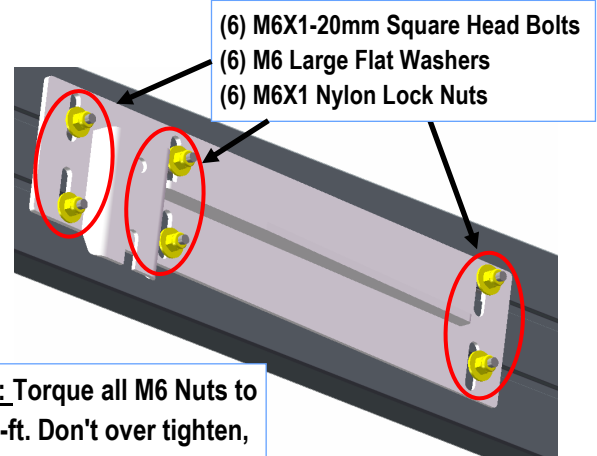
(Fig 8) Slip M6X1-20mm Square Head Bolts into the bottom channel

- (2) M6X1-20mm Square Head Bolts
- (2) M6 Large Flat Washers
- (2) M6X1 Nylon Lock Nuts

NOTE: Torque all M6 Nuts to 6~7 lb-ft. Don't over tighten, or the thread form of the nuts will be damaged.



(Fig 9) Running Board Installed onto Front & Center Mounting Brackets



NOTE: Torque all M6 Nuts to 6~7 lb-ft. Don't over tighten, or the thread form of the nuts will be damaged.

(Fig 10) Running Board Installed onto Rear Bar Bracket

STEP 7

Repeat **Steps 1-6** for the Passenger side Running Board installation. The installation is completed (**Fig 11**).



(Fig 11) Installation Completed

Attention

Do periodic inspections to the installation to make sure that all hardware is secure and tight.

In order to protect your bars/boards, please use only mild soap/non-abrasive products for cleaning.