

iBoard®

iBoard® by APS

PART#: IB-197A&B

READ INSTRUCTIONS CAREFULLY BEFORE STARTING INSTALLATION. REMOVE CONTENTS FROM BOX AND VERIFY ALL PARTS ARE PRESENT. ASSISTANCE IS RECOMMENDED.

*ROCKER PANEL MOUNT
*NO DRILLING REQUIRED

Fastener Size	Tightening Torque (ft-lbs)
6mm	6-7
8mm	16-18
10mm	31-32
12mm	56-58
14mm	92-94

Item	QTY	Description	Item	QTY	Description
1#	6	Mounting Brackets	5#	12	M8 Clip Nuts
2#	12	M8X1.25-25mm Hex Bolts	6#	12	M6X1-20mm Square Head Bolts
3#	12	M8 Large Flat Washers	7#	12	M6 Large Flat Washers
4#	12	M8 Lock Washers	8#	12	M6X1 Nylon Lock Nuts



2 #



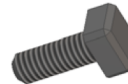
3 #



4 #



5 #



6 #



7 #



8 #

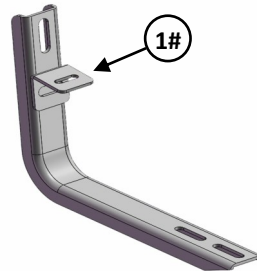
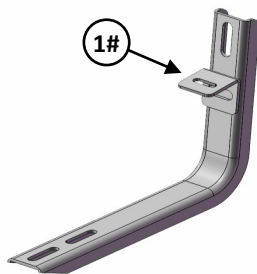
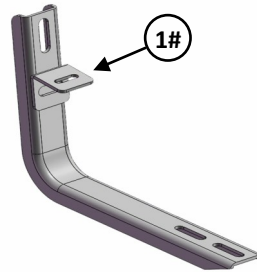
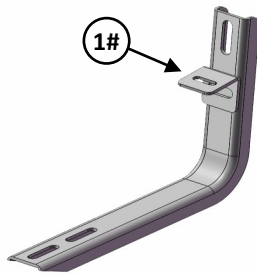
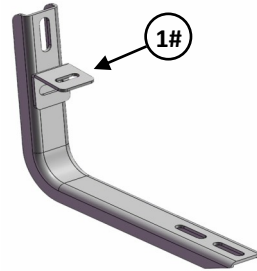
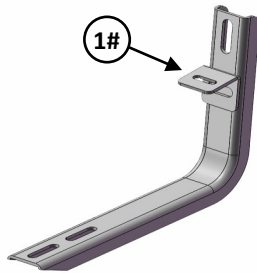
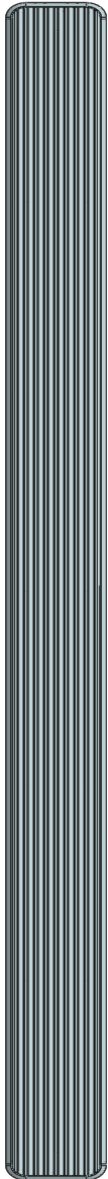
iBoard®

Driver

Front



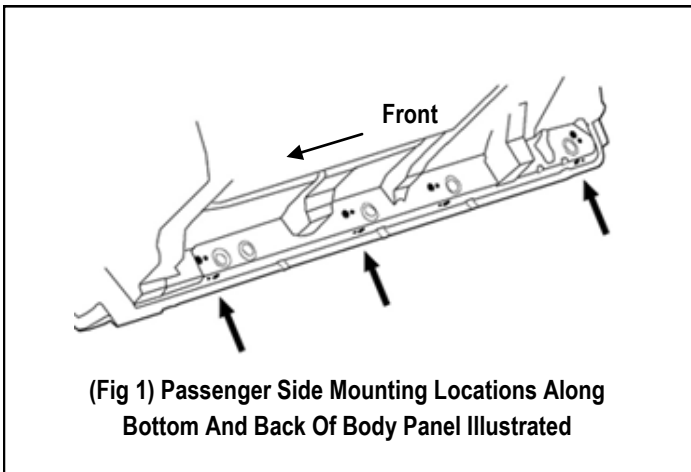
Passenger



iBoard®

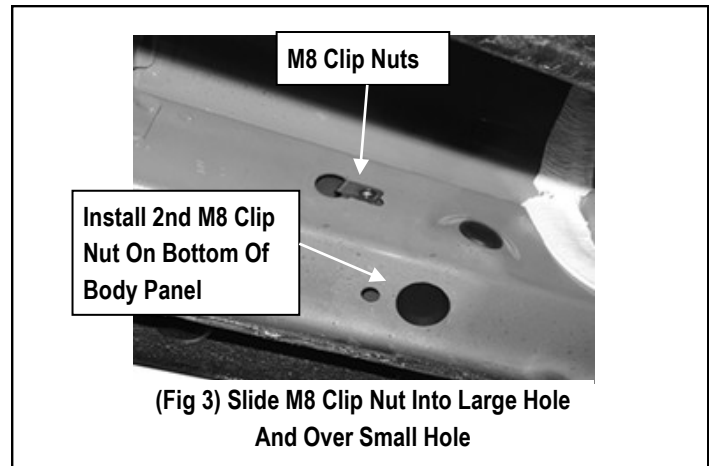
STEP 1

Start the installation under the passenger side of the vehicle. Locate the 3 factory running board mounting locations along the bottom and inner side of the body, **(Fig1)**. Mounting Brackets will bolt to the 1st, 2nd and 4th mounting locations.



STEP 2

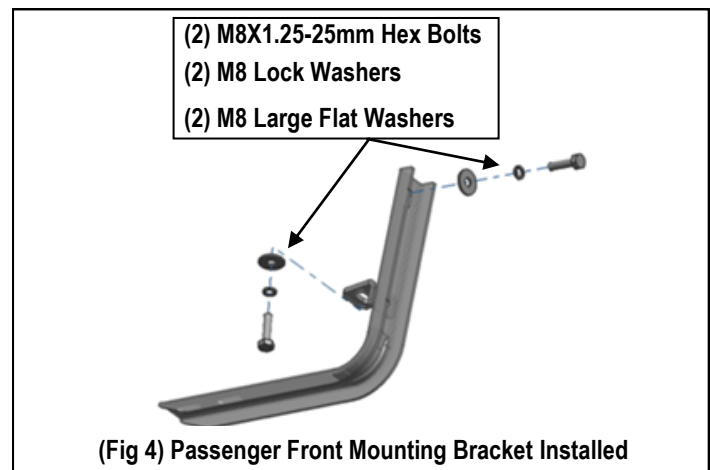
Remove rubber plugs as necessary from the holes in the side and bottom of the inner body panel, **(Fig 2)**. Select (1) M8 Clip Nut. Slide the M8 Clip Nut into the large hole and over the smaller hole next to it in the side of the body panel. Line up threaded nut on the M8 Clip Nut with smaller hole in body panel, **(Fig 3)**. Repeat to install a M8 Clip Nut in the bottom mounting location.



STEP 3

Select (1) Passenger Front Mounting Bracket.. Bolt the Passenger Front Mounting Bracket to the (2) M8 Clip Nuts (which were installed on step 2) with (2) M8X1.25-25mm Hex Bolts, (2) M8 Lock Washers and (2) M8 Large Flat Washers, **(Fig 4)**. Snug but do not fully tighten the hardware.

Note: All Mounting Brackets are universal.



STEP 4

Repeat **Steps 2-3** to install the remaining Passenger Center and Rear Mounting Brackets. do not fully tighten the hardware at this time.

iBoard®

STEP 5

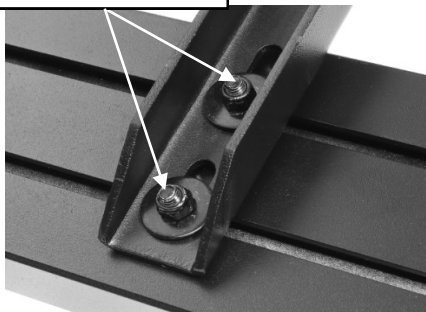
Select a Running Board. Slip (3) M6x1-20mm Square Head Bolts into each bottom channel (**Fig 5**). Carefully position the Running Board onto the (3) Mounting Brackets.

IMPORTANT: Do not slide the Running Board on the Brackets or the bottom surface of the board will be damaged. Attach the Running Board to each Mounting Bracket with (2) M6x1-20mm Square Head Bolts, (2) M6 Large Flat Washers and (2) M6 X1 Nylon Lock Nuts (**Fig 6**). Do not fully tighten the hardware at this time.



(Fig 5) Slip M6X1-20mm Square Head Bolts Into The Bottom Channels

(2)M6X1-20mm Square Head Bolts
(2)M6 Large Flat Washers
(2)M6X1 Nylon Lock Nuts



(Fig 6) Running Board Installed Onto Mounting Bracket

STEP 6

Level and adjust the Running Board and fully tighten all hardware.

STEP 7

Repeat **Steps 1-6** for the other side Running Board installation. The installation is completed (**Fig 7**).



(Fig 7) Installation Completed

Attention

Do periodic inspections to the installation to make sure that all hardware is secure and tight.

In order to protect your bars/boards, please use only mild soap/non-abrasive products for cleaning.