

# iBoard®

## iBoard® by APS

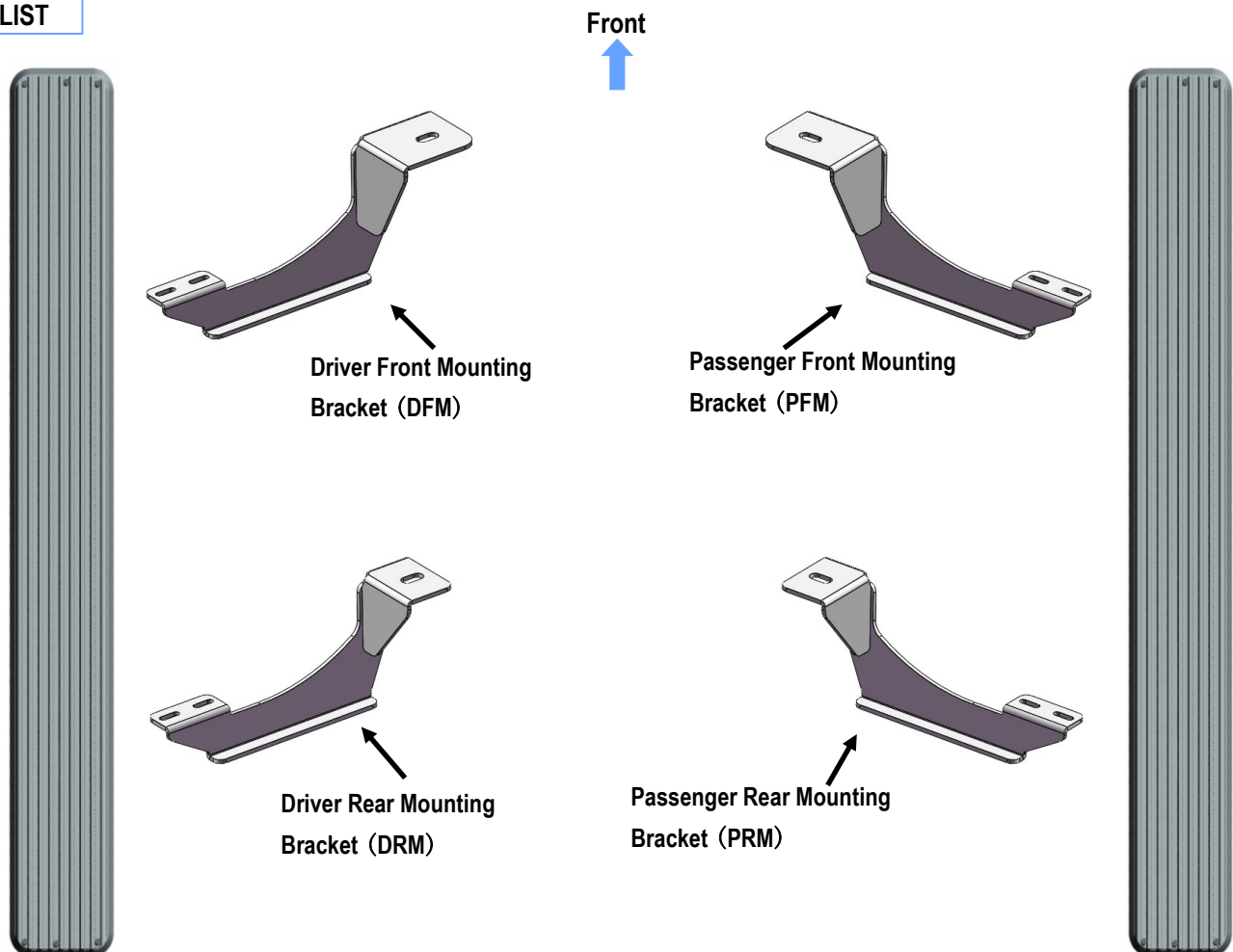
PART#: IB-024A-B

**READ INSTRUCTIONS CAREFULLY BEFORE  
STARTING INSTALLATION. REMOVE CONTENTS  
FROM BOX AND VERIFY ALL PARTS ARE PRE-  
SENT. ASSISTANCE IS RECOMMENDED.**

**\*ROCKER PANEL MOUNT  
\*NO DRILLING REQUIRED**

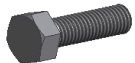
Fastener Size	Tightening Torque (ft-lbs)
6mm	6-7
8mm	16-18
10mm	31-32
12mm	56-58
14mm	92-94

### PART LIST



Customer Support: [info@iboardauto.com](mailto:info@iboardauto.com)

# iBoard®



**X4**

M12X1.75-120mm  
Hex Bolt



**X4**

M12 Flat Washer



**X4**

M12 Lock Washer



**X8**

M6X1-20mm Square  
Head Bolt



**X8**

M6 Large Flat  
Washer



**X8**

M6X1 Nylon  
Lock Nut

## STEP 1

Start installation from the driver side of the vehicle. Remove the factory front body mount bolt.

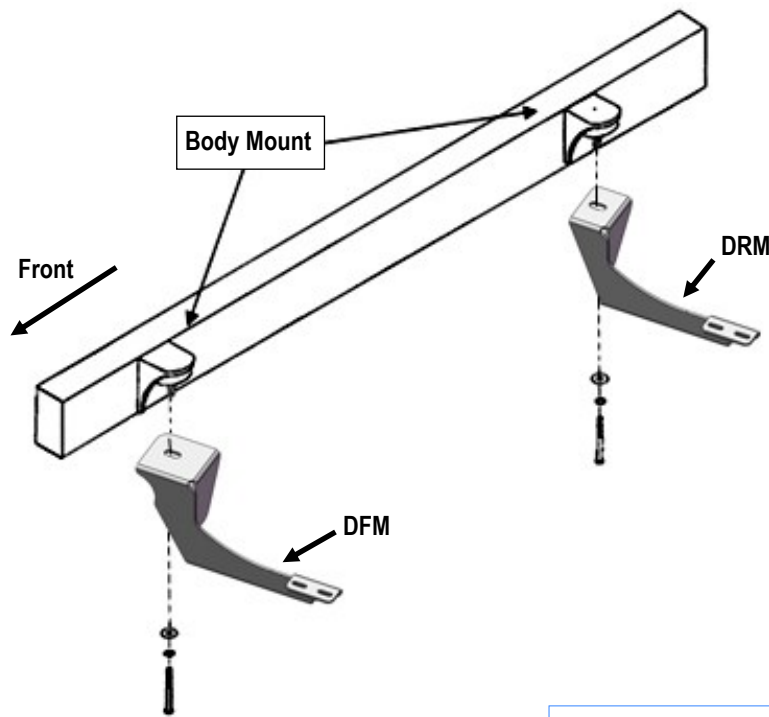
## STEP 2

Select the Driver Front Mounting Bracket (**DFM**). Use the included (1) M12X1.75-120mm Hex Bolt, (1) M12 Lock Washer and (1) M12 Flat Washer to attach the Bracket to the body mount, (**Fig 1**). Do not fully tighten hardware at this time.

**IMPORTANT:** To prevent unnecessary noise, adjust the position of all Mounting Brackets. Before tightening the Hex bolts, make sure the Mounting Brackets out of reach the factory steel body.

## STEP 3

Move toward the rear of the vehicle. Repeat **Steps 1-2** for Driver Rear Mounting Bracket (**DRM**) installation, (**Fig 1**). Do not fully tighten hardware at this time.



(Fig 1) Driver Side Mounting Bracket Installation

# iBoard®

## STEP 4

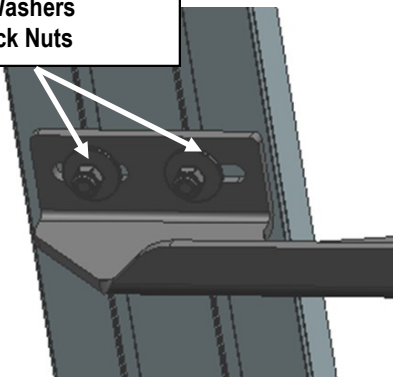
Select a Running Board. Slip (2) M6x1-20mm Square Head Bolts into each bottom channel (**Fig 2**). Carefully position the Running Board onto the (2) Mounting Brackets.

**IMPORTANT:** Do not slide the Running Board on the Brackets or the bottom surface of the board will be damaged. Attach the Running Board to Mounting Bracket with (4) M6x1-20mm Square Head Bolts, (4) M6 Large Flat Washers and (4) M6 X1 Nylon Lock Nuts (**Fig 3**). Do not fully tighten hardware at this time.



(Fig 2) Slip M6X1-20mm Square Head Bolts Into The Bottom Channels

(2) M6X1-20mm Square Head Bolts  
(2) M6 Large Flat Washers  
(2) M6X1 Nylon Lock Nuts



(Fig 3) Running Board Installed Onto Mounting Bracket (Example)

## STEP 5

Level and adjust the Running Board and fully tighten all hardware.

## STEP 6

Repeat **Steps 1-5** for the other side Running Board installation. The installation is completed (**Fig 4**).



(Fig 4) Installation Completed

### Attention

Do periodic inspections to the installation to make sure that all hardware is secure and tight.

In order to protect your bars/boards, please use only mild soap/non-abrasive products for cleaning.