

# iArmor®

## iArmor® by APS

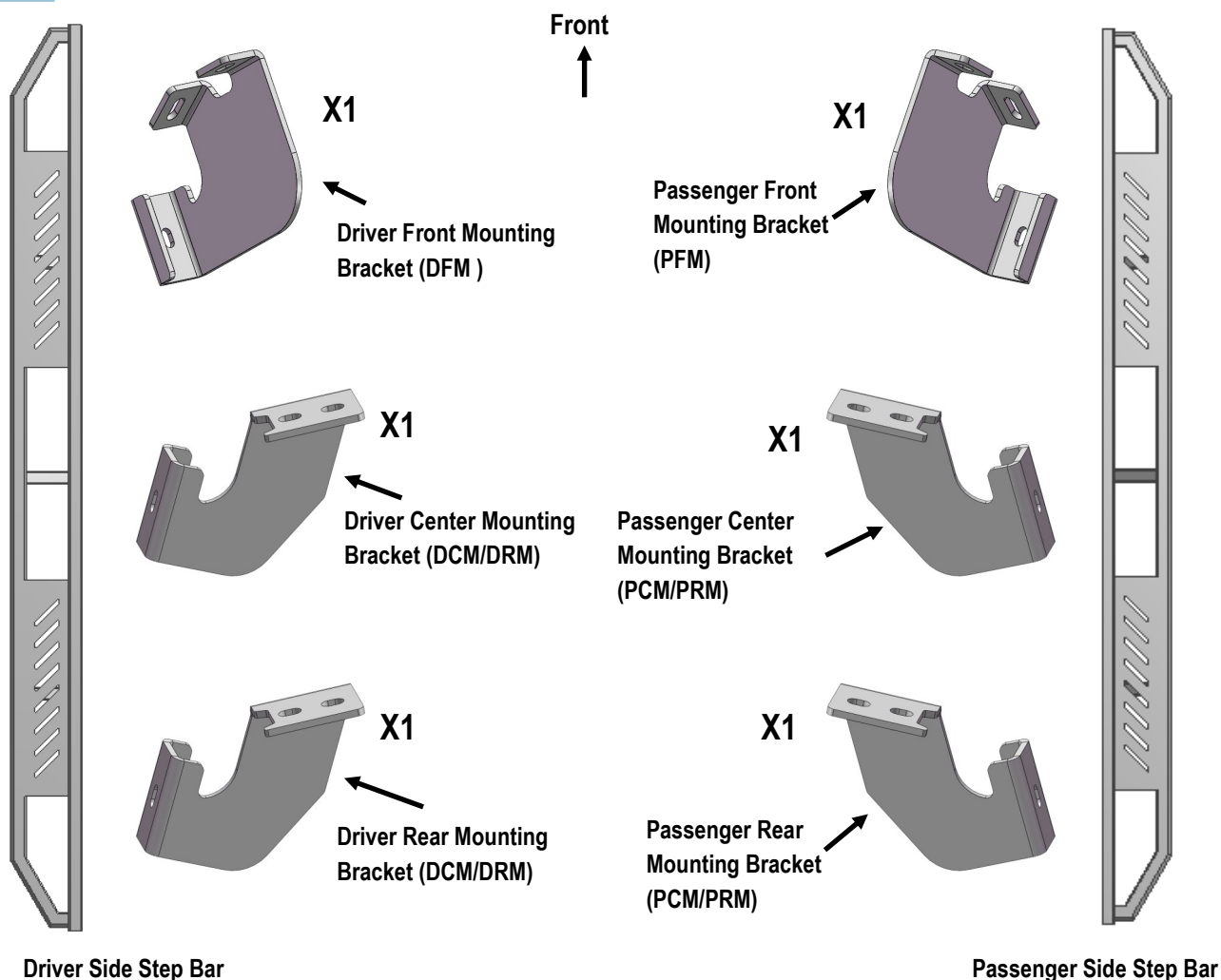
PART#: IA-S056

### BEFORE INSTALLATION

REMOVE CONTENTS FROM BOX. VERIFY ALL PARTS ARE PRESENT. READ INSTRUCTIONS CAREFULLY BEFORE STARTING INSTALLATION. ASSISTANCE IS RECOMMENDED. THANK YOU FOR CHOOSING OUR PRODUCT!

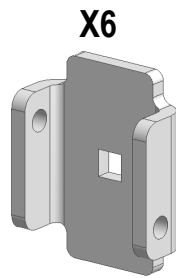
Fastener Size	Tightening Torque (ft-lbs)
6mm	6-7
8mm	16-18
10mm	31-32
12mm	56-58
14mm	92-94

### PART LIST



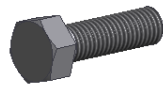
Customer Support: [info@iarmorauto.com](mailto:info@iarmorauto.com)

# iArmor®



**X6**

U Bracket



**X12**

M8X1.25-25mm Hex Bolt



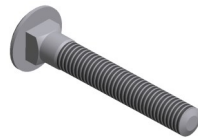
**X18**

M8 Large Flat Washer



**X18**

M8 Lock Washer



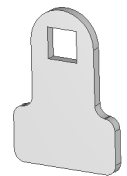
**X6**

M8X1.25-55mm Carriage Bolt



**X6**

M8X1.25 Hex Nut



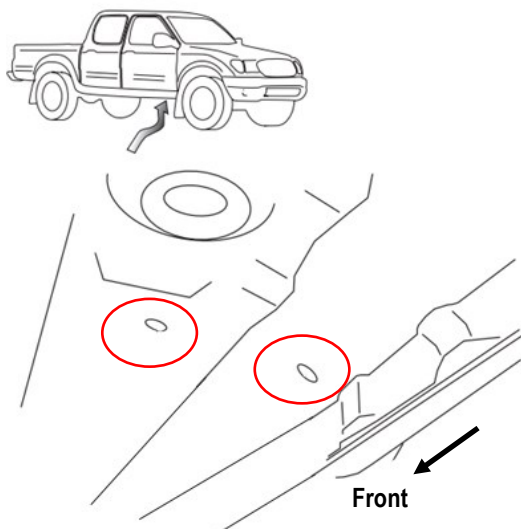
**X12**

Spacer

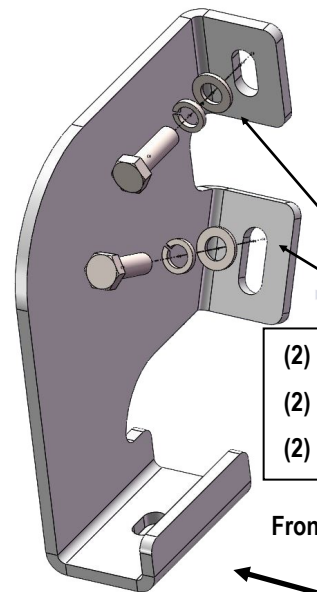
The instruction here is for your reference only. We strongly recommend the professional installer for best result. We are not responsible for any damage caused by the installation.

## STEP 1

Starting on the passenger side of the vehicle. Attach Passenger Front Mounting Bracket (PFM) as shown. Hand tighten (Fig 1-2).



(Fig 1) Passenger Front Mounting Location Pictured

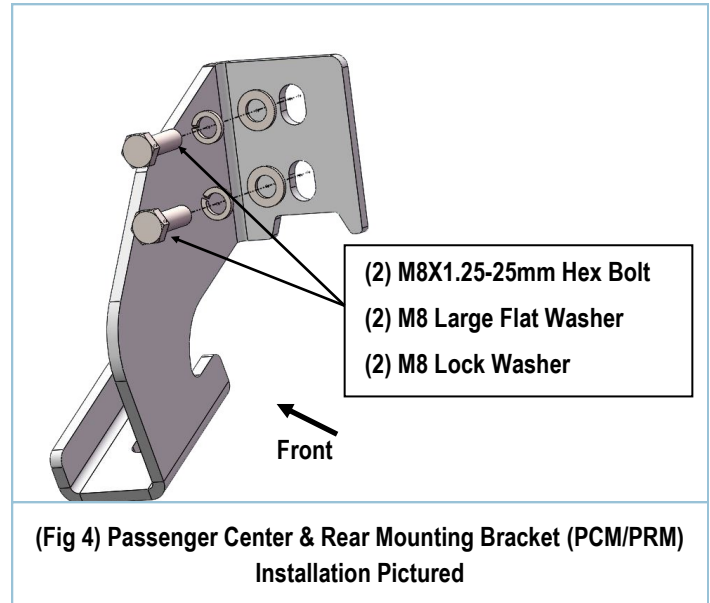
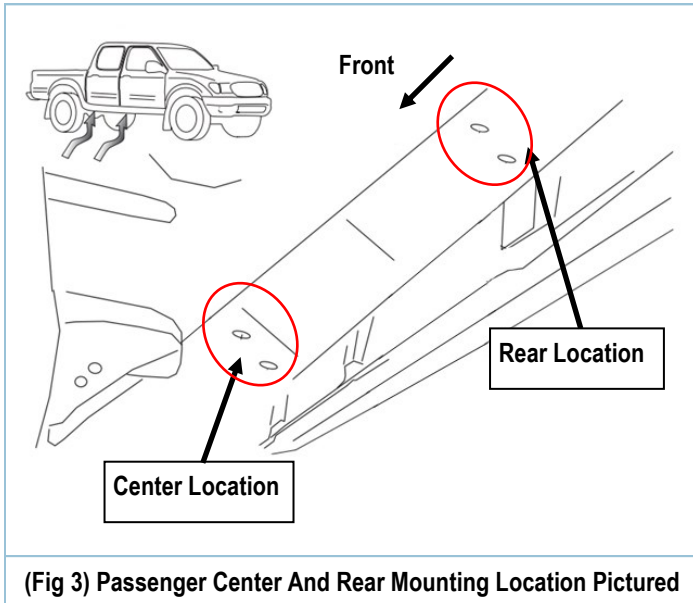


(Fig 2) Passenger Front Mounting Bracket (PFM ) Installation Pictured

## STEP 2

Attach Passenger Center & Rear Mounting Bracket (PCM/PRM) as shown. Hand tighten (See Fig 3-4).

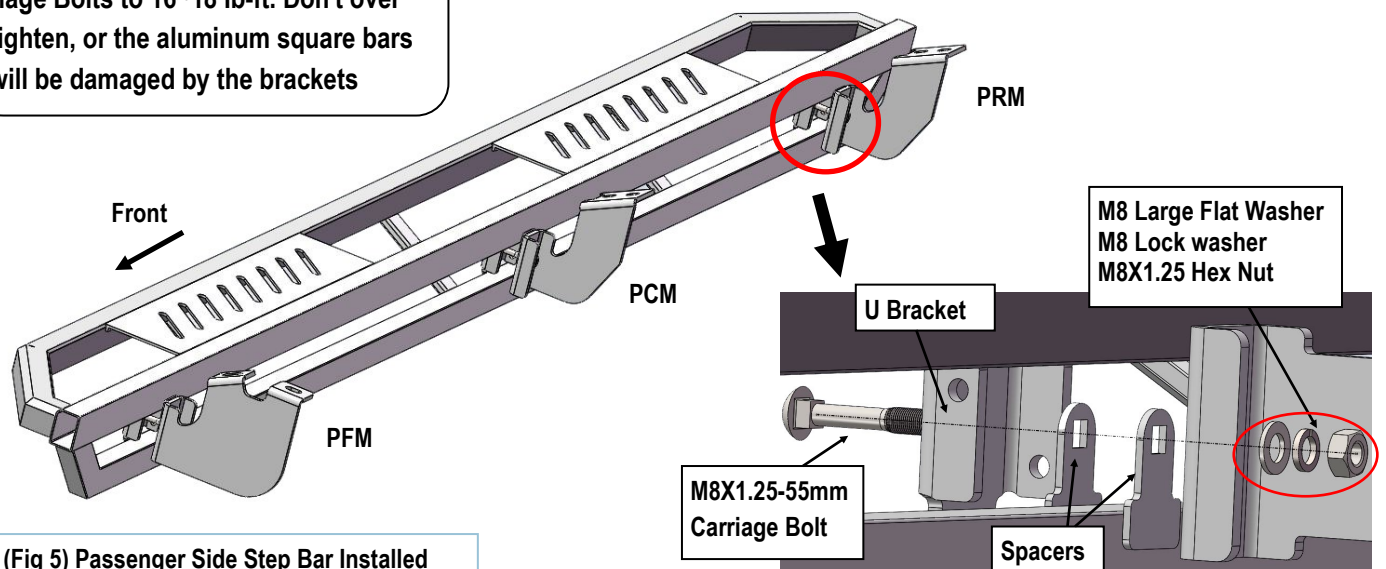
# iArmor®



## STEP 3

Once all (3) passenger side mounting brackets are installed, select and attach the Passenger Side Step Bar onto the Mounting Brackets with (3) U Brackets, (6) Spacers, (3) M8X1.25-55mm Carriage Bolts, (3) M8 Large Flat Washers, (3) M8 Lock Washers and (3) M8X1.25 Hex Nuts (Fig 5). Do not fully tighten hardware at this time.

**NOTE:** Torque all M8 X1.25-55mm Carriage Bolts to 16~18 lb-ft. Don't over tighten, or the aluminum square bars will be damaged by the brackets



# iArmor®

## STEP 4

Properly level and adjust the Step Bar and fully tighten all hardware.

## STEP 5

Move to the driver side of the vehicle. Repeat **Steps 1-4** to install driver side step bar.

Installation completed (**Fig 6**).



(Fig 6) Installation Completed

### Attention

**Do periodic inspections to the installation to make sure that all hardware is secure and tight.**

**In order to protect your bars/boards, please use only mild soap/non-abrasive products for cleaning.**