

iArmor[®]

iArmor[®] by APS

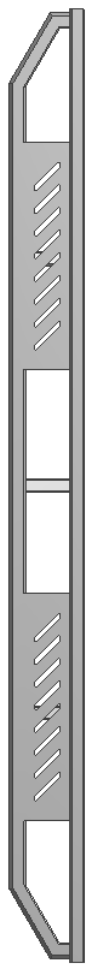
PART#: IA-S107

BEFORE INSTALLATION

REMOVE CONTENTS FROM BOX. VERIFY ALL PARTS ARE PRESENT. READ INSTRUCTIONS CAREFULLY BEFORE STARTING INSTALLATION. ASSISTANCE IS RECOMMENDED. THANK YOU FOR CHOOSING OUR PRODUCT!

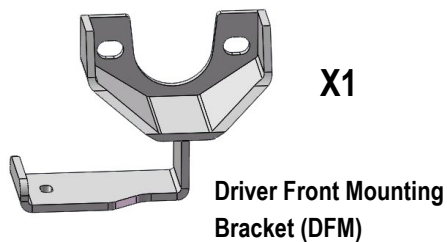
Fastener Size	Tightening Torque (ft-lbs)
6mm	6-7
8mm	16-18
10mm	31-32
12mm	56-58
14mm	92-94

PART LIST



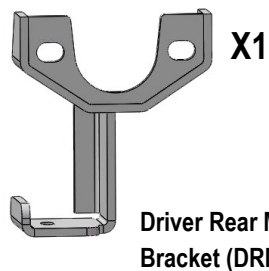
Driver Side Step Bar

Front
↑



X1

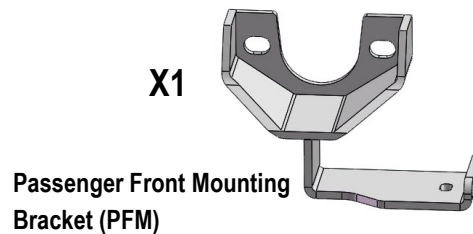
Driver Front Mounting Bracket (DFM)



X1

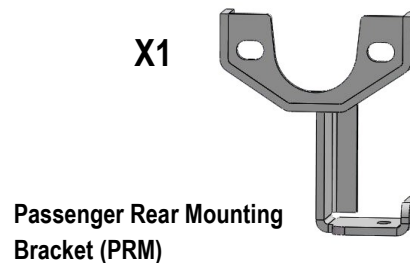
Driver Rear Mounting Bracket (DRM)

X1



Passenger Front Mounting Bracket (PFM)

X1

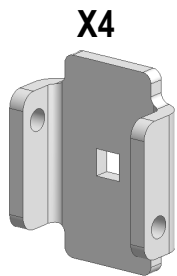


Passenger Rear Mounting Bracket (PRM)



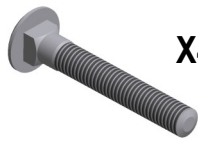
Passenger Side Step Bar

iArmor®



U Bracket

X4



M8X1.25-55mm Carriage Bolt

X4



M8 Large Flat Washer

X4



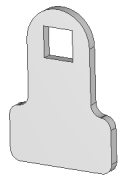
M8 Lock Washer

X4



M8X1.25 Hex Nut

X4



Spacer

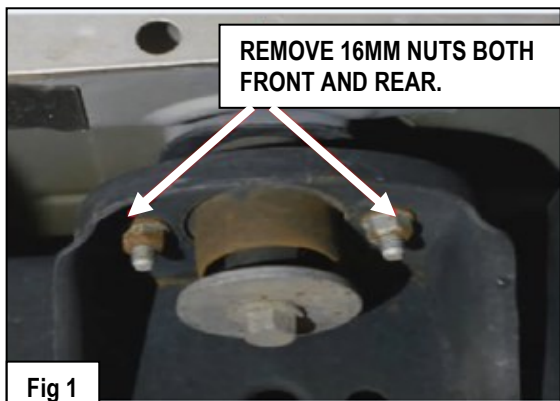
X8

The instruction here is for your reference only. We strongly recommend the professional installer for best result. We are not responsible for any damage caused by the installation.

STEP 1

Identify the Driver and Passenger side.

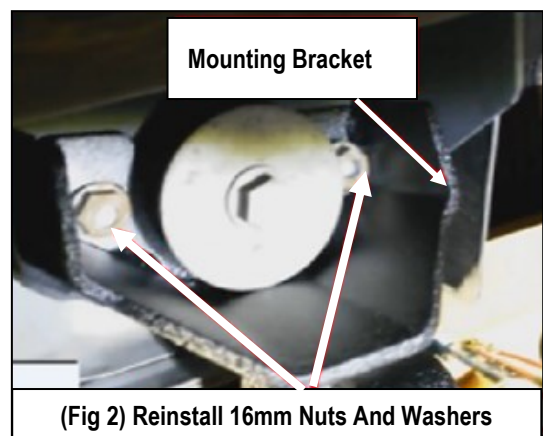
Remove all the 16mm nuts from the front and rear body mount area. **(Fig 1)**



STEP 2

Install the bracket on the vehicle by placing the cut-outs in the top of the brackets around the body mounts.

Lining up the two holes in the top of the brackets with the OE **(Fig 2)**.

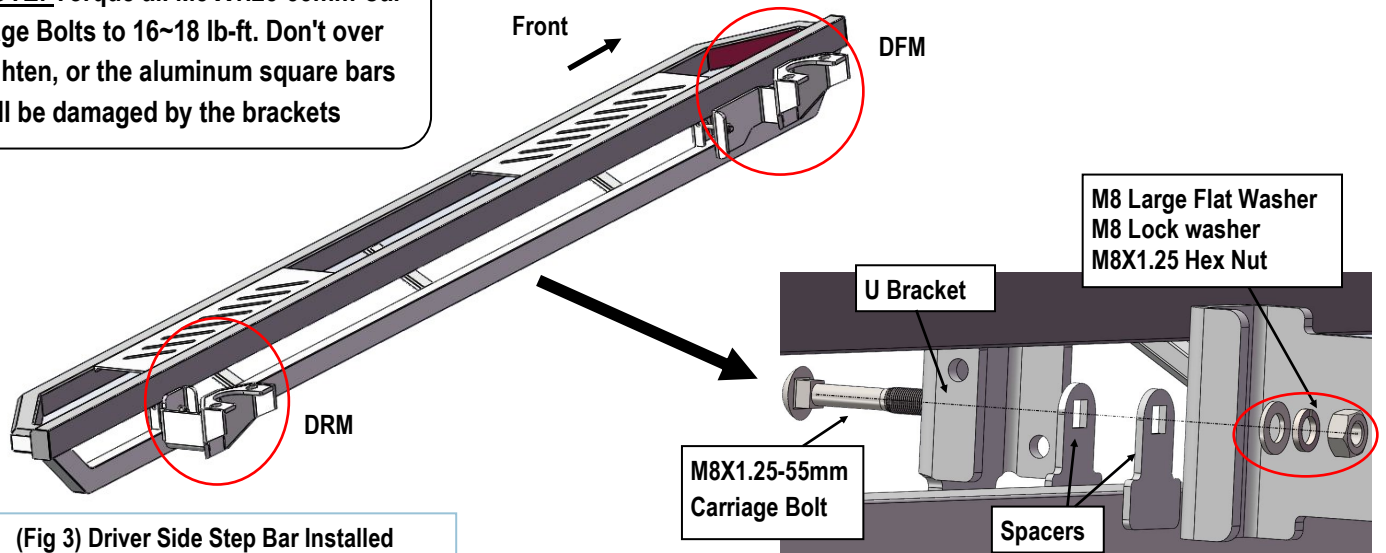


STEP 3

Once all (2) driver side mounting brackets are installed, select and attach the Driver Side Step Bar onto the Mounting Brackets with (2) U Brackets, (4) Spacers, (2) M8X1.25-55mm Carriage Bolts, (2) M8 Large Flat Washers, (2) M8 Lock Washers and (2) M8X1.25 Hex Nuts **(Fig 3)**. Do not fully tighten hardware at this time.

iArmor®

NOTE: Torque all M8 X1.25-55mm Carriage Bolts to 16~18 lb-ft. Don't over tighten, or the aluminum square bars will be damaged by the brackets



(Fig 3) Driver Side Step Bar Installed

STEP 4

Properly level and adjust the Step Bar and fully tighten all hardware.

STEP 5

Move to the passenger side of the vehicle. Repeat **Steps 1-4** to install passenger side step bar.

Installation completed (Fig 4).



(Fig 4) Installation Completed

Attention

Do periodic inspections to the installation to make sure that all hardware is secure and tight.

In order to protect your bars/boards, please use only mild soap/non-abrasive products for cleaning.