

IARMOR EDGE™

PART#: IA-N107

BEFORE INSTALLATION

REMOVE CONTENTS FROM BOX. VERIFY ALL PARTS ARE PRESENT. READ INSTRUCTIONS CAREFULLY BEFORE STARTING INSTALLATION. ASSISTANCE IS RECOMMENDED. THANK YOU FOR CHOOSING OUR PRODUCT!

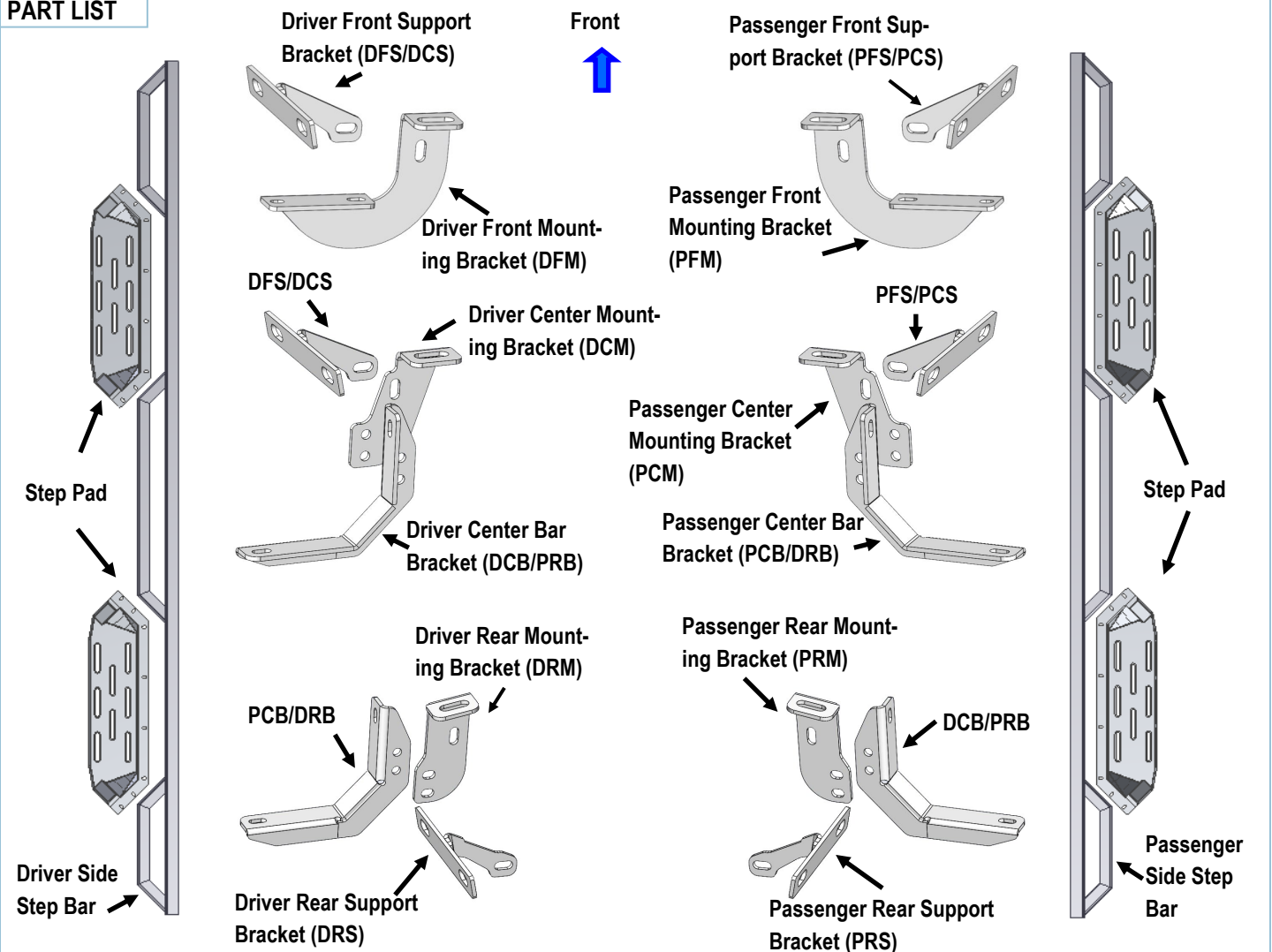
***DRILLING NOT REQUIRED**

***TRIMMING NOT REQUIRED**

Torque Value

Fastener Size	Tightening Torque (ft-lbs)
6mm	6-7
8mm	16-18
10mm	31-32
12mm	56-58
14mm	92-94

PART LIST

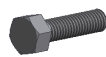


iArmor®



X6

M8X1.25 Nut Plate



X16

M8X1.25-35 Hex Bolt



X6

M8 Large Flat Washer



X6

M8 Lock Washer



X20

M8 Flat Washer



X10

M8X1.25 Nylon Lock Nut



X8

M8X1.25-20 Inner Hex Bolt



X8

M8X1.25 Hex Flange Nut



X12

M6X1-25 Hex Bolt



X68

M6 Large Flat Washer



X56

M6X1 Nylon Lock Nut



X36

M6X1-20 T-Bolt



X8

M6X1-20 Square Head Bolt



X8

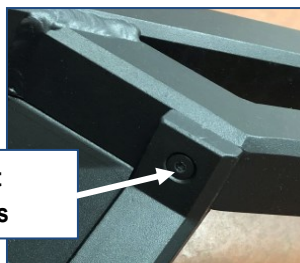
M6X1-20 Flat Sunk Head Bolt

The instruction here is for your reference only. We strongly recommend the professional installer for best result. We are not responsible for any damage caused by the installation.

STEP 1

Install the Step Pads onto the step bars with (32) M6x1-20 T-Bolts, (32) M6 Large Flat Washers, (32) M6X1Nylon Lock Nuts and (8) M6X1-20 Flat sunk head bolts.

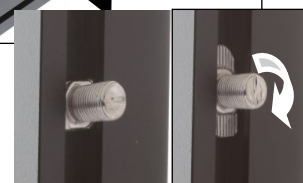
IMPORTANT: Don't hit the step pad by any metal hammer within step pad installation, or the step pad will be damaged.



(2) M6x1-20 Flat Sunk Head bolts



(8) M6x1-20 T-Bolts
(8) M6 Large Flat Washers
(8) M6X1 Nylon Lock Nuts



STEP 2

Start installation from the driver side front of the vehicle. Determine if the vehicle with open mounting locations or factory threaded holes in the floor panel.

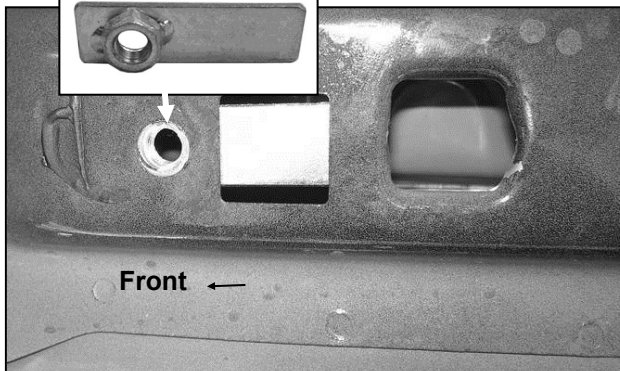
A. Vehicles with open mounting location:

a. Insert (1) M8X1.25 Nut Plate into the large square opening in the floor panel. Line up the threaded nut with the hole in between the pair of holes on the pinch weld, (Fig 1A, 1B & 2).

b. Move along to the center/ rear mounting location, (Fig 3). Repeat **Step 2a** to insert the Nut Plate into the center/ rear opening on the floor panel.

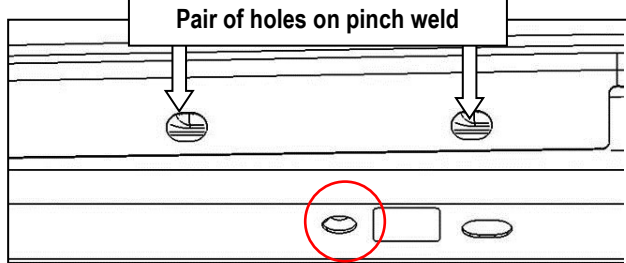
iArmor®

(Fig 1B) Nut Plate

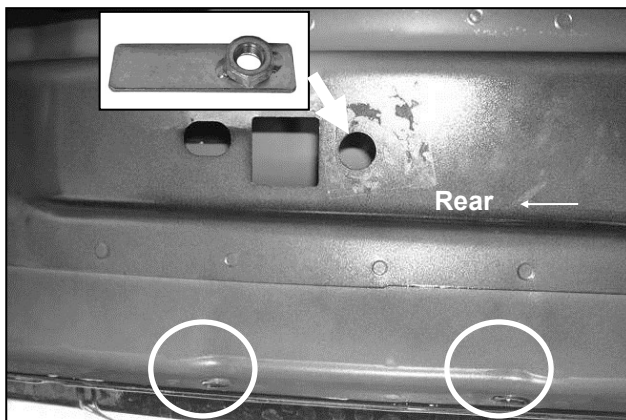


(Fig 1A) Driver Side Front Mounting Location
(Vehicles with open mounting location)

Pair of holes on pinch weld

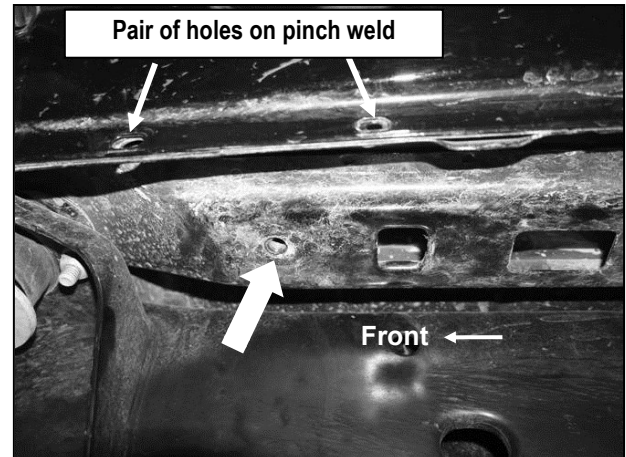


(Fig 2) Line up Nut Plate with hole in between the (2)
holes on the pinch weld



(Fig 3) Driver Side Center/Rear Mounting Location
(Vehicles with open mounting location)

B. Vehicles with factory threaded hole in floor panel:
Locate the front, center and rear mounting locations, (Fig 4 & 5). Continue to **Step 3**.



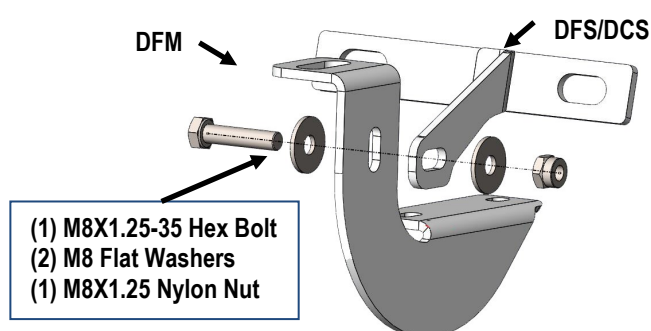
(Fig 4) Driver Side Front Mounting Location
(Vehicles with factory threaded hole in floor panel)



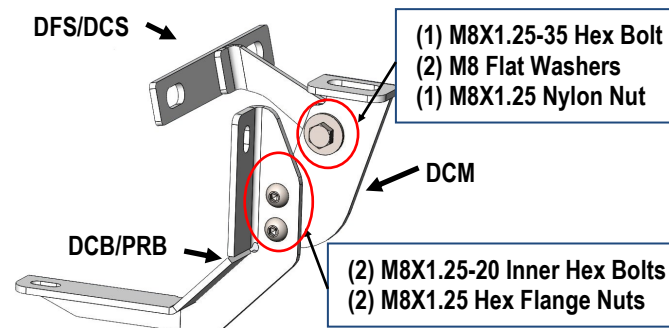
(Fig 5) Driver Side Center & Rear Mounting Location
(Vehicles with factory threaded hole in floor panel)

STEP 3

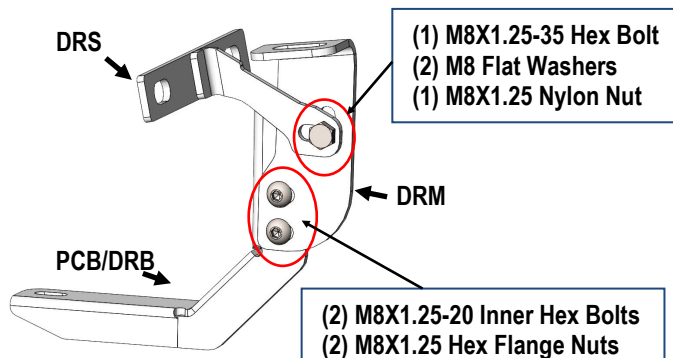
Assemble (3) Driver Side Mounting Brackets and Driver Side Support Brackets (**Fig 6-8**). Do not fully tighten hardware at this time.



(Fig 6) Driver Front Mounting Bracket Assembly



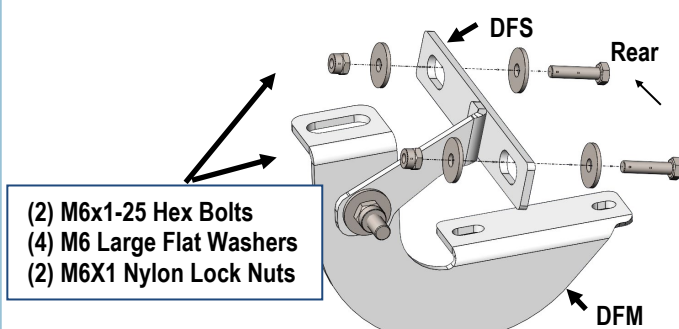
(Fig 7) Driver Center Mounting Bracket Assembly



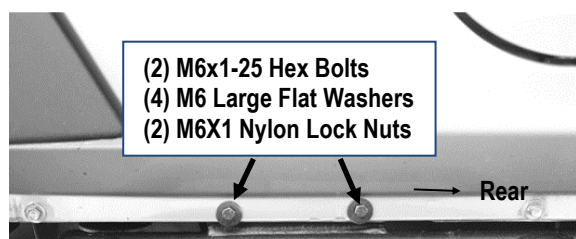
(Fig 8) Driver Rear Mounting Bracket Assembly

STEP 4

On Driver Side Front Mounting Location. Attach the Driver Support Bracket (**DFS**) on the **back** of the pinch weld. Secure to the (2) pairs of holes on the pinch weld with (2) M6X1-25 Hex Bolts, (4) M6 Large Flat Washers & (2) M6X1 Nylon Lock Nuts (**Fig 9 & 10**). Don't fully tighten hardware at this time.



(Fig 9) Driver Front Support Bracket Installed



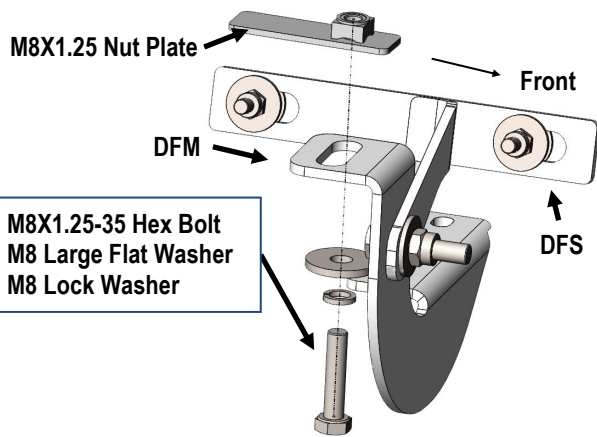
(Fig 10) Driver Front Support Bracket Installed

STEP 5

Vehicles with open mounting location:

Bolt the Driver Front Mounting Bracket to the M10X1.5 Nut Plate with (1) M8X1.25-35 Hex Bolt, (1) M8 Lock Washer and (1) M8 Large Flat Washer. (**Fig 11**). Do not fully tighten hardware at this time.

iArmor®

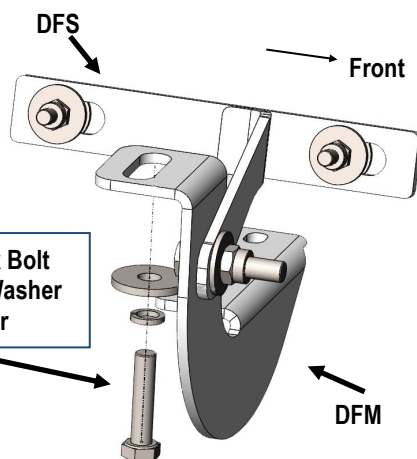


(Fig 11) Driver Front Mounting Bracket Installed
(Vehicles with open mounting location)

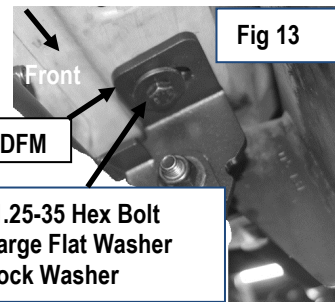
STEP 6

Vehicles with factory threaded hole in floor panel:

Bolt the Mounting Bracket to the threaded hole in the floor panel with (1) M8X1.25-35 Hex Bolt, (1) M8 Large Flat Washer, (1) M8 Lock Washer (Fig 12, 13). Do not fully tighten hardware at this time.

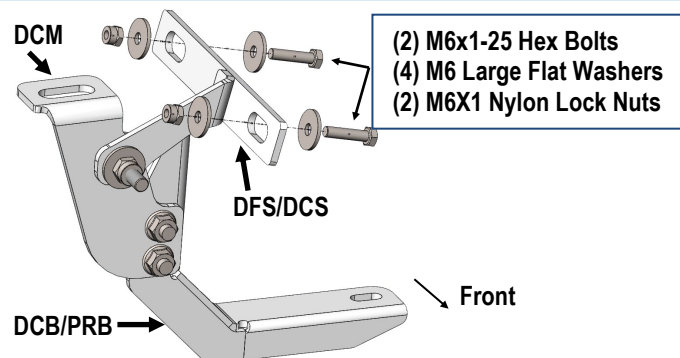


(Fig12) Driver Front Mounting Bracket Installed
(Vehicles with factory threaded hole in floor panel)

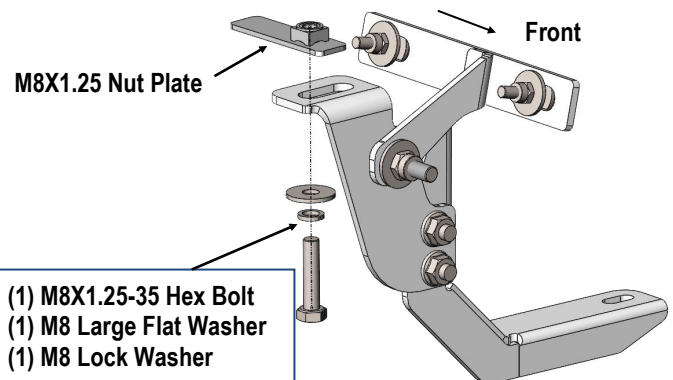


STEP 7

Repeat **steps 4-6** to install the Assembled Driver Center Mounting Bracket (Fig 14-17). Do not fully tighten hardware at this time.

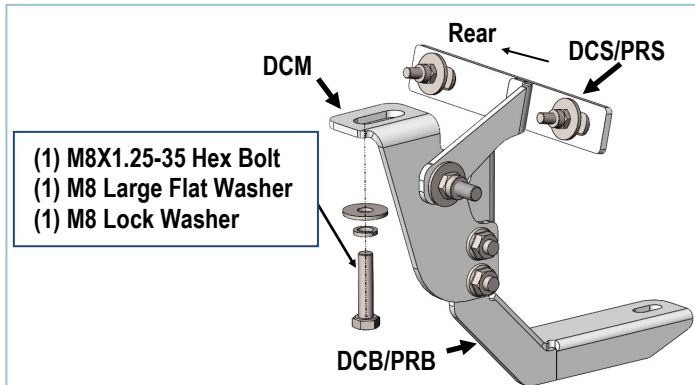


(Fig 14) Driver Center Support Bracket Mounted to Pinch Weld

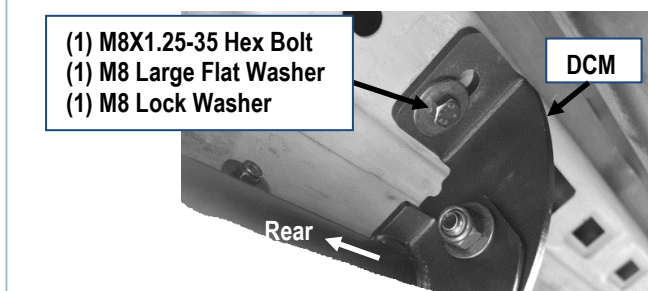


(Fig15) Driver Center Mounting Bracket Installed
(Vehicles with open mounting location)

iArmor®



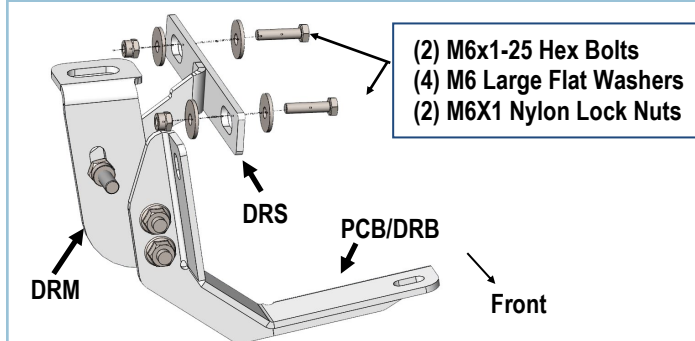
(Fig16) Driver Center Mounting Bracket Installed
(Vehicles with factory threaded hole in floor panel)



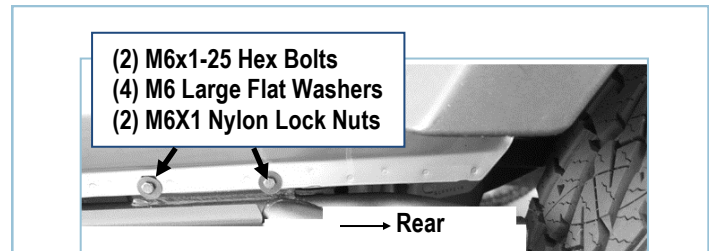
(Fig17) Driver Center Mounting Bracket Installed

STEP 8

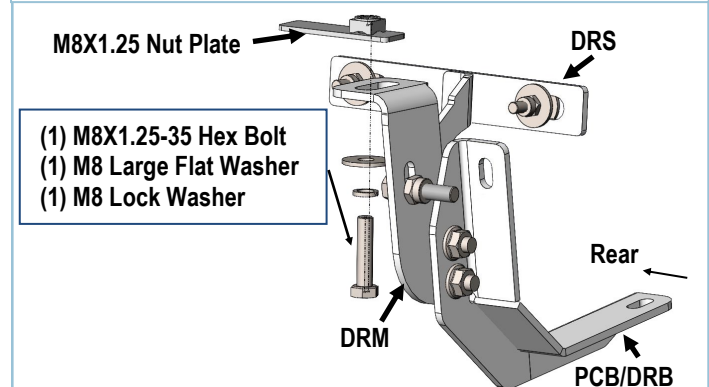
Repeat **steps 4-6** to install the Assembled Driver Rear Mounting Bracket (Fig 18-22). Do not fully tighten hardware at this time.



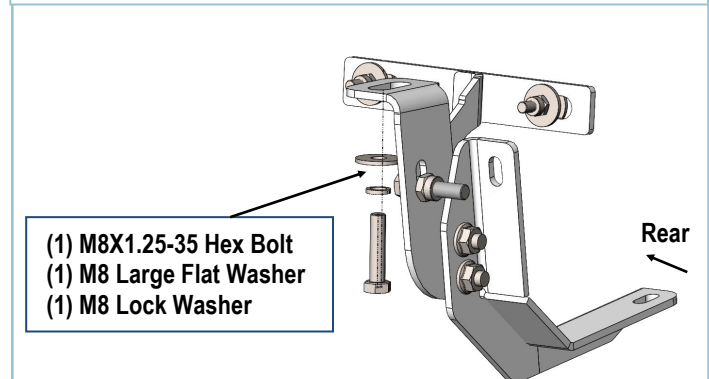
(Fig 18) Driver Rear Support Bracket Mounted to Pinch Weld



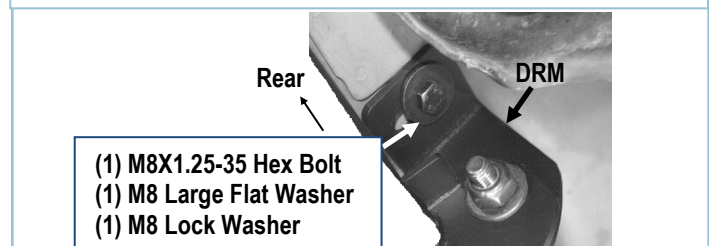
(Fig 19) Driver Rear Support Bracket Mounted to Pinch Weld



(Fig 20) Driver Rear Mounting Bracket Installed
(Vehicles with open mounting location)



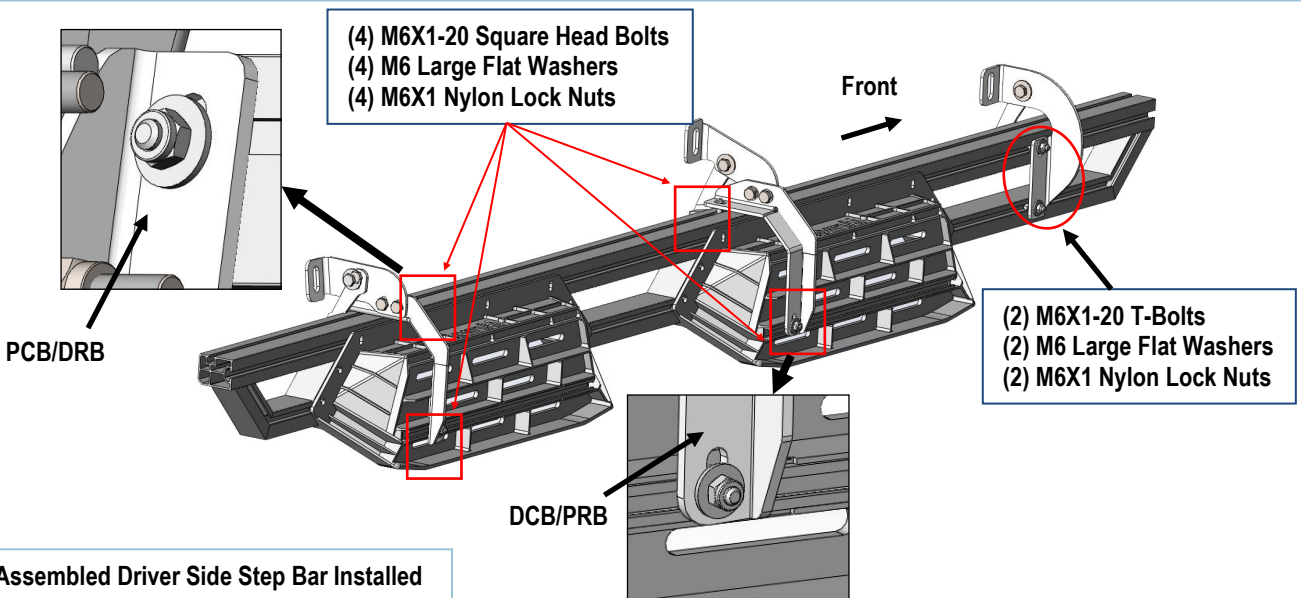
(Fig21) Driver Rear Mounting Bracket Installed
(Vehicles with factory threaded hole in floor panel)



(Fig22) Driver Rear Mounting Bracket Installed

STEP 9

Once (3) driver side brackets are installed, attach the Assembled Driver Side Step Bar on the Mounting Brackets with (2) M6X1-20 T-Bolts, (4) M6X1-20 Square Head Bolts, (6) M6 flat washers and (6) M6x1 Nylon Lock Nuts, **(Fig 23)**. Do not fully tighten hardware at this time.



(Fig 23) Assembled Driver Side Step Bar Installed

STEP 10

Level and adjust the Assembled Step Bar properly and tighten all hardware.

Do periodic inspections to the installation to make sure that all hardware is secure and tight.

Attention

In order to protect your bars/boards, please use only mild soap/non-abrasive products for cleaning.

STEP 11

Repeat **steps 2-10** to install the passenger side step bar.