

IARMOR EDGE™

PART#: IA-N116

BEFORE INSTALLATION

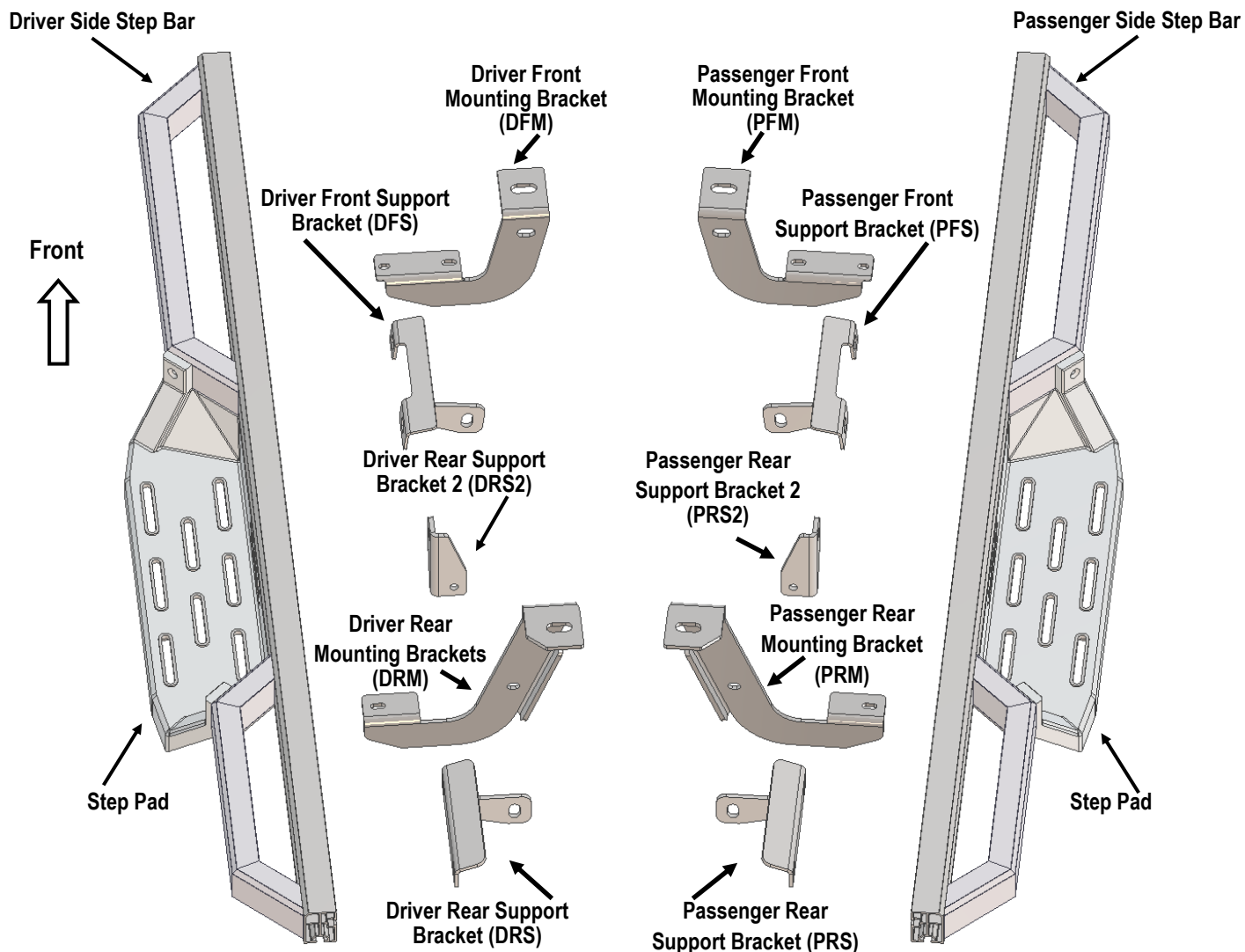
REMOVE CONTENTS FROM BOX. VERIFY ALL PARTS ARE PRESENT. READ INSTRUCTIONS CAREFULLY BEFORE STARTING INSTALLATION. ASSISTANCE IS RECOMMENDED. THANK YOU FOR CHOOSING OUR PRODUCT!

*DRILLING NOT REQUIRED

*TRIMMING NOT REQUIRED

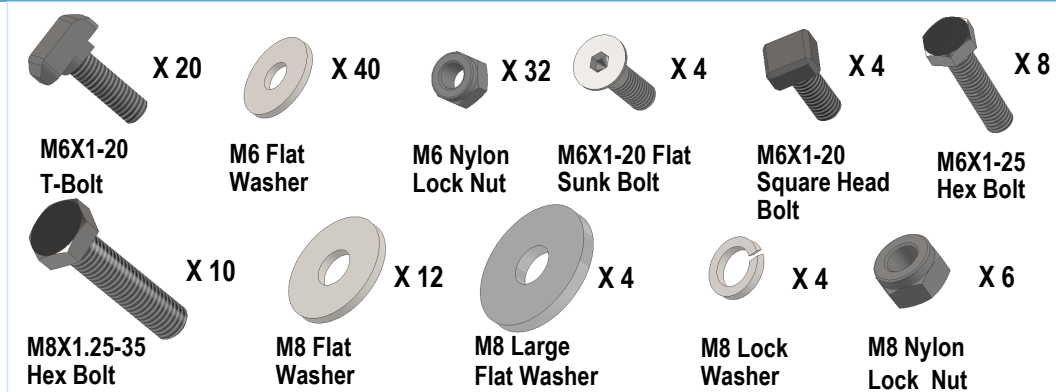
Torque Value

Fastener Size	Tightening Torque (ft-lbs)
6mm	6-7
8mm	16-18
10mm	31-32
12mm	56-58
14mm	92-94



Customer Support: info@iarmorauto.com

iArmor®

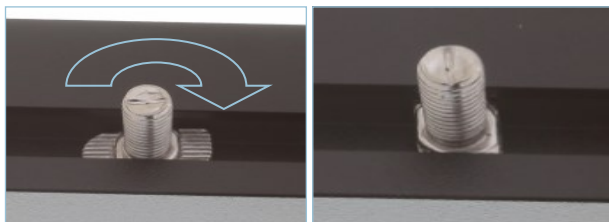
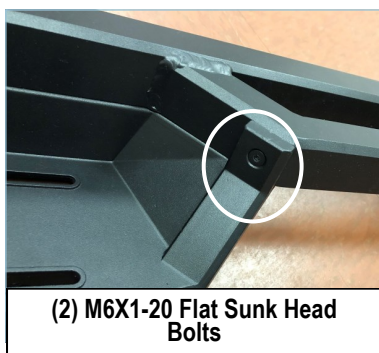


The instruction here is for your reference only. We strongly recommend the professional installer for best result. We are not responsible for any damage caused by the installation.

STEP 1

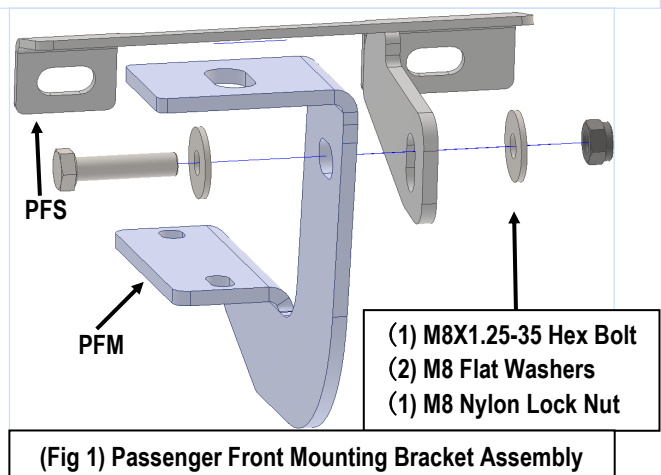
Install the Step Pads onto the step bars with (16) M6X1-20 T-Bolts, (16) M6 Flat Washers, (16) M6 Nylon Lock Nuts and (4) M6X1-20 Flat Sunk Head Bolts.

IMPORTANT: Don't hit the step pad by any metal hammer within step pad installation, or the step pad will be damaged.



STEP 2

Start installation from the passenger side of the vehicle. Assemble the Passenger Front Mounting Bracket (PFM) and Passenger Front Support Bracket (PFS), (Fig 1). Do not tighten hardware at this time.

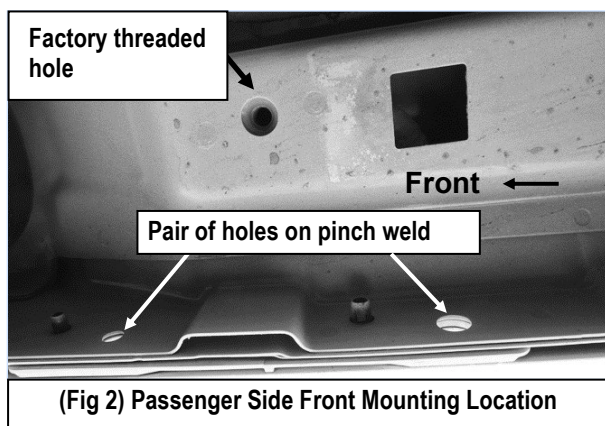


Customer Support: info@iarmorauto.com

iArmor®

STEP 3

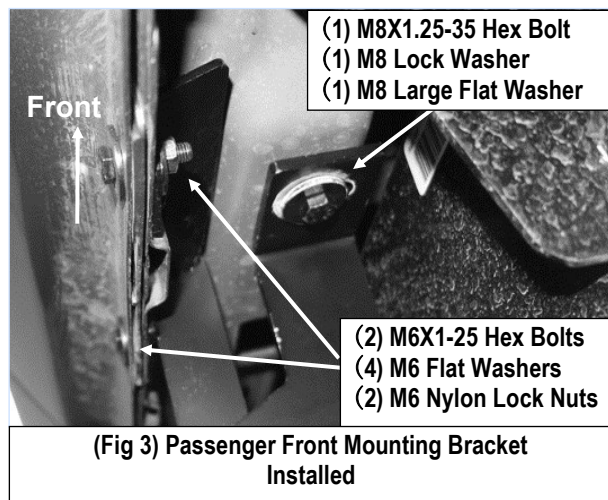
Locate the Passenger Side Front Mounting position on vehicle, i.e. two holes on the pinch weld and one threaded hole on the bottom floor, (Fig 2).



(Fig 2) Passenger Side Front Mounting Location

STEP 4

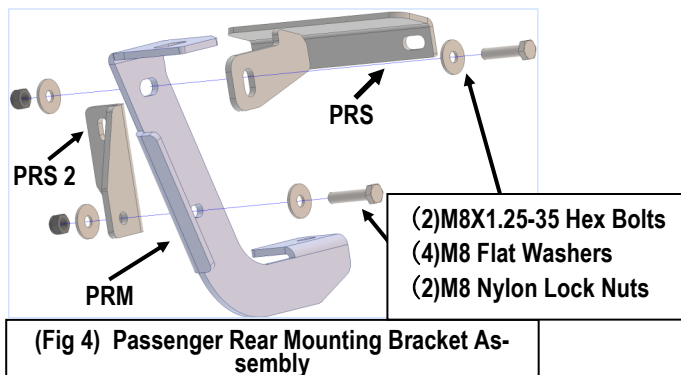
Attach the Assembled Passenger Front Mounting Bracket on the mounting position (Fig 3). Specifically mount **PFM** on the bottom threaded hole with (1) M8X1.25-35 Hex Bolt, (1) M8 Large Flat Washer and (1) M8 Lock Washer; install **PFS** on the pinch weld with (2) M6X1-25 Hex Bolt, (4) M6 Flat Washers, and (2) M6 Nylon Lock Nuts. Leave the hardware loose at this time.



(Fig 3) Passenger Front Mounting Bracket Installed

STEP 5

Assemble the Passenger Rear Mounting Bracket (**PRM**) and Passenger Rear Support Brackets (**PRS & PRS 2**), (Fig 4) with (2) M8X1.25-35 Hex Bolts, (4) M8 Flat Washers and (2) M8X1.25 Nylon Lock Nuts. Do not tighten hardware at this time.

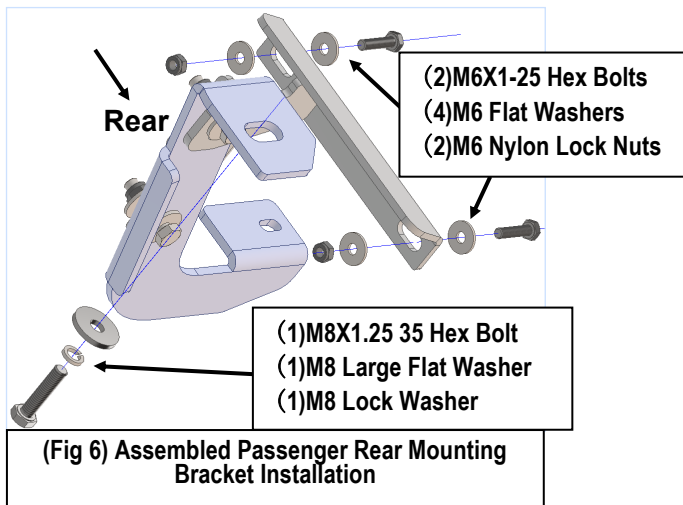
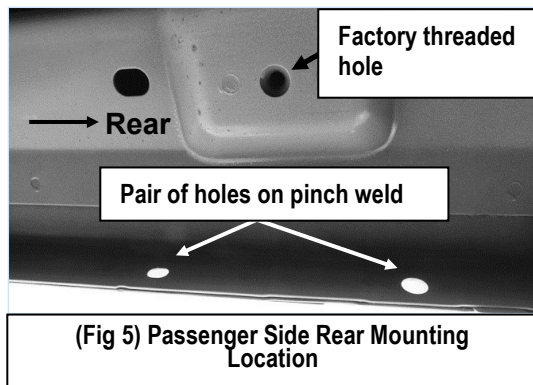


(Fig 4) Passenger Rear Mounting Bracket Assembly

iArmor®

STEP 6

Locate the Passenger Side Rear Mounting position on vehicle (**Fig 5**). Attach the Assembled Passenger Rear Mounting Bracket on the mounting position (**Fig 6**). Mount **PRM** on the bottom threaded hole with (1) M8X1.25-35 Hex Bolt, (1) M8 Large Flat Washer and (1) M8 Lock Washer; install **PRS** on the pinch weld with (2) M6X1-25 Hex Bolt, (4) M6 Flat Washers, and (2) M6 Nylon Lock Nuts. Do not tighten hardware at this time.



STEP 7

Once 2 passenger side brackets are installed, attach the Assembled Passenger Side Step Bar onto the Mounting Brackets with (2) M6X1-20 T-Bolts, (2)M6X1-20 Square Head Bolts, (4) M6 Flat Washers and (4)M6 Nylon Lock Nuts, (**Fig 7**). Do not tighten hardware.

STEP 8

Level and adjust the Assembled Step Bar properly and tighten all hardware.

STEP 9

Repeat Step 2-8 for the Driver Side Step Bar installation.

STEP 10

Do periodic inspections to the installation to make sure that all hardware is secure and tight.

iArmor®

Attention

In order to protect your bars/boards, please use only mild soap/non-abrasive products for cleaning.

(Fig 7) Passenger Side Step Bar Installation

