

## IARMOR EDGE™

PART#: IA-N003

### BEFORE INSTALLATION

REMOVE CONTENTS FROM BOX. VERIFY ALL PARTS ARE PRESENT. READ INSTRUCTIONS CAREFULLY BEFORE STARTING INSTALLATION. ASSISTANCE IS RECOMMENDED. THANK YOU FOR CHOOSING OUR PRODUCT!

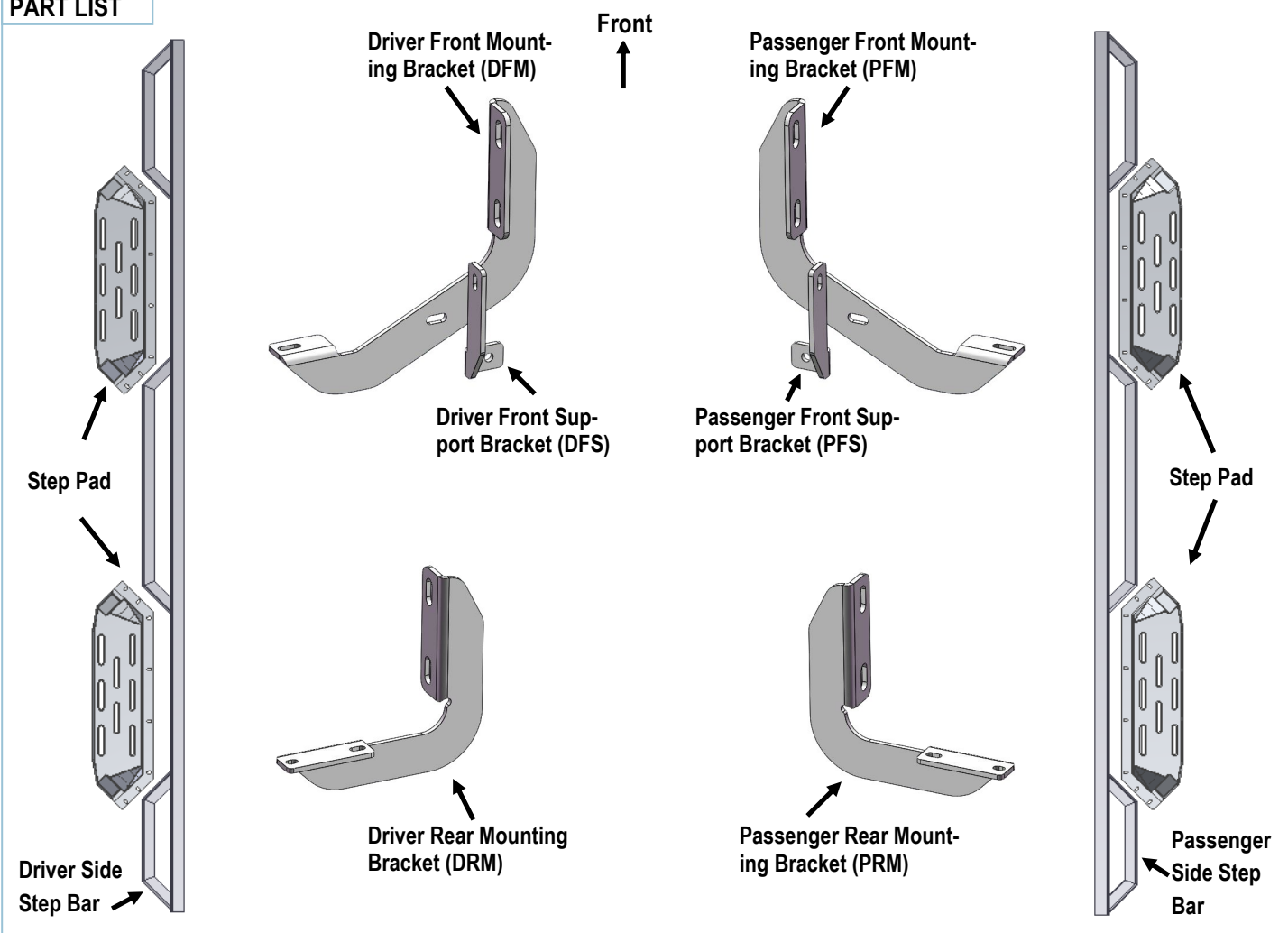
\*DRILLING NOT REQUIRED

\*TRIMMING NOT REQUIRED

### Torque Value

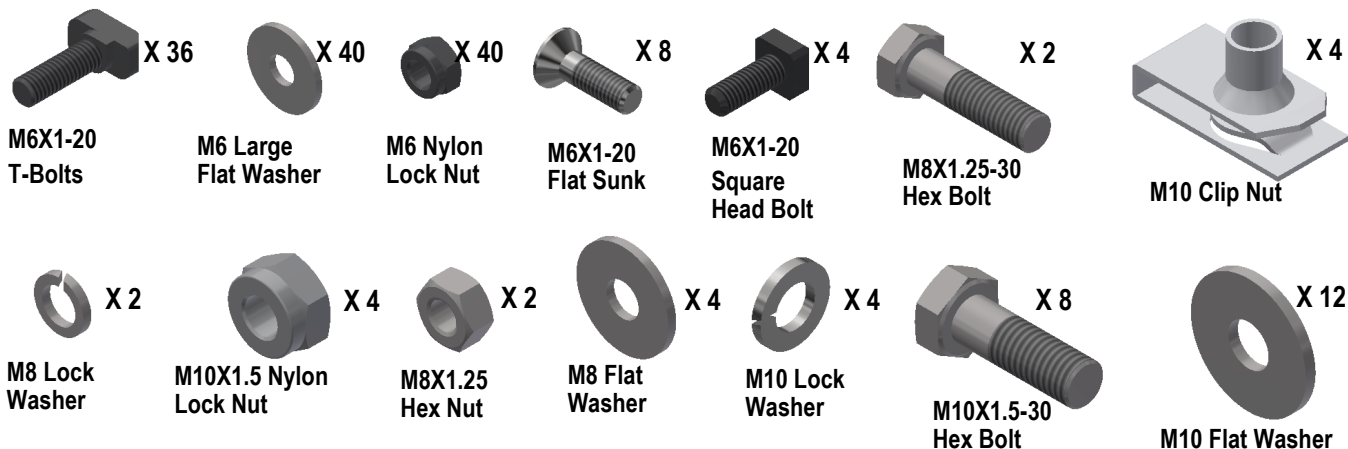
Fastener Size	Tightening Torque (ft-lbs)
6mm	6-7
8mm	16-18
10mm	31-32
12mm	56-58
14mm	92-94

### PART LIST



Customer Support: [info@iarmorauto.com](mailto:info@iarmorauto.com)

# iArmor®



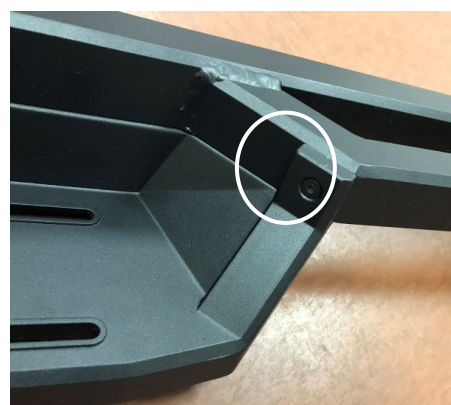
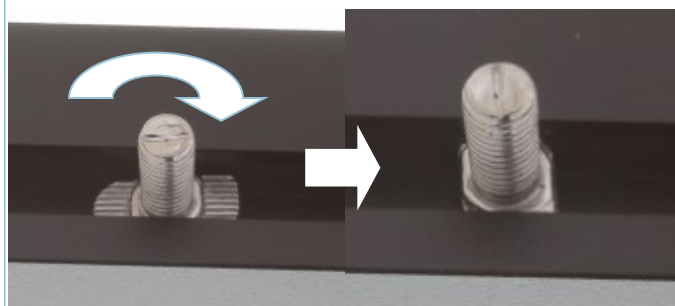
The instruction here is for your reference only. We strongly recommend the professional installer for best result. We are not responsible for any damage caused by the installation.

## STEP 1

Install the Step Pads onto the step bars with (32) M6X1-20 T-Bolts, (32) M6 Large Flat Washers, (32) M6X1 Nylon Lock Nuts and (8) M6X1-20 Flat Sunk Head Bolts.

**IMPORTANT:** Don't hit the step pad by any metal hammer within step pad installation, or the step pad will be damaged.

(8) M6X1-20 T-Bolts  
(8) M6 Large Flat Washers  
(8) M6 Nylon Lock Nuts



M6X1-20 Flat Sunk Head Bolt Location

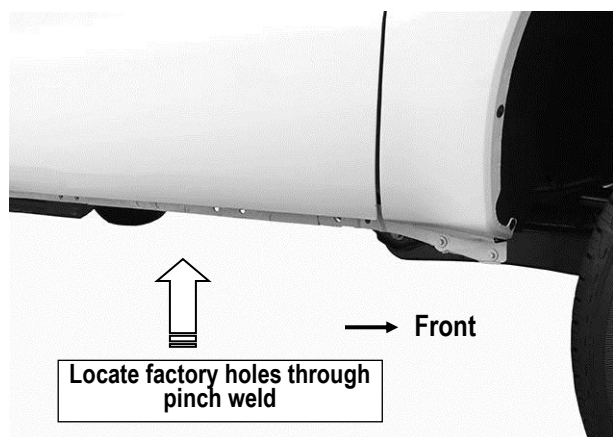
Customer Support: [info@iarmorauto.com](mailto:info@iarmorauto.com)

# iArmor®

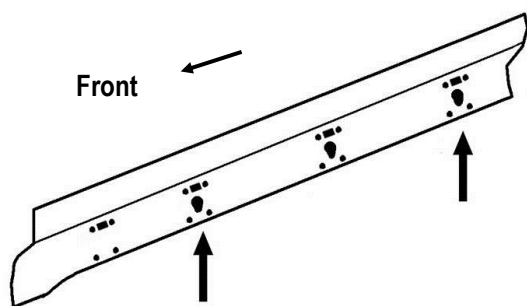
## STEP 2

Start installing from the passenger/right side of the vehicle, locate the (4) pairs of factory holes along the pinch weld (**Fig 1 & 2**).

**NOTE:** There are (4) mounting locations along the inner body panel. Running Board installation will use the 2nd and 4th mounting locations, (**Fig 1 & 2**).



(Fig 1) Passenger Side Pinch Weld Mounting Locations



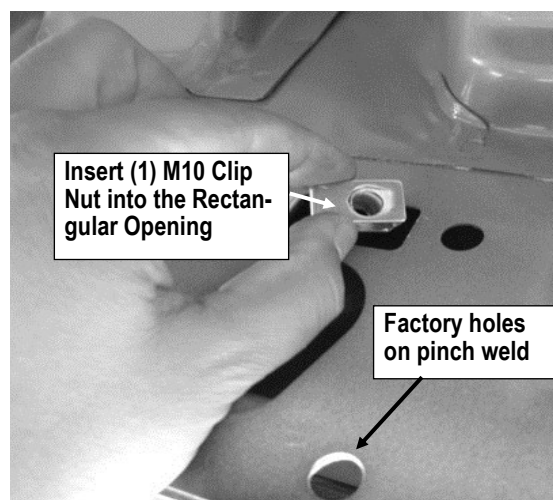
(Fig 2) Passenger Inner Body Panel Mounting Locations

## STEP 3

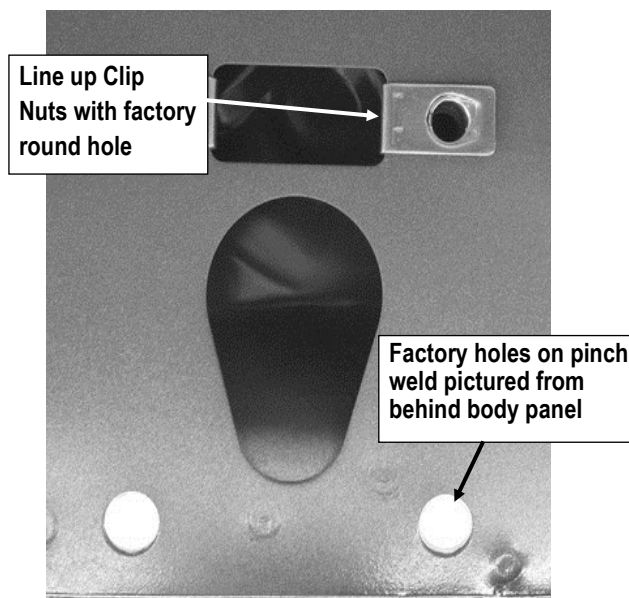
Select (1) M10 Clip Nut. Insert Clip Nut into the rectangular opening. Line up the threaded hole on the clip nut with the

round hole next to the rectangular opening.

**NOTE:** The threaded nut on the Clip Nut must go towards the inside of the side panel, (**Fig 3 & 4**).



(Fig 3) Typical Mounting Location

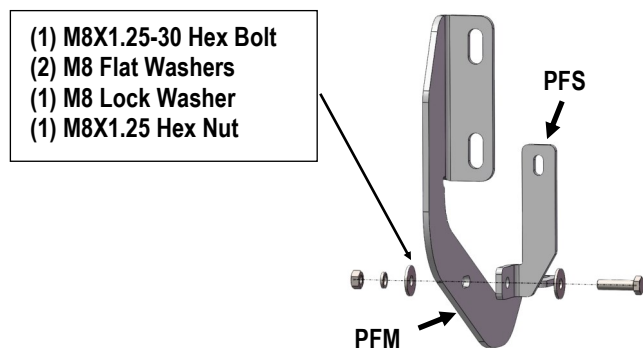


(Fig 4) M10 Clip Nut Installed

# iArmor®

## STEP 4

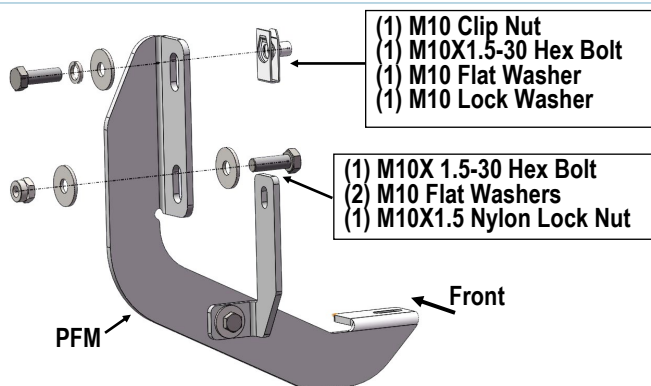
Assemble the Passenger Front Mounting Bracket (**PFM**) and Passenger Front Support Bracket (**PFS**) with (1) M8X1.25-30 Hex Bolt, (2) M8 Flat Washer, (1) M8 Lock Washer and (1) M8X1.25 Hex Nut. (**Fig 5**) Don't fully tighten.



(Fig 5) Passenger Front Mounting Bracket Assembly

## STEP 5

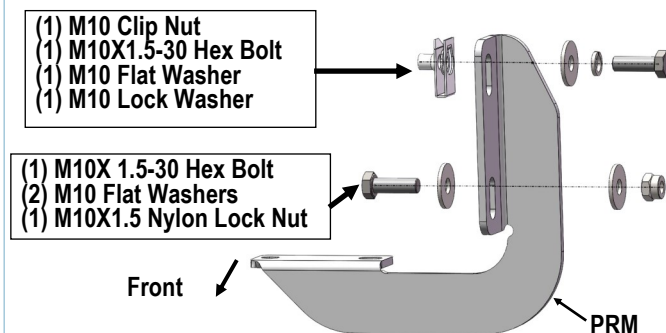
Attach the Assembled Passenger Front Mounting Bracket to the installed M10 Clip Nuts and pinch weld with the included (2) M10X1.5-30 Hex Bolts, (1) M10 Lock Washer, (3) M10 Flat Washers and (1) M10X1.5 Nylon Lock Nut, (**Fig 6**).



(Fig 6) Passenger Front Mounting Bracket Installed

## STEP 6

Move to the Passenger Side Rear Mounting Location. Attach the Passenger Rear Mounting Bracket (**PRM**) to the installed M10 Clip Nut on rocker pane and pinch weld with (2) M10X1.5-30 Hex Bolts, (1) M10 Lock Washer, (3) M10 Flat Washers and (1) M10X1.5 Nylon Lock Nut, (**Fig 7**).



(Fig 7) Passenger Rear Mounting Bracket Installed

## STEP 7

Once all (2) Brackets have been installed, attach the Assembled Passenger Step Bar onto the brackets with (2) M6X1-20 T-Bolts, (2) M6X1-20 Square Head Bolts, (4) M6 Large Flat Washers and (4) M6X1 Nylon Lock Nuts, (**Fig 8**). Do not tighten hardware at this time.

## STEP 8

Level and adjust the Step Bar and tighten all hardware. Repeat **Steps 3-7** for driver/left Step Bar installation.

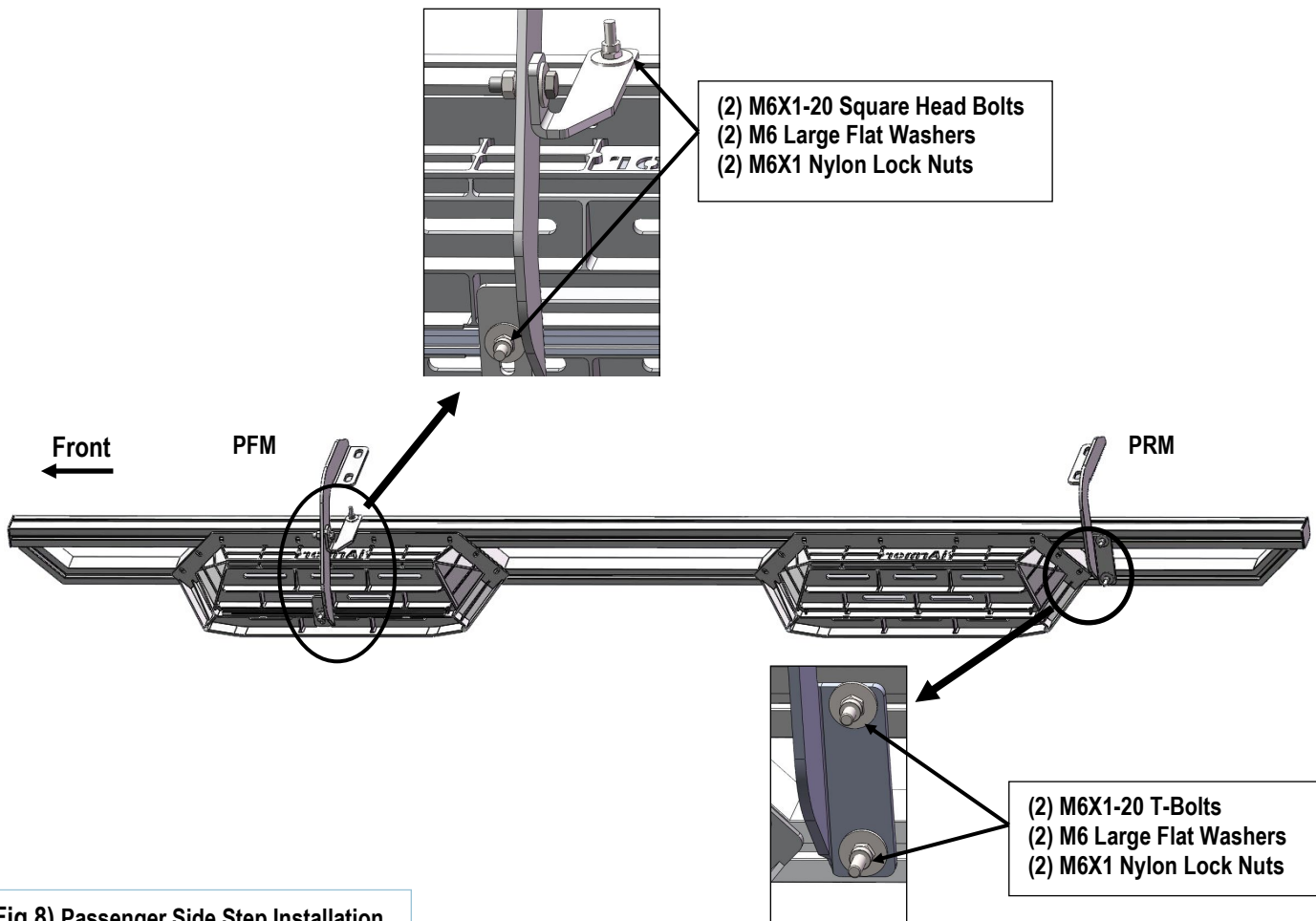
# iArmor®

## STEP 9

Do periodic inspections to the installation to make sure that all hardware is secure and tight.

### Attention

In order to protect your bars/boards, please use only mild soap/non-abrasive products for cleaning.



(Fig 8) Passenger Side Step Installation