

IARMOR EDGE™

PART#: IA-N176

BEFORE INSTALLATION

REMOVE CONTENTS FROM BOX. VERIFY ALL PARTS ARE PRESENT. READ INSTRUCTIONS CAREFULLY BEFORE STARTING INSTALLATION. ASSISTANCE IS RECOMMENDED. THANK YOU FOR CHOOSING OUR PRODUCT!

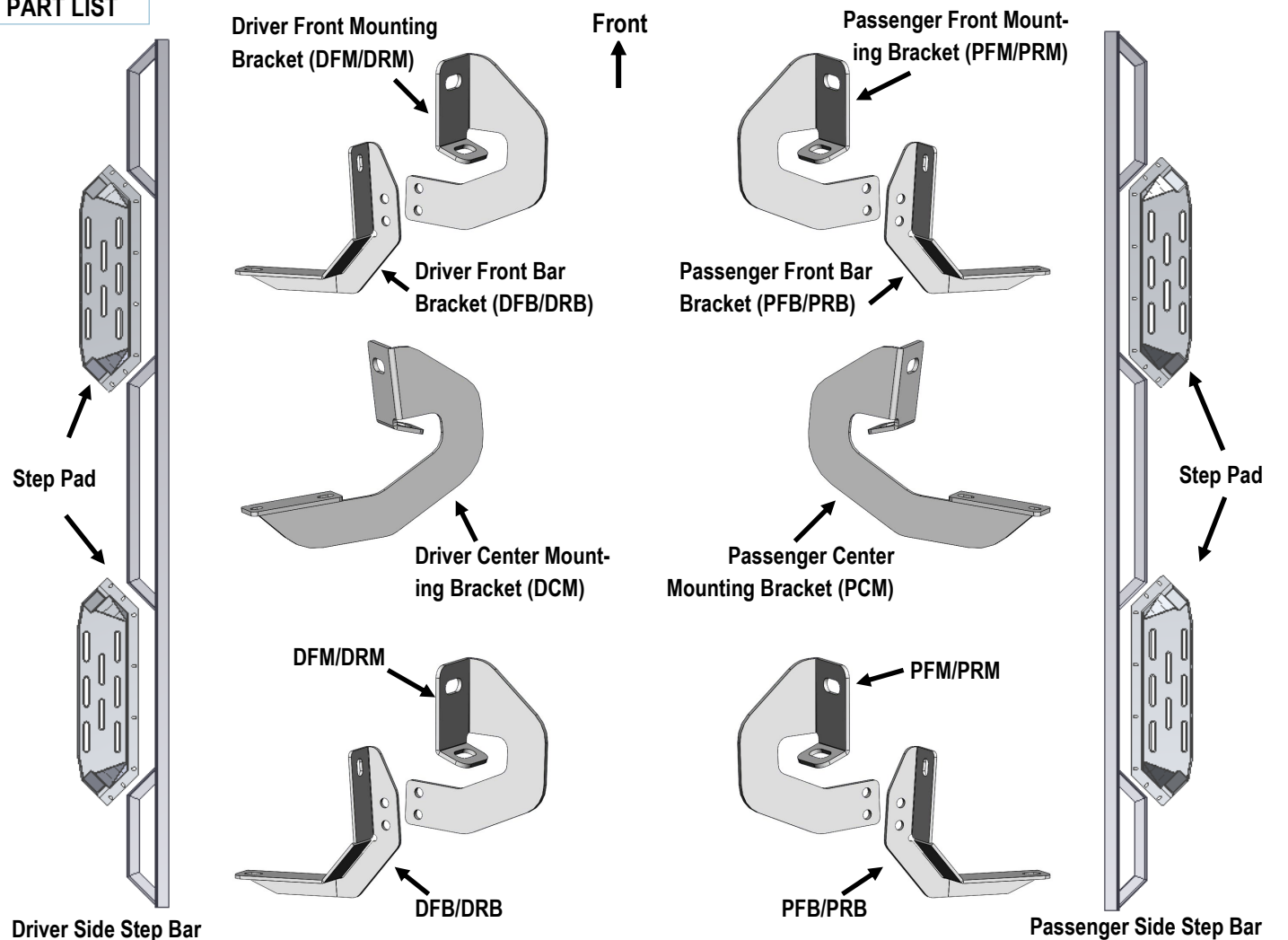
*DRILLING NOT REQUIRED

*TRIMMING NOT REQUIRED

Torque Value

Fastener Size	Tightening Torque (ft-lbs)
6mm	6-7
8mm	16-18
10mm	31-32
12mm	56-58
14mm	92-94

PART LIST



iArmor®



X6

M8X1.25-30mm
Hex Bolt



X6

M8X1.25-25mm
Hex Bolt



X12

M8 Flat Washer



X6

M8 Large Flat Washer



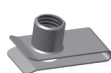
X12

M8 Lock Washer



X6

M8X1.25 Hex Nut



X6

M8 Clip Nut



X8

M8X1.25-20mm Inner Hex Bolt



X8

M8X1.25 Hex Flange Nut



X36

M6X1-20mm
T-Bolt



X8

M6X1-20mm Square
Head Bolt



X44

M6 Large Flat
Washer



X44

M6X1 Nylon
Lock Nut



X8

M6X1-20mm Flat
Sunk Head Bolt

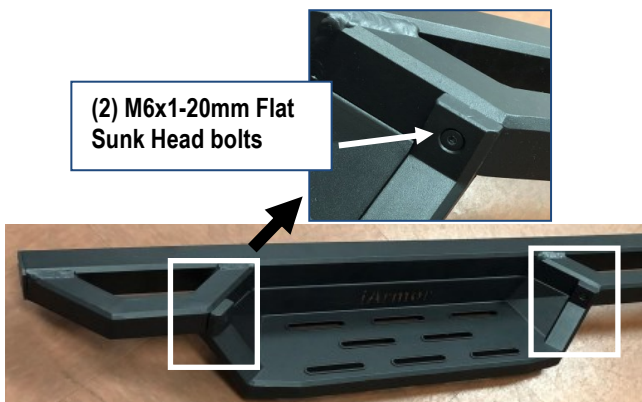
The instruction here is for your reference only. We strongly recommend the professional installer for best result. We are not responsible for any damage caused by the installation.

STEP 1

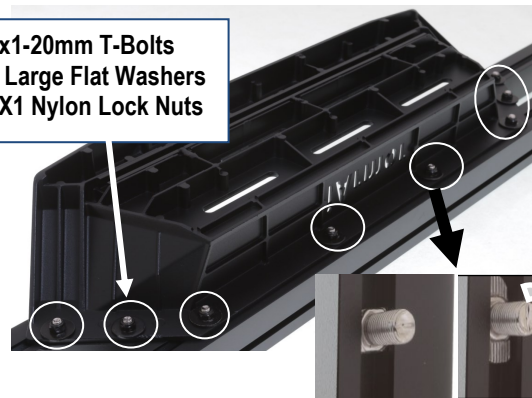
Install the Step Pads onto the step bars with (32) M6x1-20mm T-Bolts, (32) M6 Large Flat Washers, (32) M6X1Nylon Lock Nuts and (8) M6X1-20mm Flat Sunk Head Bolts.

IMPORTANT: Don't hit the step pad by any metal hammer within step pad installation, or the step pad will be damaged.

(2) M6x1-20mm Flat
Sunk Head bolts



(8) M6x1-20mm T-Bolts
(8) M6 Large Flat Washers
(8) M6X1 Nylon Lock Nuts

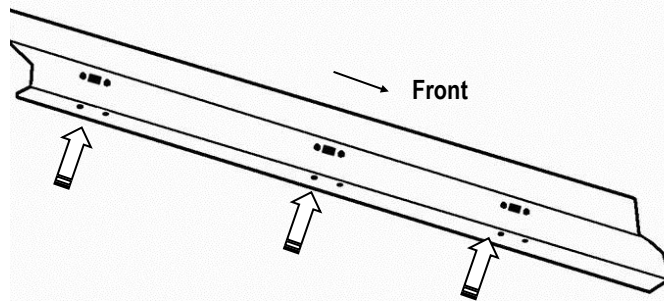


STEP 2

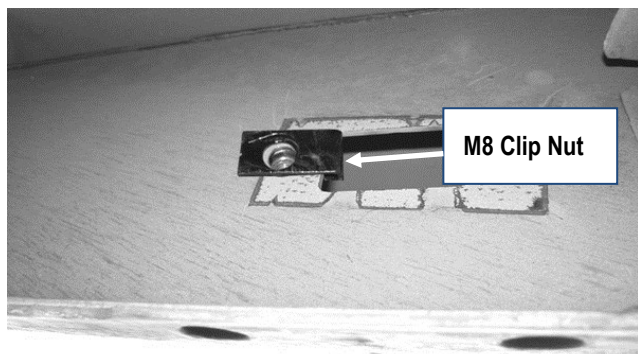
Starting on the driver side of the vehicle, locate the (2) holes in the bottom of the body panel, (pinch weld), toward the front tire, (Fig 1). Next locate the rectangular opening and (2) small holes in the inner body panel directly above the holes in the pinch weld, (Fig 1 & 2).

NOTE: The holes in the inner panel may be covered with sealing tape or insulation.

iArmor®



(Fig 1) Driver Side Inner Body Panel Mounting Locations



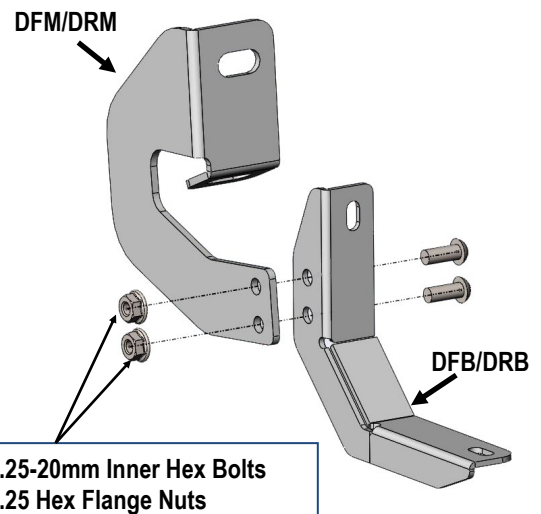
(Fig 2) Slide M8 Clip Nuts Over Holes

STEP 3

Slide (1) M8 Clip Nut into the rectangular opening with the nut towards the inside. Line up the threaded nut on the clip with the round hole, (Fig 2).

STEP 4

Assemble Driver Front Mounting Bracket (DFM/DRM) and Driver Front Bar Bracket (DFB/DRB) with (2) M8X1.25-20mm Inner Hex Bolts and (2) M8X1.25 Hex Flange Nuts, (Fig 3). Do not fully tighten hardware at this time.

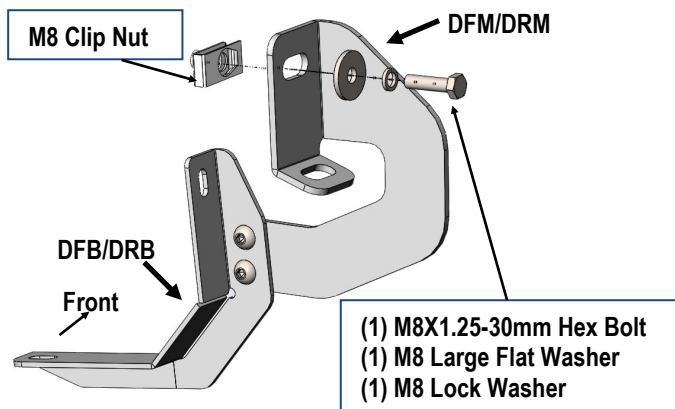


(Fig 3) Driver Side Front Brackets Assembly

STEP 5

Attach the Assembled Driver Front Mounting Bracket to the (1) M8 Clip Nut with the included (1) M8x1.25-30mm Hex Bolt, (1) M8 Lock Washer and (1) M8 Large Flat Washer, (Fig 4). Do not fully tighten hardware at this time.

NOTE: Depending on model and year, the brake cable may be run on the inside or outside of the Bracket.



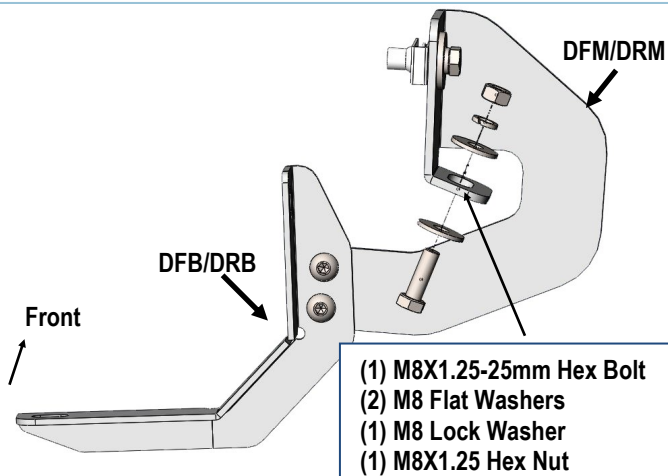
(Fig 4) Assembled Driver Front Mounting Bracket Installed

iArmor®

STEP 6

Align the lower hole on the Front Mounting Bracket with the (1) hole in the pinch weld. Attach the Assembled Driver Front Mounting Bracket to the pinch weld with (1) M8x1.25-25mm Hex Bolt, (2) M8 Flat Washers, (1) M8 Lock Washer and (1) M8X1.25 Hex Nut, (Fig 5). Do not fully tighten hardware at this time.

NOTE: Insert the bolt up from the bottom of the pinch weld and through the Bracket.



(Fig 5) Assembled Driver Front Mounting Bracket Installed

STEP 7

Move along the cab to the center mounting location, (Fig 1). Refer to **Step 5 & 6** for installing Driver Center Mounting Bracket (DCM), (Fig6). Do not tighten hardware at this time.

- (1) M8X1.25-30mm Hex Bolt
- (1) M8 Large Flat Washer
- (1) M8 Lock Washer

M8 Clip Nut

Front

DCM

- (1) M8X1.25-25mm Hex Bolt
- (2) M8 Flat Washers
- (1) M8 Lock Washer
- (1) M8X1.25 Hex Nut

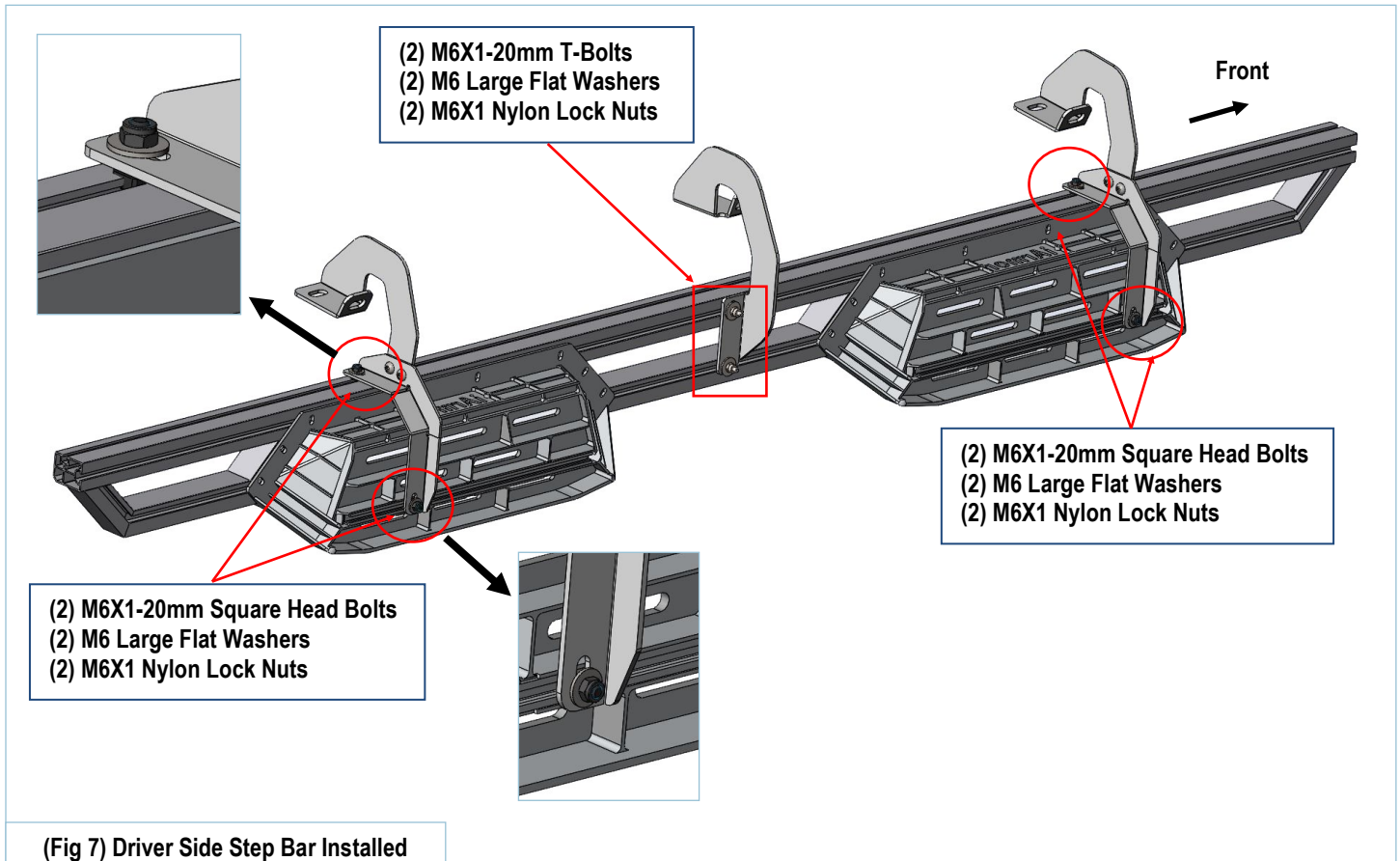
(Fig 6) Driver Center Mounting Bracket (DCM) Installed

STEP 8

Repeat **Steps 3-6** to install the Driver Side Rear Brackets. Do not fully tighten hardware at this time.

STEP 9

Once all (3) driver side mounting brackets are installed, attach the Assembled Driver Side Step Bar onto the brackets with (2) M6X1-20mm T-Bolts, (4) M6X1-20mm Square Head Bolts, (6) M6 Large Flat Washers and (6) M6X1 Nylon Lock Nuts, (Fig 7). Do not fully tighten hardware.



STEP 10

Properly level and adjust the Step Bar and fully tighten all hardware.

STEP 11

Move to the passenger side of the vehicle. Repeat **Steps 2-10** to install passenger side step bar.

Attention

Do periodic inspections to the installation to make sure that all hardware is secure and tight.

In order to protect your bars/boards, please use only mild soap/non-abrasive products for cleaning.