

IARMOR EDGE™

PART#: IA-N175

BEFORE INSTALLATION

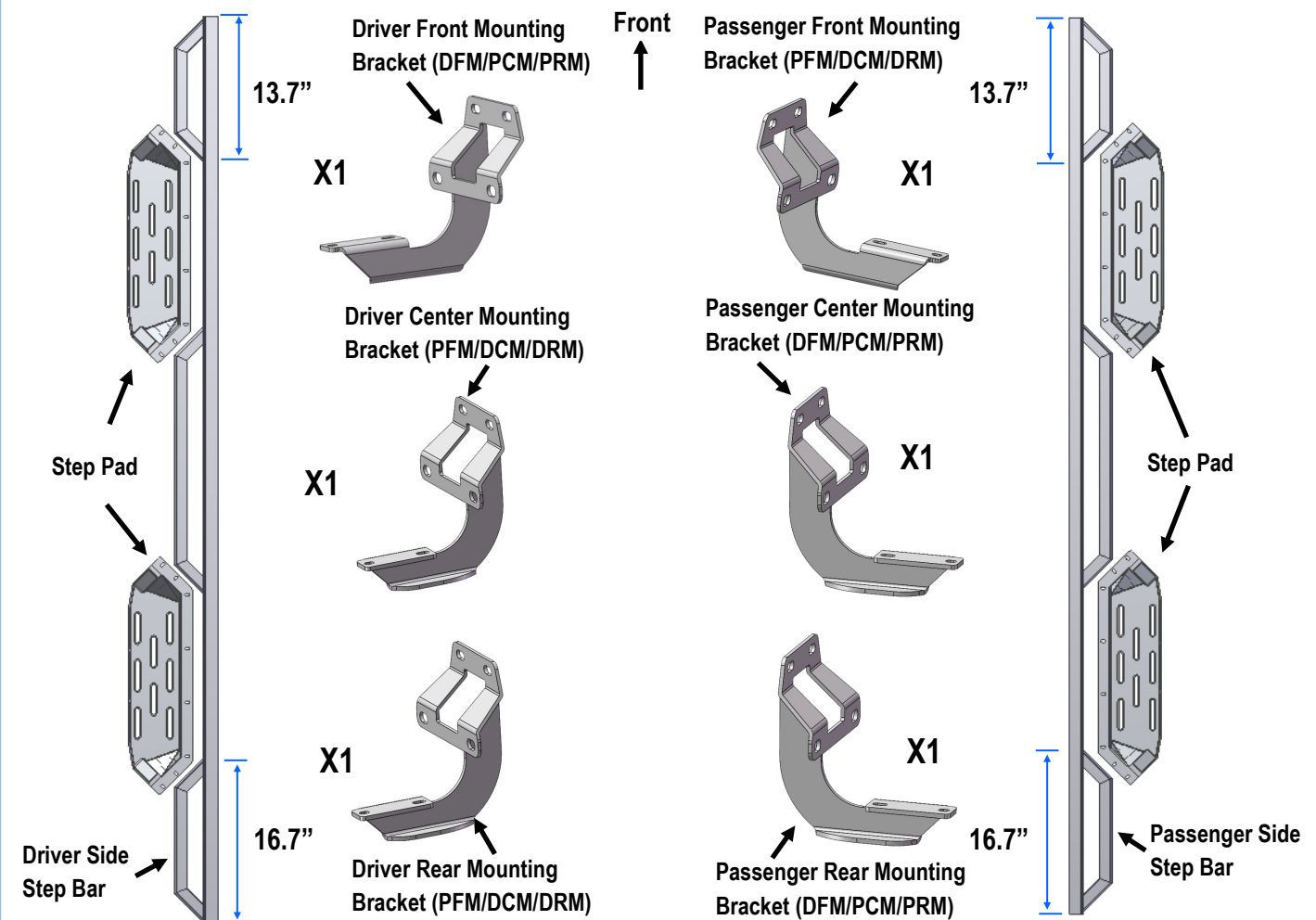
REMOVE CONTENTS FROM BOX. VERIFY ALL PARTS ARE PRESENT. READ INSTRUCTIONS CAREFULLY BEFORE STARTING INSTALLATION. ASSISTANCE IS RECOMMENDED. THANK YOU FOR CHOOSING OUR PRODUCT!

*DRILLING NOT REQUIRED

*TRIMMING NOT REQUIRED

Fastener Size	Tightening Torque (ft-lbs)
6mm	6-7
8mm	16-18
10mm	31-32
12mm	56-58
14mm	92-94

PART LIST



iArmor®



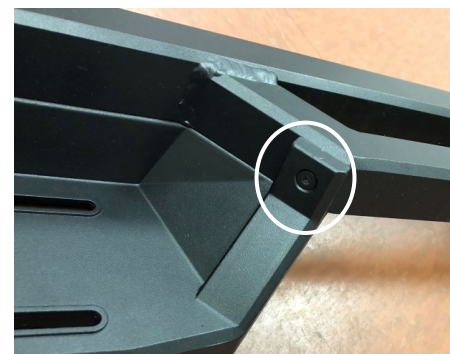
The instruction here is for your reference only. We strongly recommend the professional installer for best result. We are not responsible for any damage caused by the installation.

STEP 1

Install the Step Pads onto the step bars with (32) M6x1-20mm T-Bolts, (32) M6 Large Flat Washers, (32) M6X1 Nylon Lock Nuts and (8) M6X1-20mm Flat Sunk Head Bolts.

IMPORTANT: Don't hit the step pad by any metal hammer within step pad installation, or the step pad will be damaged.

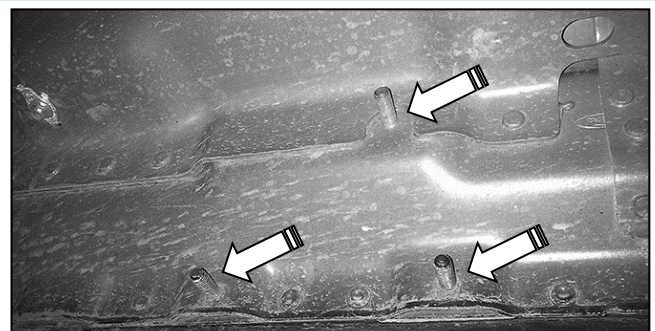
(8) M6X1-20 T-Bolts
(8) M6 Flat Washers
(8) M6 Nylon Lock Nuts



(2) M6X1-20 Flat Sunk Head Bolts

STEP 2

Start the installation from the driver/left side of the vehicle. Locate the Driver Side Mounting Locations along the inner side of the body panel, (Fig 1).

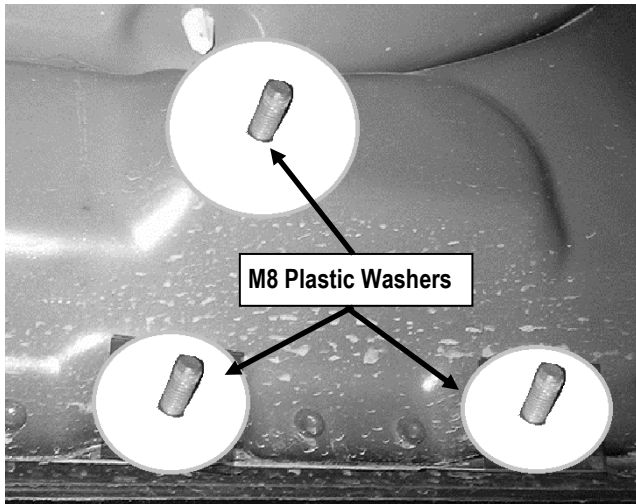


(Fig 1) Typical mounting location

iArmor®

STEP 3

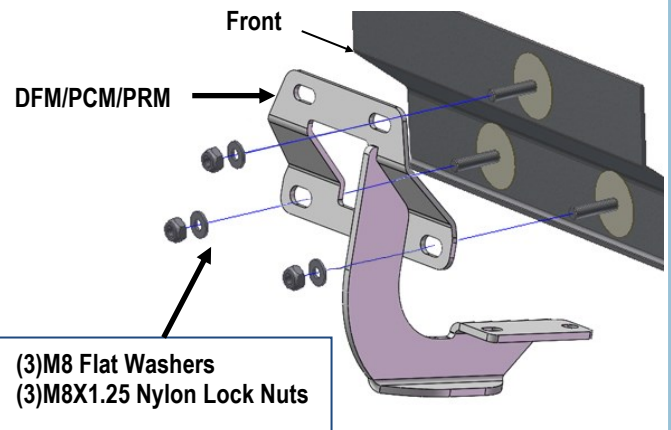
Slide (1) M8 Plastic Washer over each of the (3) factory mounting studs on the body panel, (Fig 2). **IMPORTANT:** The Plastic Washers are designed to prevent corrosion between the aluminum body panel and the steel mounting brackets. **Do not install the Brackets without the Plastic Washers.**



(Fig 2) Thread M8 Plastic Washers onto all mounting studs

STEP 4

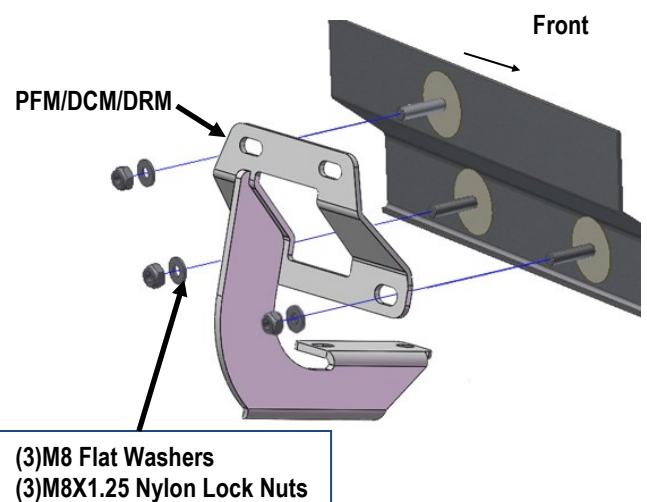
Attach the Driver Front Mounting Bracket (DFM/PCM/PRM) to the (3) factory studs with (3) M8 Flat Washers and (3) M8X1.25 Nylon Lock Nuts, (Fig 3). Leave bracket loose at this time.



(Fig 3) Driver Front Mounting Bracket Installed

STEP 5

Repeat **Step 4** to install the Driver center Mounting Bracket and Driver Rear Mounting Bracket (PFM/DCM/DRM), (Fig 4).

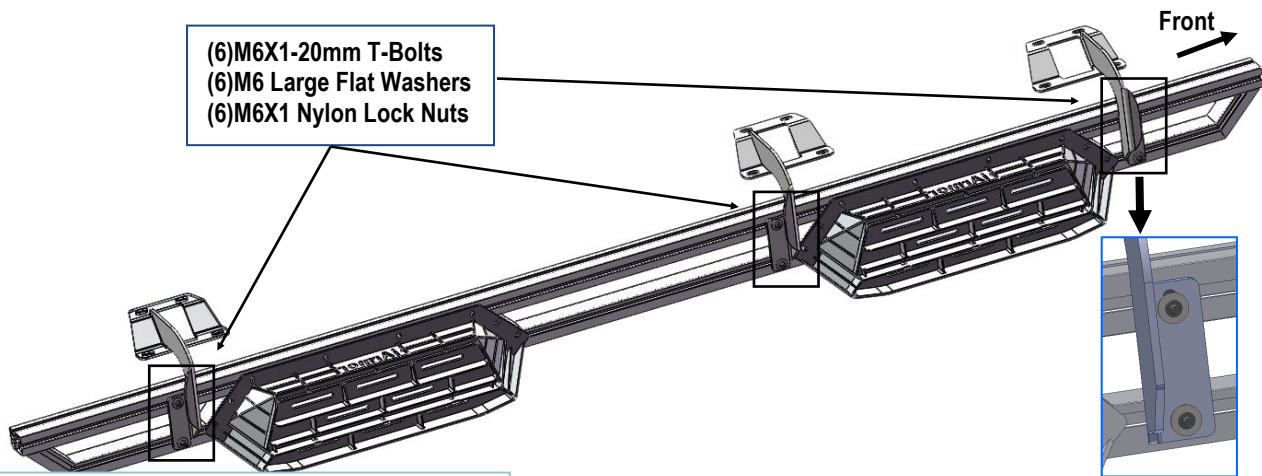


(Fig 4) Driver Center/ Rear Mounting Bracket Installed

iArmor®

STEP 6

Once all (3) Brackets have been installed, attach the Assembled Driver Side Step Bar to the Mounting Brackets with (6) M6X1-20mm T-Bolts, (6) M6 Large Flat Washers & (6) M6X1 Nylon Lock Nuts (**Fig 5**). Do not tighten hardware at this time.



(Fig 5) Assembled Driver Side Step Bar Installed

STEP 7

Properly level and adjust the Step Bar and fully tighten all hardware.

STEP 8

Move to the passenger side of the vehicle. Repeat **Steps 2-7** to install passenger side step bar.

Attention

Do periodic inspections to the installation to make sure that all hardware is secure and tight.

In order to protect your bars/boards, please use only mild soap/non-abrasive products for cleaning.