

IARMOR EDGE™

PART#: IA-N002

BEFORE INSTALLATION

REMOVE CONTENTS FROM BOX. VERIFY ALL PARTS ARE PRESENT. READ INSTRUCTIONS CAREFULLY BEFORE STARTING INSTALLATION. ASSISTANCE IS RECOMMENDED. THANK YOU FOR CHOOSING OUR PRODUCT!

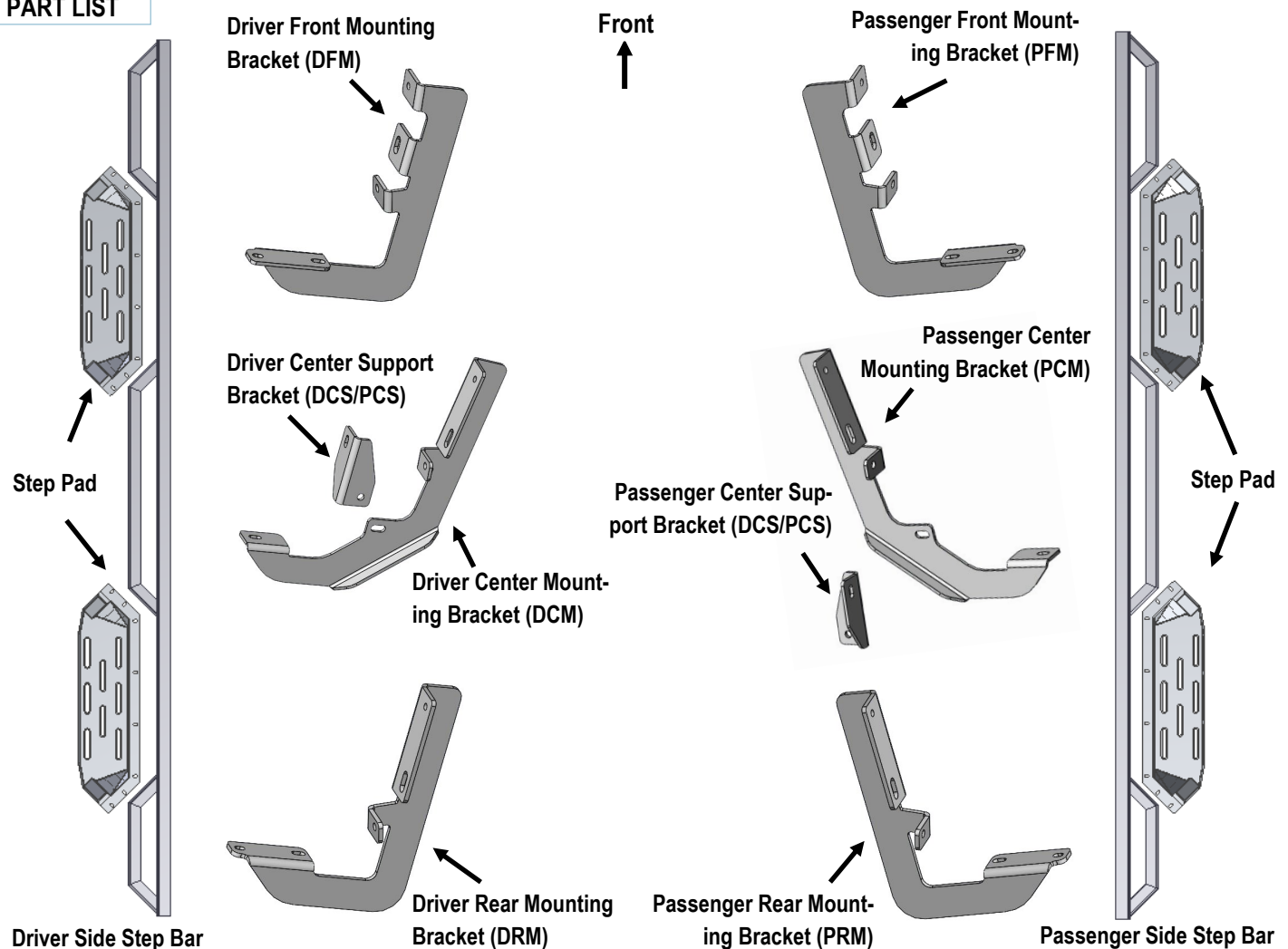
***DRILLING IS REQUIRED**

***TRIMMING NOT REQUIRED**

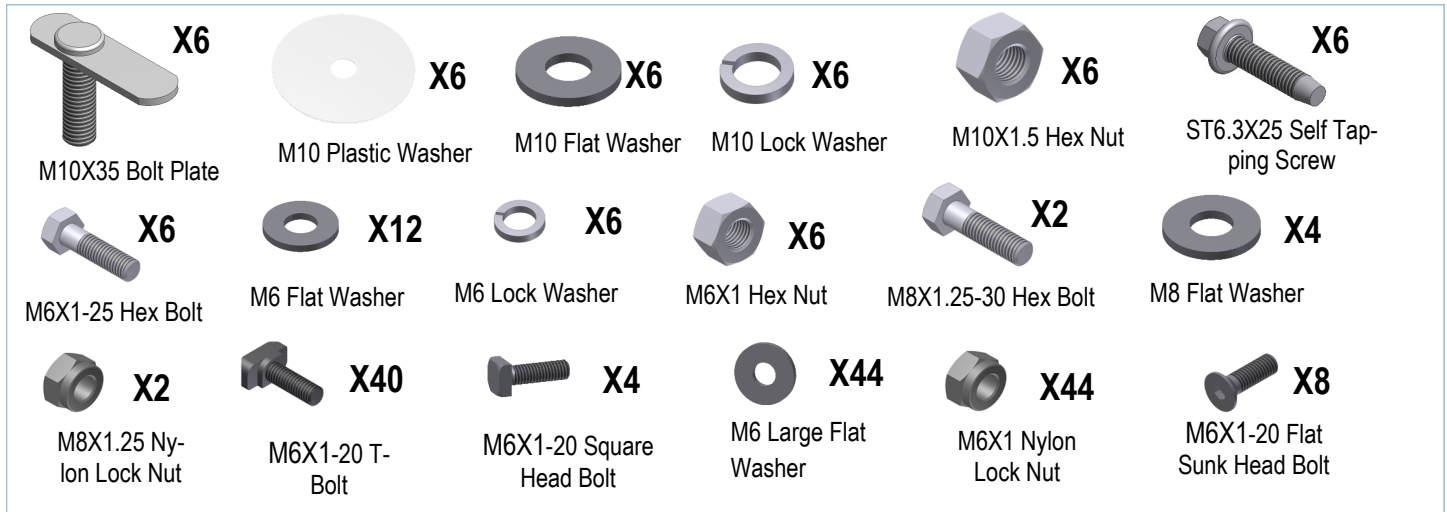
Torque Value

Fastener Size	Tightening Torque (ft-lbs)
6mm	6-7
8mm	16-18
10mm	31-32
12mm	56-58
14mm	92-94

PART LIST



iArmor®

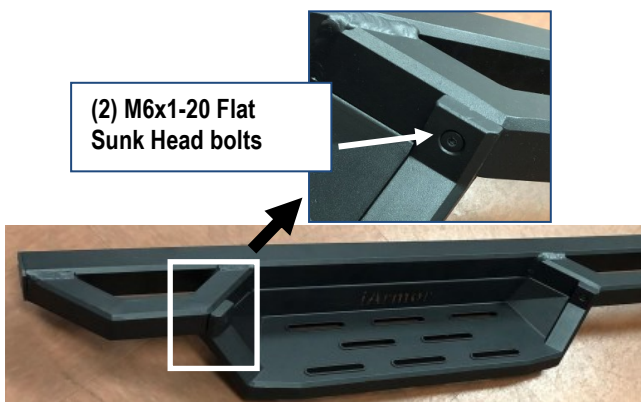


The instruction here is for your reference only. We strongly recommend the professional installer for best result. We are not responsible for any damage caused by the installation.

STEP 1

Install the Step Pads onto the step bars with (32) M6X1-20 T-Bolts, (32) M6 Large Flat Washers, (32) M6X1Nylon Lock Nuts and (8) M6X1-20 Flat Sunk Head Bolts.

IMPORTANT: Don't hit the step pad by any metal hammer within step pad installation, or the step pad will be damaged.



STEP 2

Starting from the front location of the driver side, locate the (2) oval holes in the inner body panel. Remove the tape covering the second factory hole (**Fig 1**). Thread (1) M10 Plastic Washer onto (1) M10X35 Bolt Plate, insert the Bolt Plate into the factory hole on the rocker panel (**Fig 2**). Hold the Bolt Plate in place with one hand and continue to thread the M10 Plastic Washer down against the sheet metal until it holds the Bolt Plate in place (**Fig 2**).

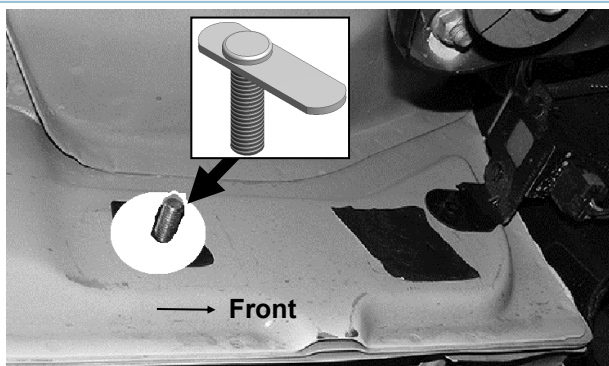
IMPORTANT: The M10 Plastic Washer is designed to prevent the Bolt Plate from falling into the body panel and to aid Bracket installation.

iArmor®

Remove sealing tape to uncover mounting hole. Insert M10X35 Bolt Plate with M10 Plastic Washer



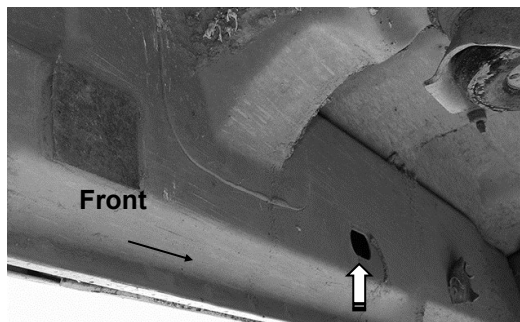
(Fig 1) Driver Side Front Mounting Location



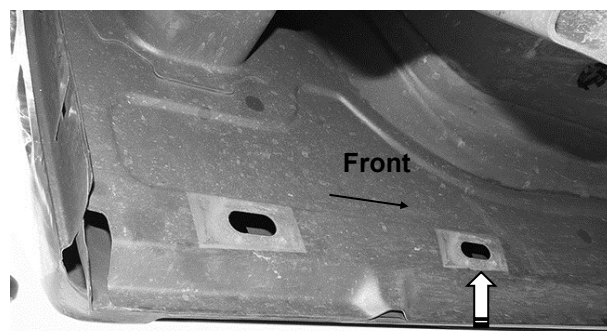
(Fig 2) Insert Bolt Plate into the Oval Hole

STEP 3

Along the inner body panel, identify the Driver Side Center and Rear Mounting Locations (Fig 3 & 4). Repeat **STEP 2**, insert the M10X35 Bolt Plates into the oval holes on the mounting locations. Thread the M10 Plastic Washers down against the sheet metal to hold the Bolt Plates in place.



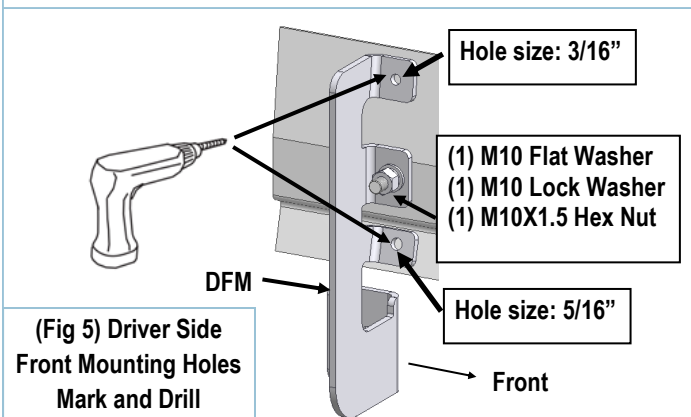
(Fig 3) Driver Side Center Mounting Location



(Fig 4) Driver Side Rear Mounting Location

STEP 4

Attach the Driver Front Mounting Bracket onto the M10X35 Bolt Plate on the Driver Side Front Mounting Location with (1) M10 Flat Washer, (1) M10 Lock Nut & (1) M10X1.5 Hex Nut. Mark holes. Remove the bracket and Drill holes as shown (Fig 5). **NOTE:** Be sure to use the correct drill bit size for each hole.

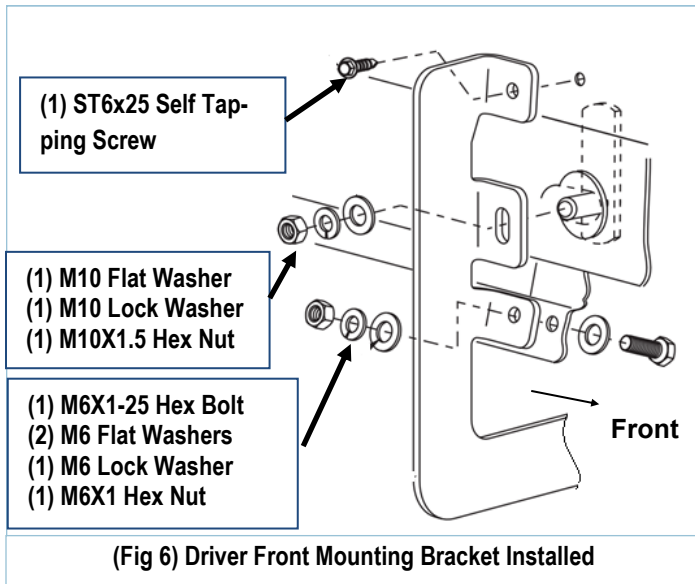


(Fig 5) Driver Side Front Mounting Holes Mark and Drill

STEP 5

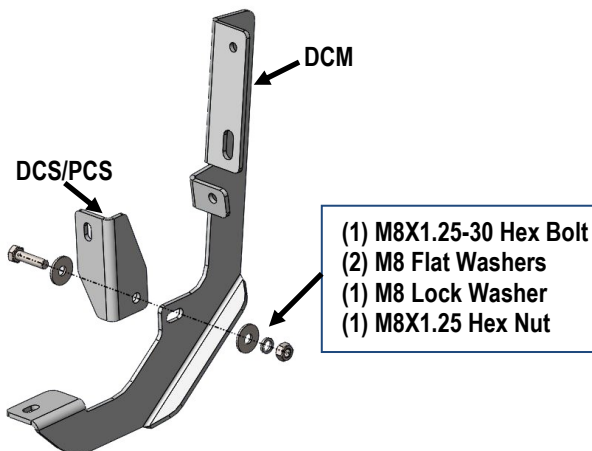
Attach the Driver Front Mounting Bracket to the Bolt Plate, and secure the mounting bracket as shown on Fig 6. Don't fully tighten at this time.

iArmor®



STEP 6

Select Driver Center Mounting Bracket (**DCM**) and Driver Center Support Bracket (**DCS/PCS**), assemble them with (1) M8X1.25-30 Hex Bolt, (2) M8 Flat Washers, (1) M8 Lock Washer and (1) M8X1.25 Hex Nut. Do not tighten hardware at this time.



(Fig 7) Driver Center Brackets Assembly

STEP 7

Repeat **Steps 2-6** to install the Driver Side Center & Rear Mounting Brackets to the body panel. Do not fully tighten hardware at this time.

STEP 8

Once all (3) driver side mounting brackets are installed, attach the Assembled Driver Side Step Bar onto the brackets with (4) M6X1-20 T-Bolts, (2) M6X1-20 Square Head Bolts, (6) M6 Large Flat Washers and (6) M6x1 Nylon Lock Nuts, (**Fig 8**). Do not fully tighten hardware.

STEP 9

Properly level and adjust the Step Bar and fully tighten all hardware.

STEP 10

Move to the passenger side of the vehicle. Repeat **Steps 2-9** to install passenger side step bar.

Attention

Do periodic inspections to the installation to make sure that all hardware is secure and tight.

In order to protect your bars/boards, please use only mild soap/non-abrasive products for cleaning.

iArmor®

