

iArmor®

iArmor® by APS

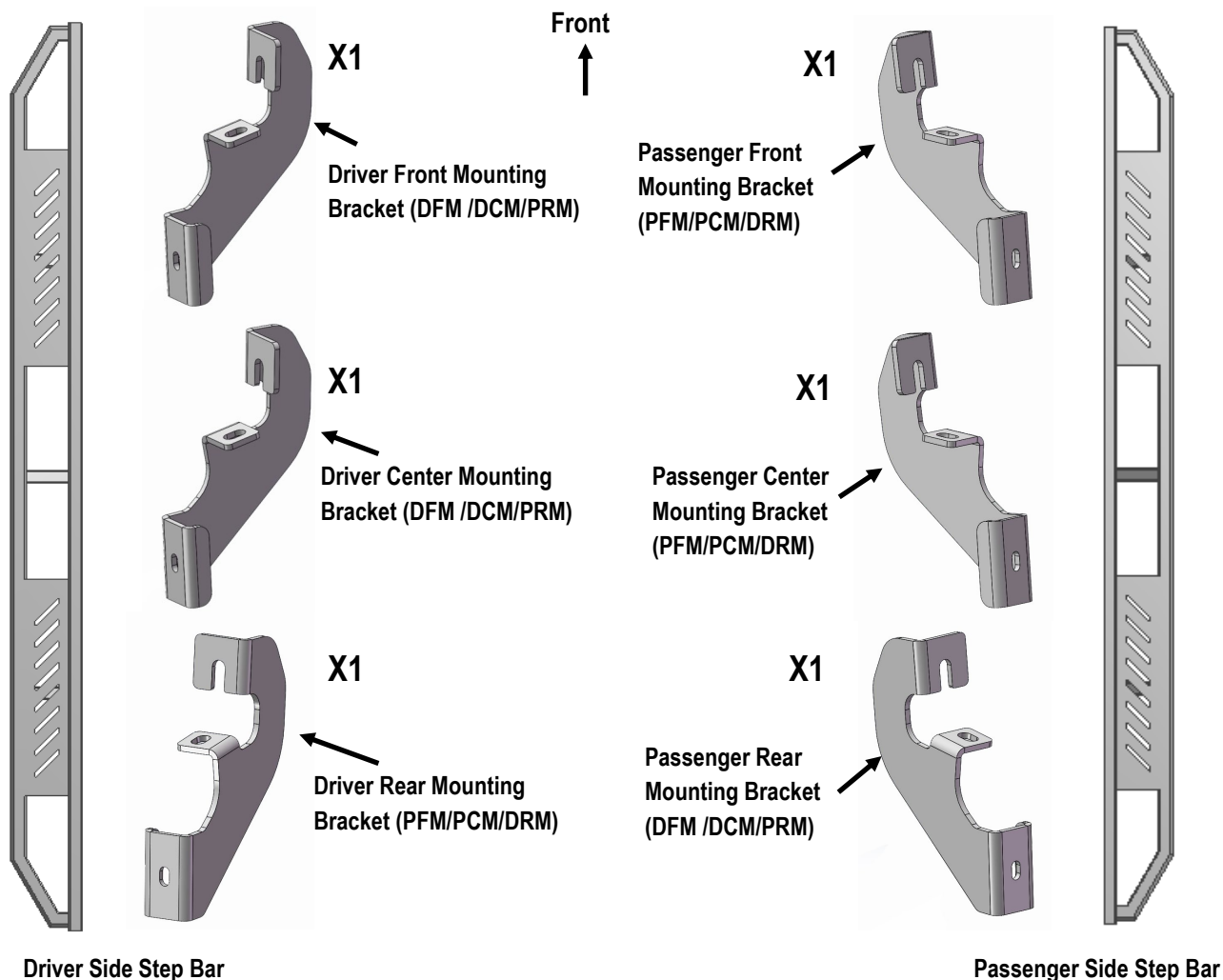
PART#: IA-S198

BEFORE INSTALLATION

REMOVE CONTENTS FROM BOX. VERIFY ALL PARTS ARE PRESENT. READ INSTRUCTIONS CAREFULLY BEFORE STARTING INSTALLATION. ASSISTANCE IS RECOMMENDED. THANK YOU FOR CHOOSING OUR PRODUCT!

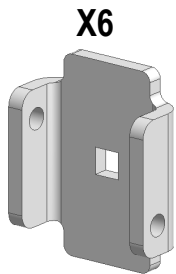
Fastener Size	Tightening Torque (ft-lbs)
6mm	6-7
8mm	16-18
10mm	31-32
12mm	56-58
14mm	92-94

PART LIST



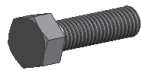
Customer Support: info@iarmorauto.com

iArmor®



X6

U Bracket



X12

M8X1.25-30mm Hex Bolt



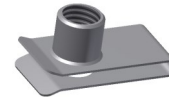
X18

M8 Large Flat Washer



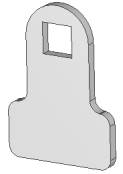
X18

M8 Lock Washer



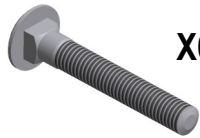
X12

M8 Clip Nut



X12

Spacer



X6

M8X1.25-55mm Carriage Bolt



X6

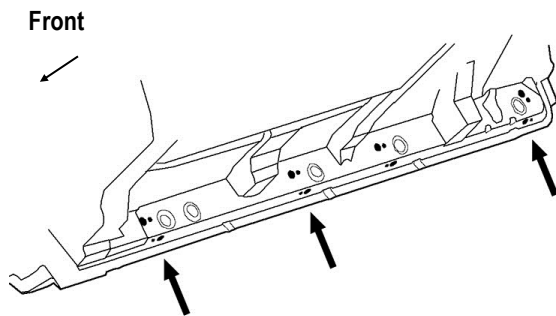
M8X1.25 Hex Nut

STEP 1

The instruction here is for your reference only. We strongly recommend the professional installer for best result. We are not responsible for any damage caused by the installation.

Start the installation from passenger side of the vehicle. Locate the passenger mounting locations along the bottom and inner side of the body panel, **(Fig 1)**.

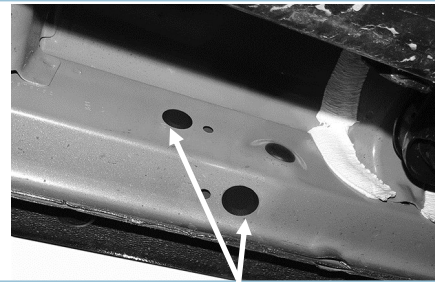
NOTE: It may help to hold a Bracket up in place to help determine the mounting holes to use along the bottom and inner side of the body.



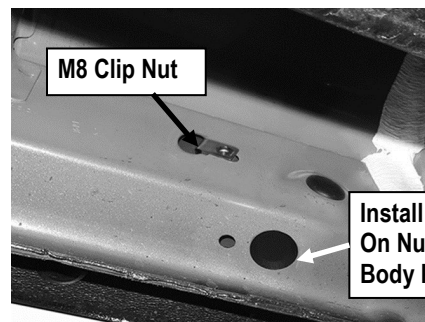
(Fig 1) Passenger Side Mounting Locations Along Bottom And Back Of Body Panel Illustrated

STEP 2

Remove rubber plugs as necessary from the holes in the side and bottom of the inner body panel, **(Fig 2)**. Select (1) M8 Clip Nut. Slide the M8 Clip Nut into the large hole and over the smaller hole next to it in the side of the body panel. Line up threaded nut on the M8 Clip Nut with smaller hole in body panel, **(Fig 3)**. Repeat to install a M8 Clip Nut in the bottom mounting location.



(Fig 2) Remove Plugs From Mounting Locations As Necessary



(Fig 3) Slide M8 Clip-On Nut Into Large Hole And Over Small Hole

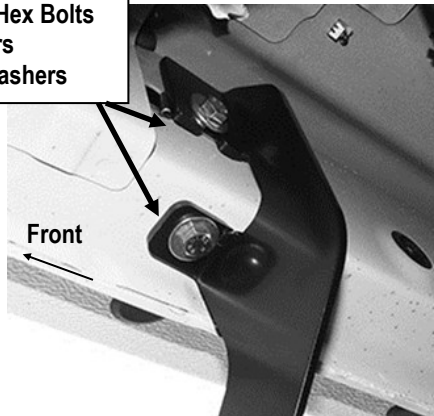
iArmor®

STEP 3

Select (1) Passenger Front Mounting Bracket (**PFM/PCM/DRM**). Attach the Bracket to the (2) M8 Clip Nuts with (2) M8X1.25-30mm Hex Bolts, (2) M8 Lock Washers and (2) M8 Large Flat Washers, (**Fig 4**). Snug but do not fully tighten the hardware.

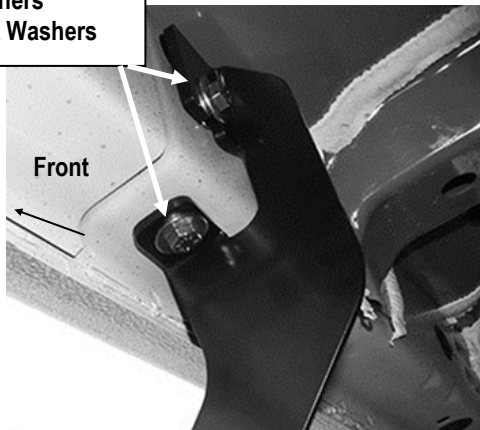
Repeat **Steps 2—4** to install Passenger Center Mounting Bracket (**PFM/PCM/DRM**) and Passenger Rear Mounting Bracket (**DFM /DCM/PRM**), (**Fig 5 & 6**).

(2) M8X1.25-30mm Hex Bolts
(2) M8 Lock Washers
(2) M8 Large Flat Washers



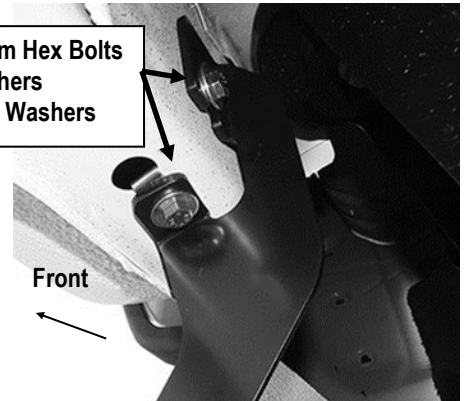
(Fig 4) Passenger Front Mounting Bracket (PFM/PCM/DRM) Installation

(2) M8X1.25-30mm Hex Bolts
(2) M8 Lock Washers
(2) M8 Large Flat Washers



(Fig 5) Passenger Center Mounting Bracket (PFM/PCM/DRM) Installation

(2) M8X1.25-30mm Hex Bolts
(2) M8 Lock Washers
(2) M8 Large Flat Washers



(Fig 6) Passenger Rear Mounting Bracket (DFM /DCM/PRM) Installation

STEP 4

Once all (3) passenger side mounting brackets are installed, select and attach the Passenger Side Step Bar onto the Mounting Brackets with (3) U Brackets, (6) Spacers, (3) M8X1.25-55mm Carriage Bolts, (3) M8 Large Flat Washers, (3) M8 Lock Washers and (3) M8X1.25 Hex Nuts. Do not fully tighten hardware at this time. (**Fig 7**)

STEP 5

Properly level and adjust the Step Bar and fully tighten all hardware.

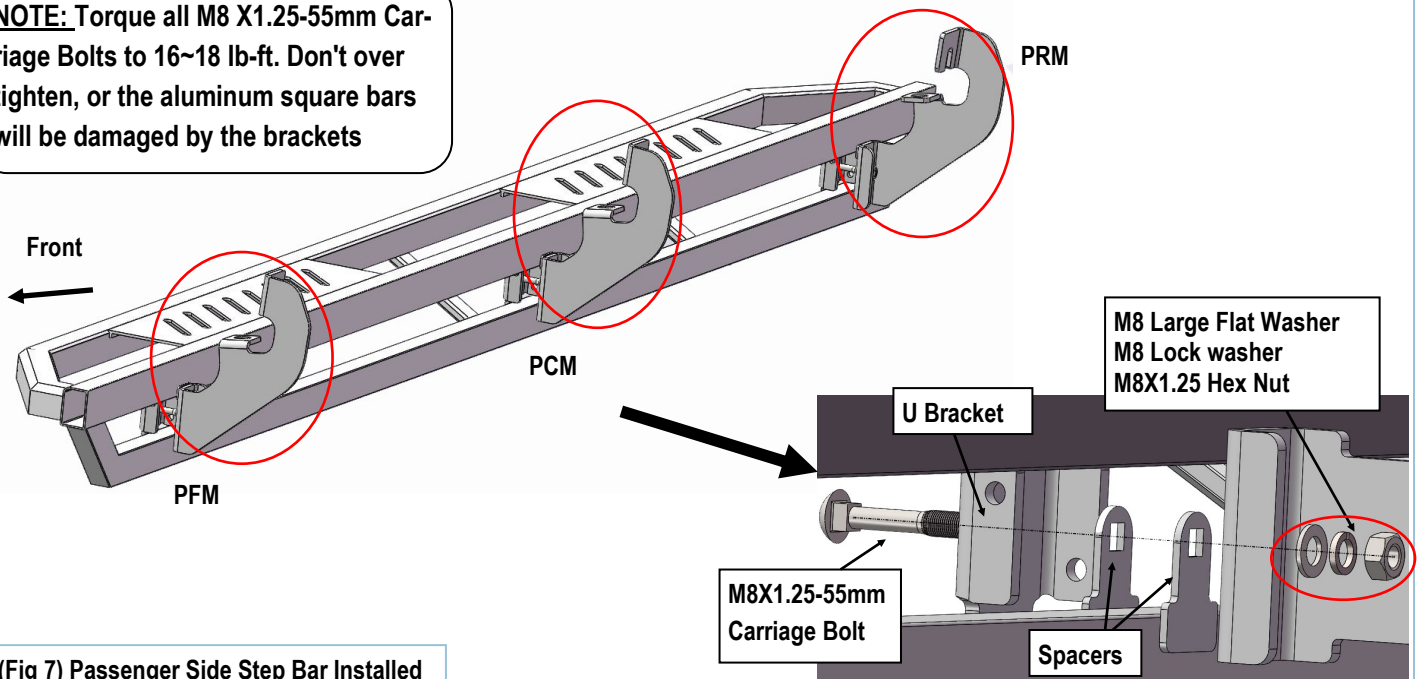
STEP 6

Move to the passenger side of the vehicle. Repeat **Steps 1-5** to install passenger side step bar.

Installation completed (**Fig 8**).

iArmor®

NOTE: Torque all M8 X1.25-55mm Carriage Bolts to 16~18 lb-ft. Don't over tighten, or the aluminum square bars will be damaged by the brackets



(Fig 7) Passenger Side Step Bar Installed



(Fig 8) Installation Completed

Attention

Do periodic inspections to the installation to make sure that all hardware is secure and tight.

In order to protect your bars/boards, please use only mild soap/non-abrasive products for cleaning.