

iArmor® by APS

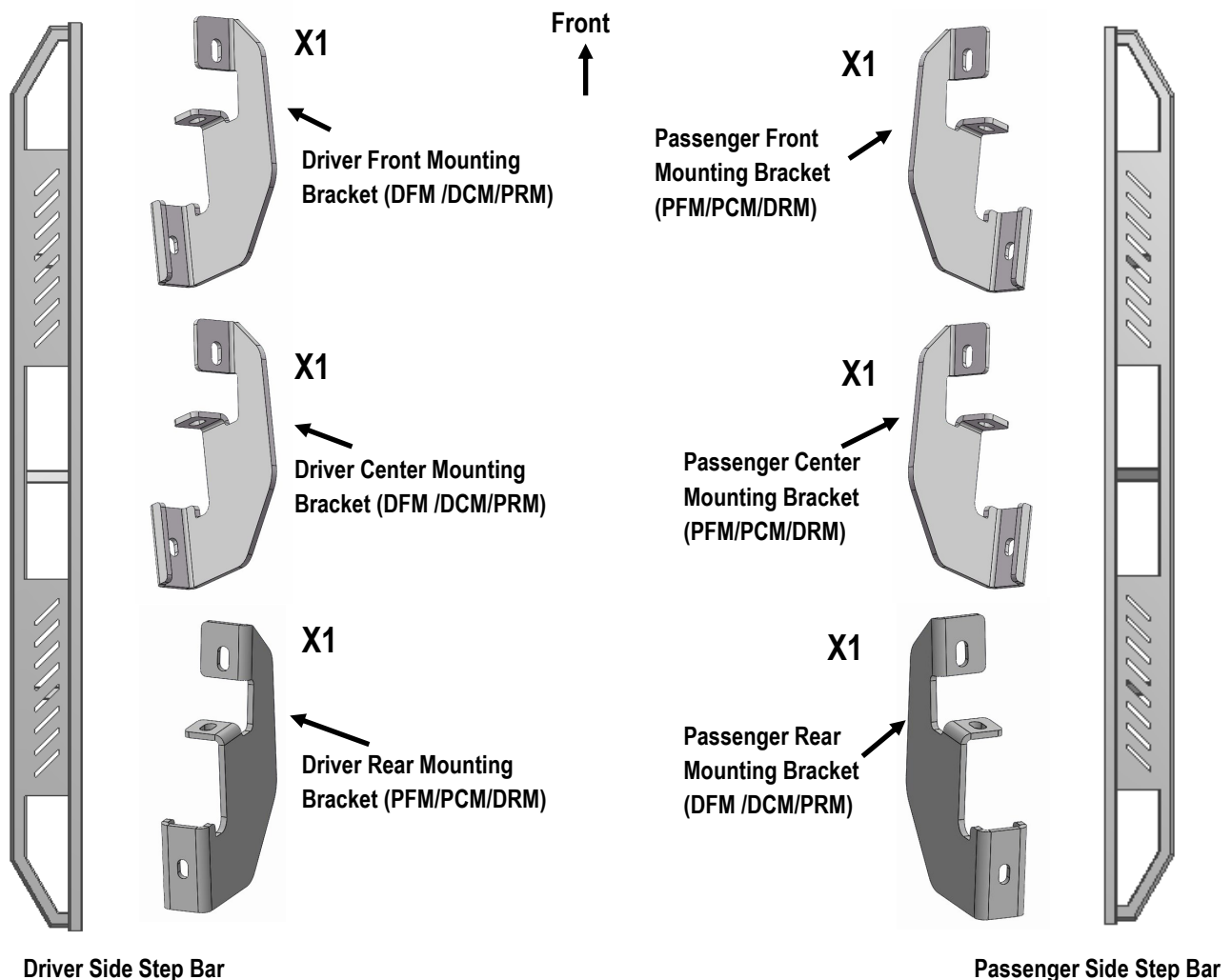
PART#: IA-S197

BEFORE INSTALLATION

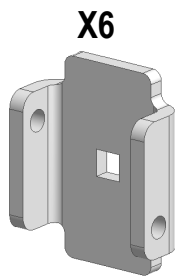
REMOVE CONTENTS FROM BOX. VERIFY ALL PARTS ARE PRESENT. READ INSTRUCTIONS CAREFULLY BEFORE STARTING INSTALLATION. ASSISTANCE IS RECOMMENDED. THANK YOU FOR CHOOSING OUR PRODUCT!

Fastener Size	Tightening Torque (ft-lbs)
6mm	6-7
8mm	16-18
10mm	31-32
12mm	56-58
14mm	92-94

PART LIST

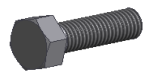


iArmor®



X6

U Bracket



X12

M8X1.25-30mm Hex Bolt



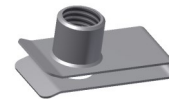
X18

M8 Large Flat Washer



X18

M8 Lock Washer



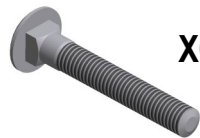
X12

M8 Clip Nut



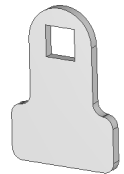
X6

M8X1.25 Hex Nut



X6

M8X1.25-55mm Carriage Bolt



X12

Spacer

The instruction here is for your reference only. We strongly recommend the professional installer for best result. We are not responsible for any damage caused by the installation.

STEP 1

If vehicle has plastic covers, remove the designated covers from the rocker panel where mounts will be placed (**Fig 1**).

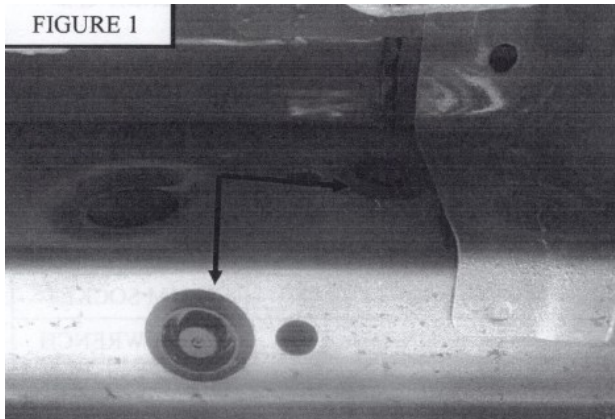


FIGURE 1

(Fig 1) Remove Rubber Covers

STEP 2

Install M8 Clip Nuts in the holes where the plastic covers were removed, (**Fig 2**).

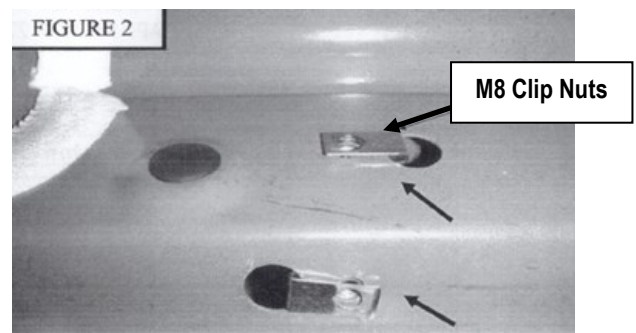


FIGURE 2

M8 Clip Nuts

(Fig 2) Install Supplied M8 Clip Nuts In Designated Areas.

STEP 3

Loosely install mounting brackets to the previously install M8 Clip Nuts with (2) M8X1.25-30mm Hex Bolts, (2) M8 Large Flat Washers, (2) M8 Lock Washers, (**Fig 3**). (**Note:** The middle bracket will be closer to the front bracket then in comparison to the rear bracket, see Fig 4 for orientation and direction of brackets.)

iArmor®

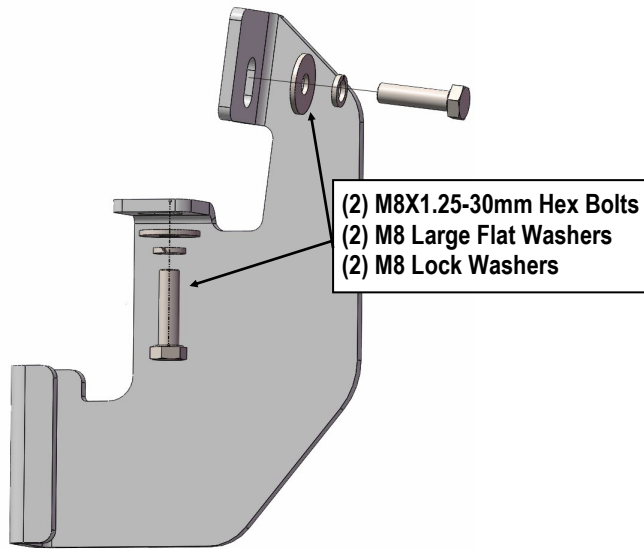
STEP 5

Properly level and adjust the Step Bar and fully tighten all hardware.

STEP 6

Move to the passenger side of the vehicle. Repeat **Steps 1-5** to install passenger side step bar.

Installation completed (**Fig 5**).

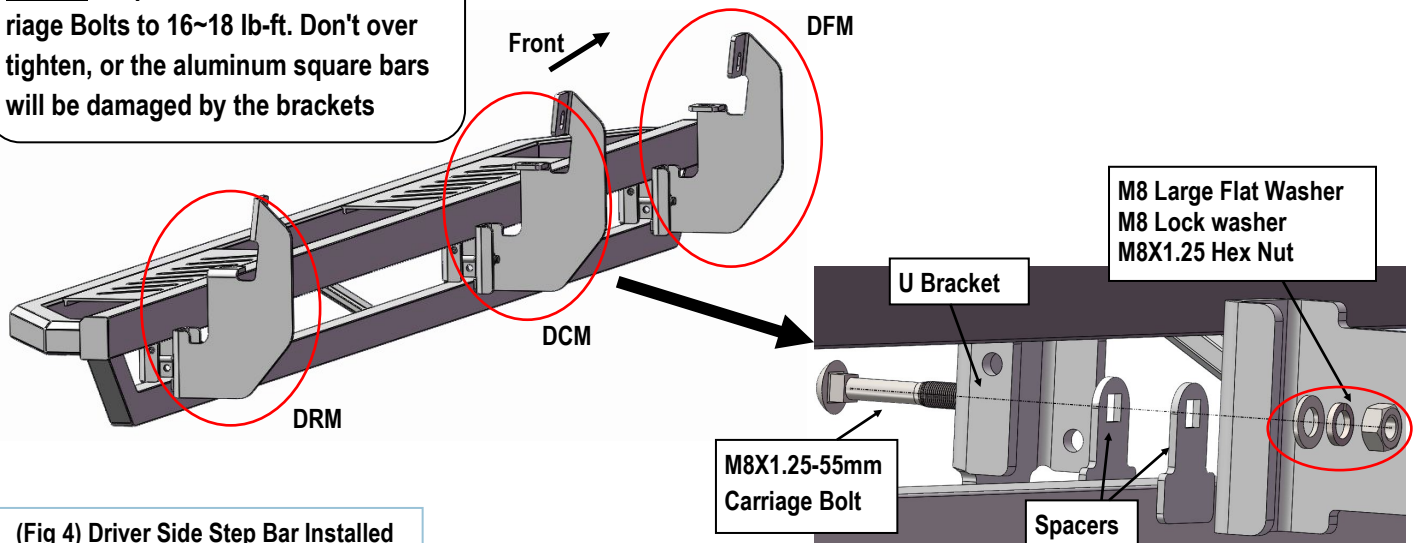


(Fig 3) Driver Front Mounting Bracket (DFM /DCM/PRM) Installation Pictured

STEP 4

Once all (3) driver side mounting brackets are installed, select and attach the Driver Side Step Bar onto the Mounting Brackets with (3) U Brackets, (6) Spacers, (3) M8X1.25-55mm Carriage Bolts, (3) M8 Large Flat Washers, (3) M8 Lock Washers and (3) M8X1.25 Hex Nuts (**Fig 4**). Do not fully tighten hardware at this time.

NOTE: Torque all M8 X1.25-55mm Carriage Bolts to 16~18 lb-ft. Don't over tighten, or the aluminum square bars will be damaged by the brackets



(Fig 4) Driver Side Step Bar Installed

iArmor®



(Fig 5) Installation Completed

Attention

Do periodic inspections to the installation to make sure that all hardware is secure and tight.

In order to protect your bars/boards, please use only mild soap/non-abrasive products for cleaning.