

# iArmor<sup>®</sup>

## iArmor<sup>®</sup> by APS

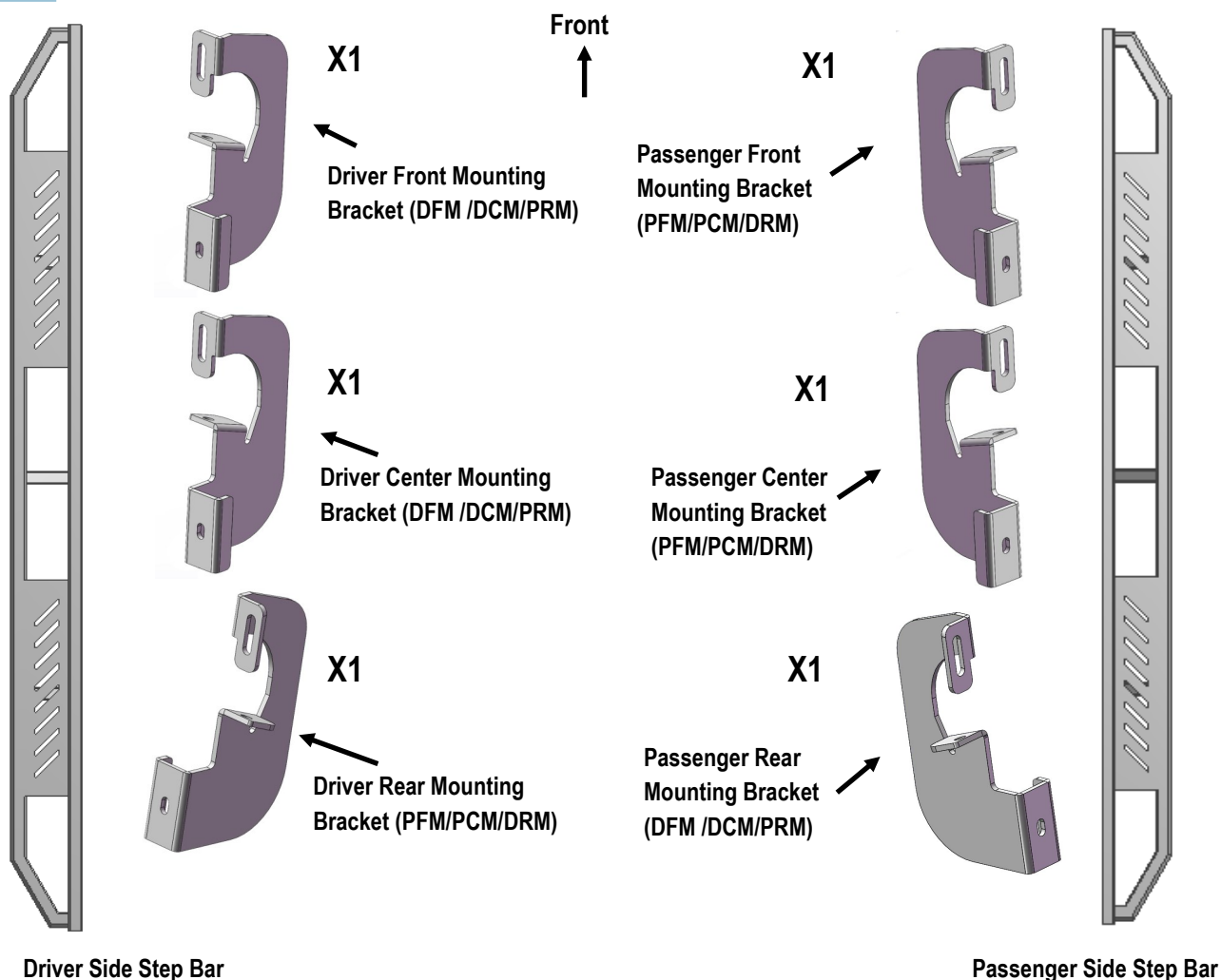
PART#: IA-S131

### BEFORE INSTALLATION

REMOVE CONTENTS FROM BOX. VERIFY ALL PARTS ARE PRESENT. READ INSTRUCTIONS CAREFULLY BEFORE STARTING INSTALLATION. ASSISTANCE IS RECOMMENDED. THANK YOU FOR CHOOSING OUR PRODUCT!

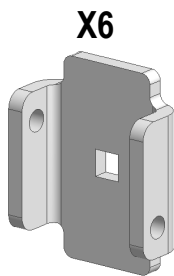
Fastener Size	Tightening Torque (ft-lbs)
6mm	6-7
8mm	16-18
10mm	31-32
12mm	56-58
14mm	92-94

### PART LIST

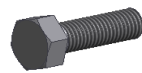


Customer Support: [info@iarmorauto.com](mailto:info@iarmorauto.com)

# iArmor®



U Bracket



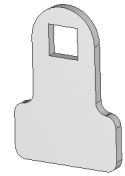
M8X1.25-20mm Hex Bolt



M8 Large Flat Washer



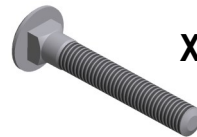
M8 Lock Washer



Spacer



M8X1.25 Hex Nut



M8X1.25-55mm Carriage Bolt

## STEP 2

The instruction here is for your reference only. We strongly recommend the professional installer for best result. We are not responsible for any damage caused by the installation.

Repeat **Step 1** to install the remaining Passenger Center and Rear Mounting Brackets. Don't fully tighten hardware at this time.

## STEP 1

Start the installation from Passenger side of the vehicle. Attach Passenger Front Mounting Bracket (**PFM/PCM/DRM**) as shown (**Fig 1**). Don't fully tighten hardware at this time.

**NOTE:** Passenger Front/ Center and Driver Rear Mounting Brackets are universal; Driver Front/ Center and Passenger Rear Mounting Brackets are universal.

### NOTE:

**04 and Older Vehicles** With Existing Thread Insert In Body Panel

**05-Up Vehicles** With Existing Stud On Front And Rear Mounting Locations

M8X1.25 Hex Nut  
M8 Lock Washer  
M8 Flat Washer

**For 05-UP Vehicles:**  
M8X1.25 Hex Nut  
M8 Lock Washer  
M8 Flat Washer

**For 04 and Older Vehicles:**  
M8X1.25-20mm Hex Bolt  
M8 Lock Washer  
M8 Flat Washer

M8X1.25-20mm Hex Bolt  
M8 Flat Washer

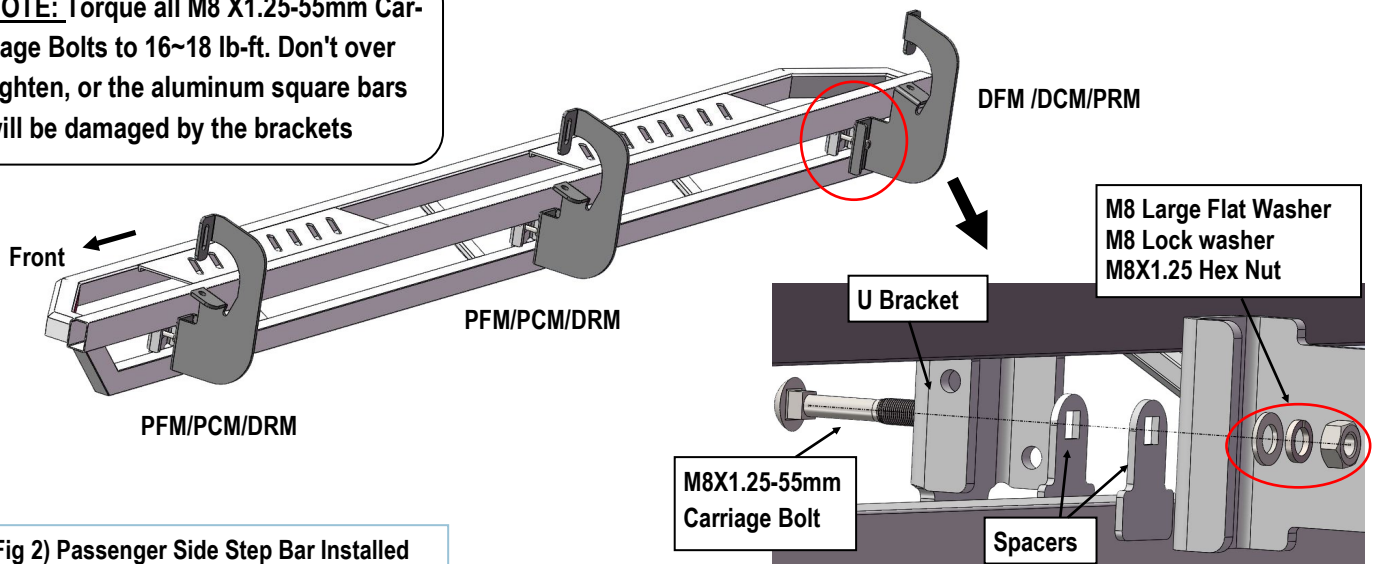
(Fig 1) Passenger Front Mounting Bracket (PFM/PCM/DRM) Installed

# iArmor®

## STEP 3

Once all (3) passenger side mounting brackets are installed, select and attach the Passenger Side Step Bar onto the Mounting Brackets with (3) U Brackets, (6) Spacers, (3) M8X1.25-55mm Carriage Bolts, (3) M8 Large Flat Washers, (3) M8 Lock Washers and (3) M8X1.25 Hex Nuts (**Fig 2**). Do not fully tighten hardware at this time.

**NOTE:** Torque all M8 X1.25-55mm Carriage Bolts to 16~18 lb-ft. Don't over tighten, or the aluminum square bars will be damaged by the brackets



(Fig 2) Passenger Side Step Bar Installed

## STEP 4

Properly level and adjust the Step Bar and fully tighten all hardware.

## STEP 5

Move to the driver side of the vehicle. Repeat **Steps 1-4** to install driver side step bar.

Installation completed (**Fig 3**).



(Fig 3) Installation Completed

### Attention

Do periodic inspections to the installation to make sure that all hardware is secure and tight.

In order to protect your bars/boards, please use only mild soap/non-abrasive products for cleaning.