

## IARMOR EDGE™

PART#: IA-N296

### BEFORE INSTALLATION

REMOVE CONTENTS FROM BOX. VERIFY ALL PARTS ARE PRESENT. READ INSTRUCTIONS CAREFULLY BEFORE STARTING INSTALLATION. ASSISTANCE IS RECOMMENDED. THANK YOU FOR CHOOSING OUR PRODUCT!

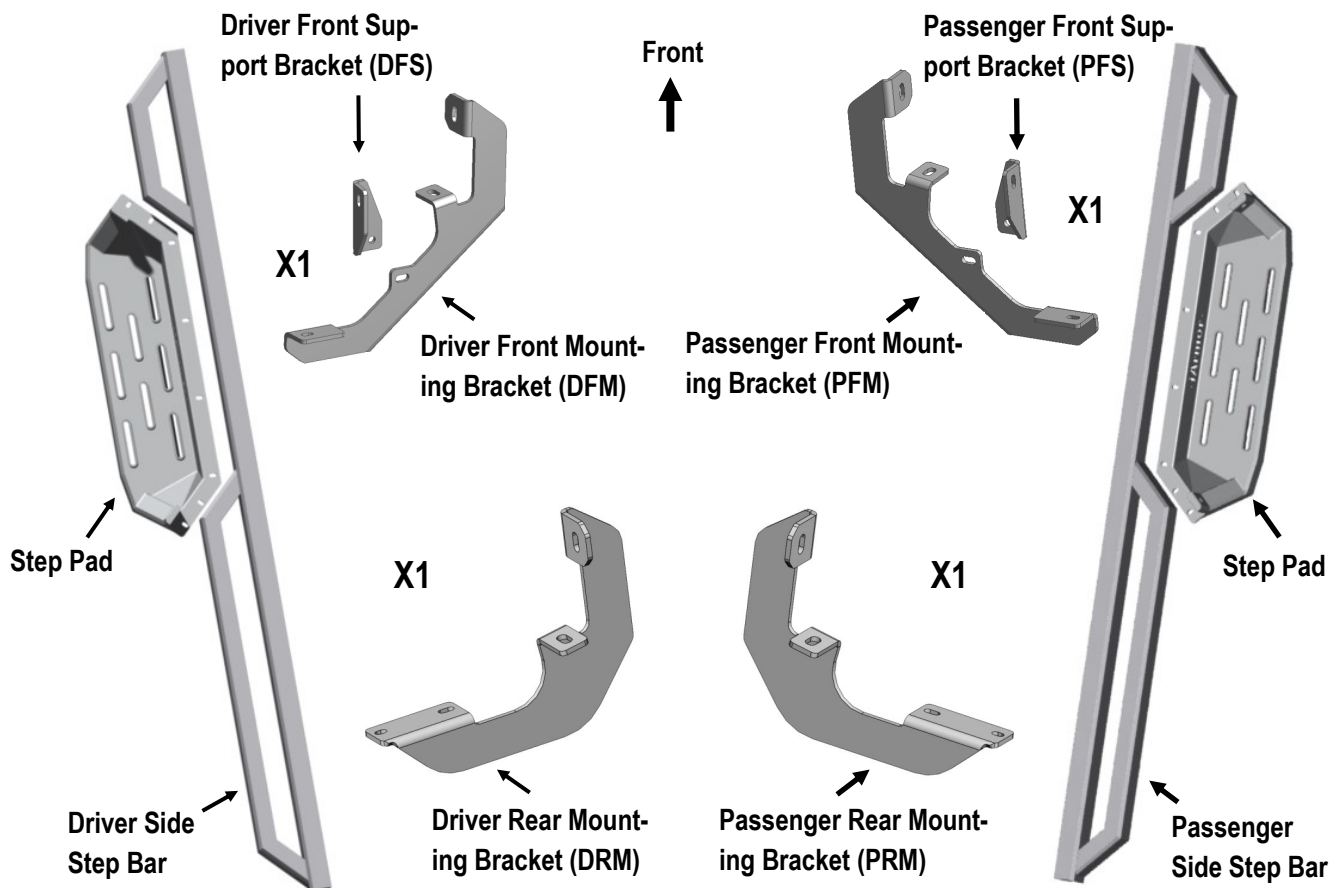
**\*DRILLING NOT REQUIRED**

**\*TRIMMING NOT REQUIRED**

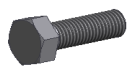
### Torque Value

Fastener Size	Tightening Torque (ft-lbs)
6mm	6-7
8mm	16-18
10mm	31-32
12mm	56-58
14mm	92-94

### PART LIST



# iArmor®



**X10**

M8X1.25-30 Hex Bolt



**X12**

M8 Flat Washer



**X8**

M8 Lock Washer



**X2**

M8X1.25 Nylon Lock Nut



**X4**

M6X1-20 Square Head Bolt



**X20**

M6X1-20 T-Bolt



**X24**

M6 Large Flat Washer



**X24**

M6X1 Nylon Lock Nut



**X4**

M6X1-20 Flat Sunk Head Bolt

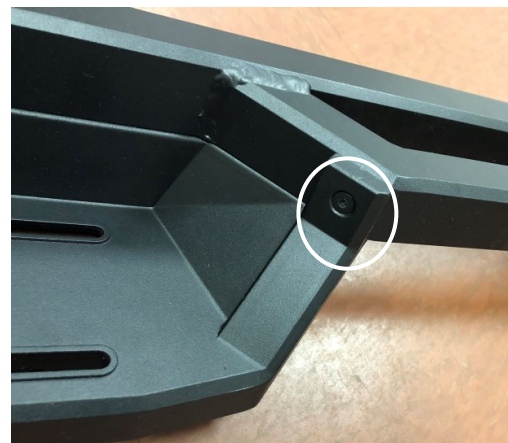
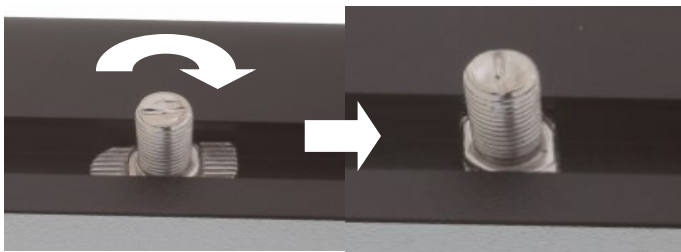
The instruction here is for your reference only. We strongly recommend the professional installer for best result. We are not responsible for any damage caused by the installation.

## STEP 1

Install the Step Pads onto the step bars with (16) M6x1-20 T-Bolts, (16) M6 Large Flat Washers, (16) M6X1Nylon Lock Nuts and (4) M6X1-20 Flat sunk head bolts.

**IMPORTANT:** Don't hit the step pad by any metal hammer within step pad installation, or the step pad will be damaged.

(8) M6X1-20 T-Bolts  
(8) M6 Large Flat Washers  
(8) M6 Nylon Lock Nuts



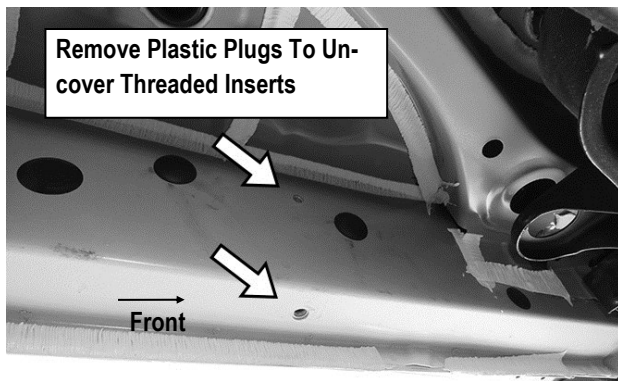
M6X1-20 Flat Sunk Head Bolt Location

## STEP 2

Start the installation under the Driver side of the vehicle. Locate the plastic plugs along the bottom edge of the body. Mounting Brackets will attach to the threaded mounting holes at the front and rear of the cab. Remove the plastic plugs from the Driver Side Front Mounting Location. Directly above each threaded insert is a top mounting location with a threaded insert on the side of the body panel, (**Fig 1**). Hold a bracket up in place to help determine the correct mounting holes to use along the body.

**NOTE:** Thread (1) M8X1.25-30 Hex Bolt into the threaded inserts to clear paint as required.

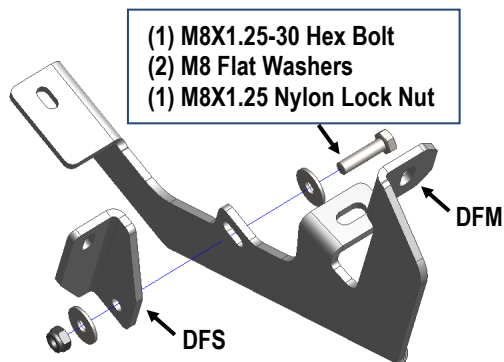
# iArmor®



(Fig 1) Driver Side Front Mounting Location

## STEP 3

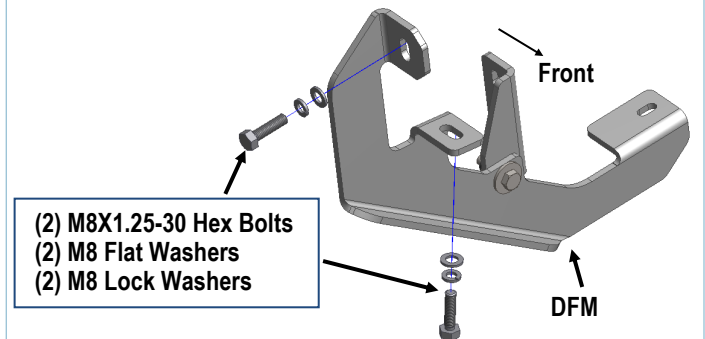
Assemble the Driver Front Mounting Bracket (DFM) and Driver Front Support Bracket (DFS) with (1) M8X1.25-30 Hex Bolt, (2) M8 Flat Washers and (1) M8X1.25 Nylon Lock Nut, (Fig 2).



(Fig 2) Driver Front Mounting Bracket Assembly

## STEP 4

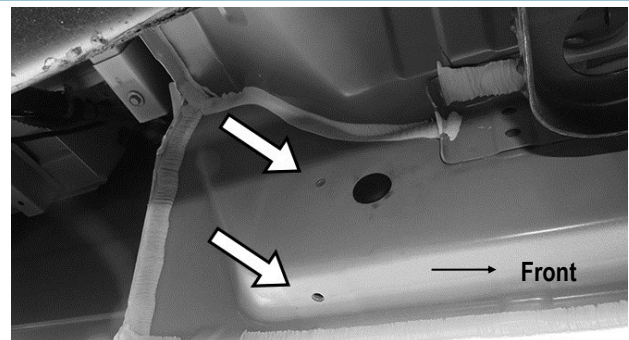
Attach the Assembled Driver Front Mounting Bracket to the factory threaded holes with (2) M8X1.25-30 Hex Bolts, (2) M8 Lock Washers and (2) M8 Flat Washers, (Fig 3). Do not fully tighten hardware.



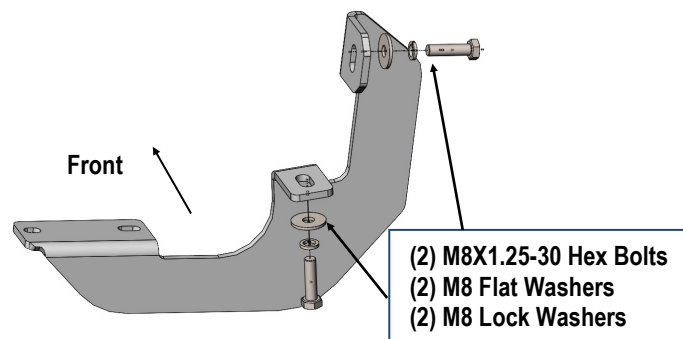
(Fig 3) Driver Front Mounting Bracket Installed

## STEP 5

Move to the Driver Side Rear Mounting location, (Fig 4). Repeat **Step 4** to attach (1) Driver Rear Mounting Bracket (DRM) to the rocker panel, (Fig 5)



(Fig 4) Driver Side Rear Mounting Location

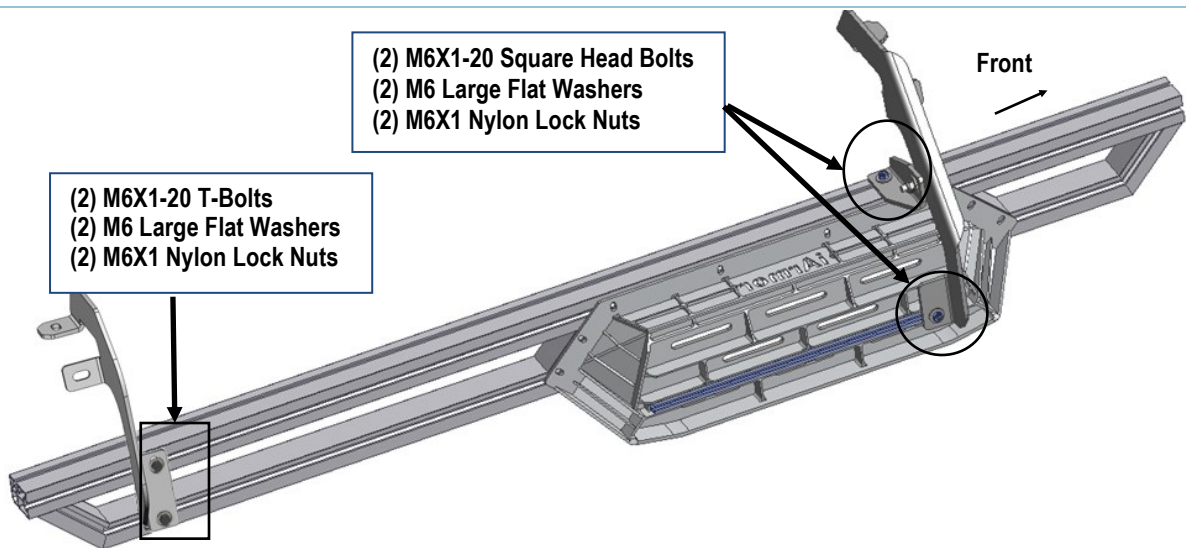


(Fig 5) Driver Rear Mounting Bracket Installed

# iArmor®

## STEP 6

Once all (2) Brackets have been installed, attach the Assembled Driver Side Step Bar to the Mounting Brackets with (2) M6X1-20 T-Bolts, (2) M6X1-20 Square Head Bolts, (4) M6 Large Flat Washers and (4) M6X1 Nylon Lock Nuts, (**Fig 6**). Do not fully tighten hardware at this time.



(Fig 6) Driver Side step Bar Installed

## STEP 7

Properly level and adjust the Step Bar and fully tighten all hardware.

## STEP 8

Move to the passenger side of the vehicle. Repeat **Steps 2-7** to install passenger side step bar.

### Attention

Do periodic inspections to the installation to make sure that all hardware is secure and tight.

In order to protect your bars/boards, please use only mild soap/non-abrasive products for cleaning.