

IARMOR EDGE™

PART#: IA-N295

BEFORE INSTALLATION

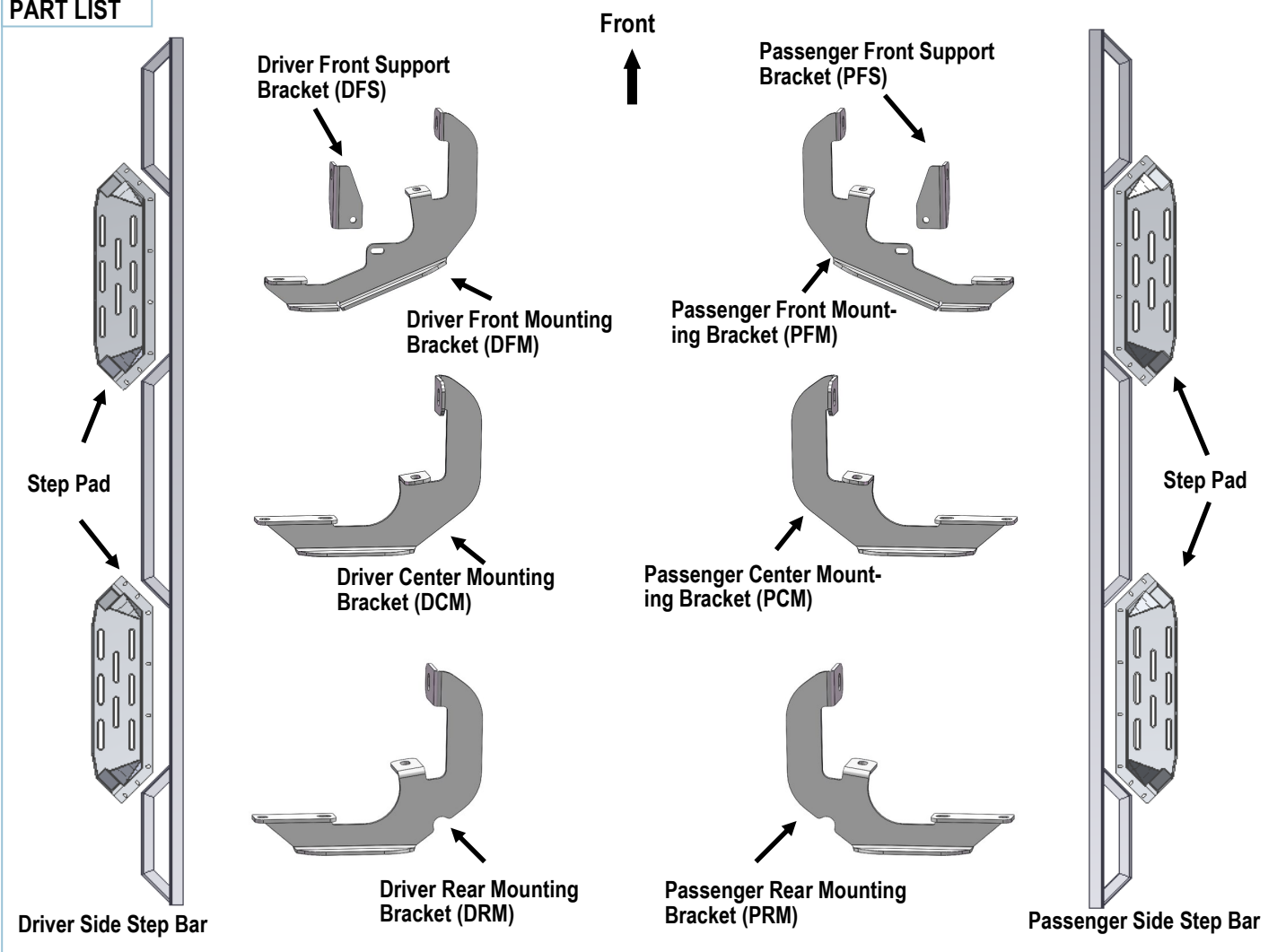
REMOVE CONTENTS FROM BOX. VERIFY ALL PARTS ARE PRESENT. READ INSTRUCTIONS CAREFULLY BEFORE STARTING INSTALLATION. ASSISTANCE IS RECOMMENDED. THANK YOU FOR CHOOSING OUR PRODUCT!

***DRILLING NOT REQUIRED**

***TRIMMING NOT REQUIRED**

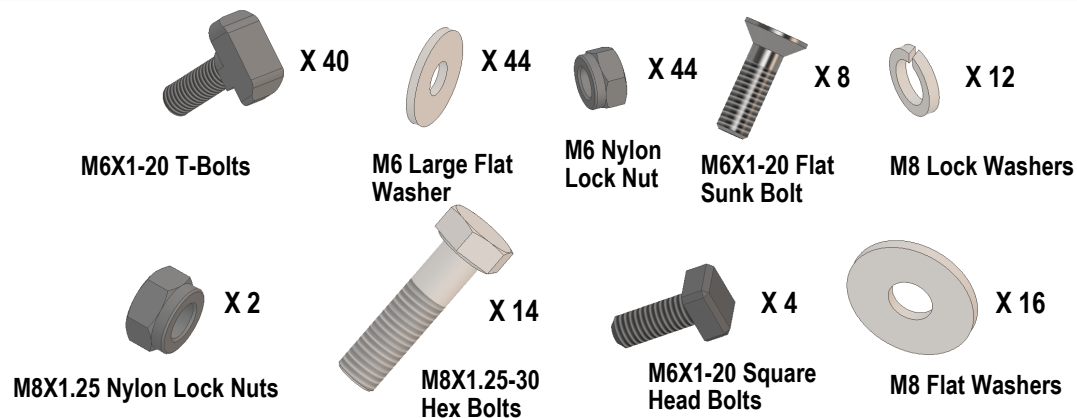
Fastener Size	Tightening Torque (ft-lbs)
6mm	6-7
8mm	16-18
10mm	31-32
12mm	56-58
14mm	92-94

PART LIST



Customer Support: info@iarmorauto.com

iArmor®

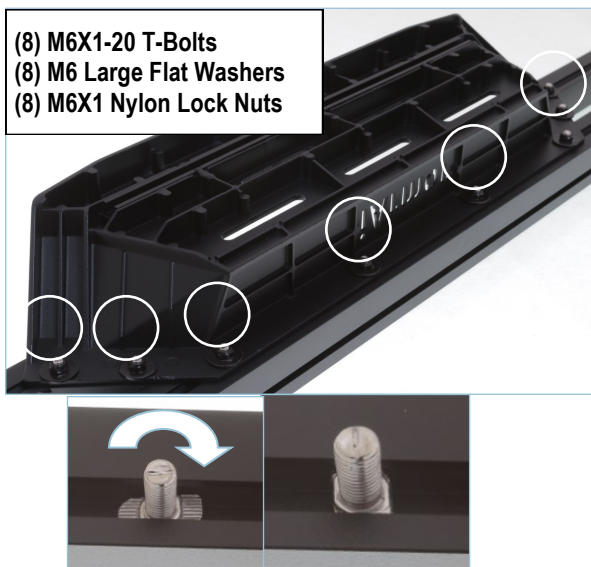


The instruction here is for your reference only. We strongly recommend the professional installer for best result. We are not responsible for any damage caused by the installation.

STEP 1

Install the Step Pads onto the step bars with (32) M6X1-20 T-Bolts, (32) M6 Large Flat Washers, (32) M6X1 Nylon Lock Nuts and (8) M6X1-20 Flat Sunk Head Bolts.

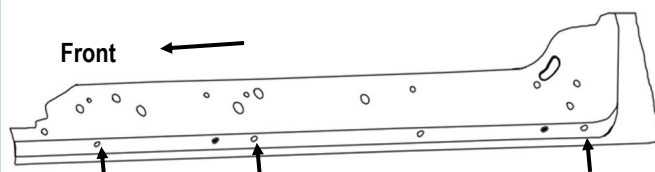
IMPORTANT: Don't hit the step pad by any metal hammer within step pad installation, or the step pad will be damaged.



(2) M6X1-20 Flat Sunk Head Bolts

STEP 2

Start the installation under the passenger/right side of the vehicle. Locate the 6 plugs along the bottom edge of the body. Mounting Brackets will bolt to the 1st, 3rd and 6th threaded mounting holes, (Fig 1).



(Fig 1) Passenger Side Rocker Panel Mounting Locations Illustrated (arrows)

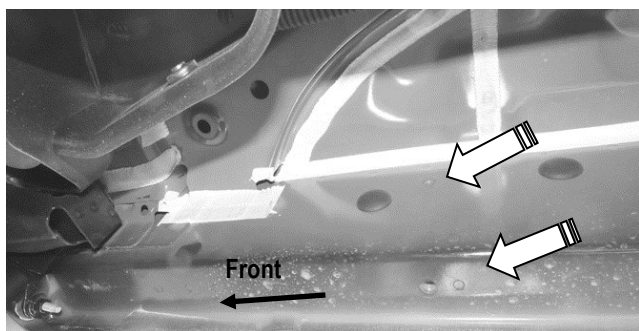
Customer Support: info@iarmorauto.com

iArmor®

STEP 3

Remove the plastic plugs from each mounting location. Directly above each threaded insert is a top mounting location on the side of the body panel, **(Fig 2)**. Hold a Bracket up in place to help determine the correct mounting holes to use along the body.

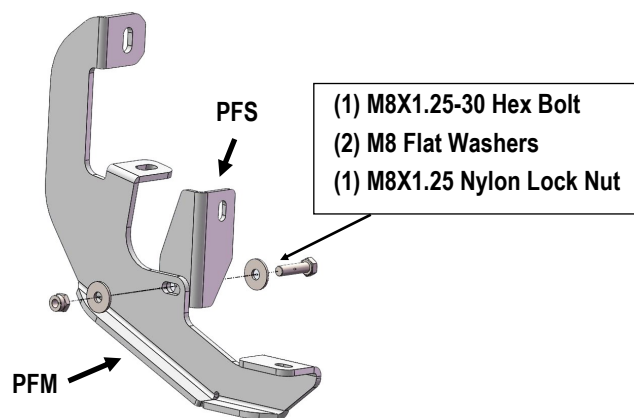
NOTE: Thread an 8mm Hex Bolt into the threaded inserts to clear paint from hole as required.



(Fig 2) Passenger Side Front Mounting Location

STEP 4

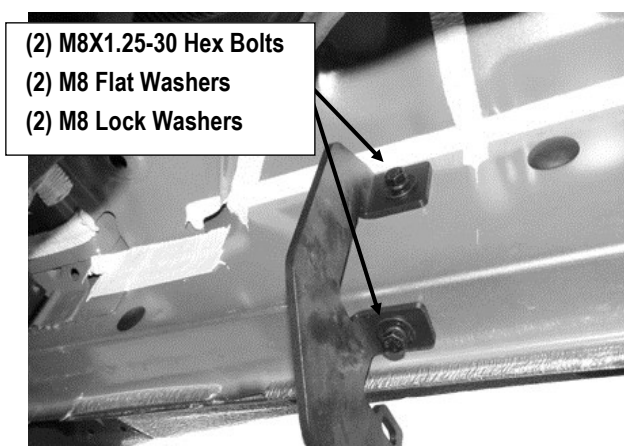
Select (1) Passenger Front Mounting Bracket (**PFM**) and (1) Passenger Front Support Bracket (**PFS**). Attached the Support Bracket onto Mounting Bracket with (1) M8X1.25-30 Hex Bolts, (2) M8 Flat Washer and (1) M8X1.25 Nylon Lock Nut.



(Fig 3) Passenger Front Mounting Bracket Assembly

STEP 5

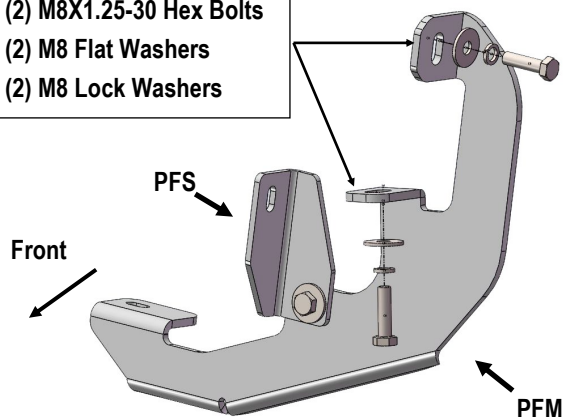
Bolt the Assembled Passenger Front Mounting Bracket to the factory threaded holes with (2) M8X1.25-30 Hex Bolts, (2) M8 Lock Washers and (2) M8 Flat Washers, **(Fig 4A & 4B)**. Do not tighten hardware at this time.



(Fig 4A) Passenger Front Mounting Bracket Installed

iArmor®

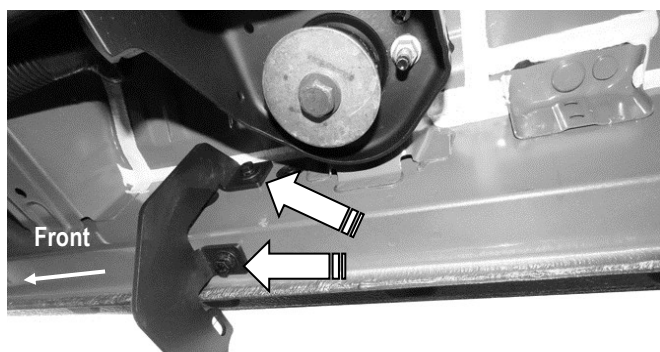
- (2) M8X1.25-30 Hex Bolts
- (2) M8 Flat Washers
- (2) M8 Lock Washers



(Fig 4B) Passenger Front Mounting Bracket Installed

STEP 6

Attach the Passenger Center Mounting Bracket (**PCM**) on the Passenger Side Center Mounting Location with (2) M8X1.25-30 Hex Bolts, (2) M8 Lock Washers and (2) M8 Flat Washers, (**Fig 5**). Do not fully tighten hardware at this time.

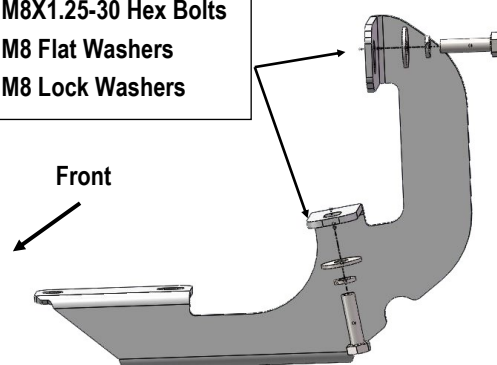


(Fig 5) Passenger Center Mounting Bracket Installed

STEP 7

Install the Passenger Rear Mounting Bracket (**PRM**) on the location 6th on vehicle (**Fig 6**). Do not fully tighten hardware at this time.

- (2) M8X1.25-30 Hex Bolts
- (2) M8 Flat Washers
- (2) M8 Lock Washers



(Fig 7) Passenger Rear Mounting Bracket Installed

STEP 8

Once all (3) Brackets have been installed, attach the Assembled Passenger Side Step Bar to the Brackets using (4) M6X1-20 T-Bolts, (2) M6X1-20 Square Head Bolts (6) M6 Large Flat Washers and (6) M6X1 Nylon Lock Nuts, (**Fig 8**). Do not fully tighten hardware at this time.

STEP 9

Level and adjust the Step Bar as necessary and fully tighten all hardware.

Customer Support: info@iarmorauto.com

iArmor®

STEP 10

Repeat **Steps 2—9** for Driver/left side running board installation.

STEP 11

Do periodic inspections to the installation to make sure that all hardware is secure and tight.

Attention

In order to protect your bars/boards, please use only mild soap/non-abrasive products for cleaning.

(Fig 8) Passenger Side Step Bar Installed

